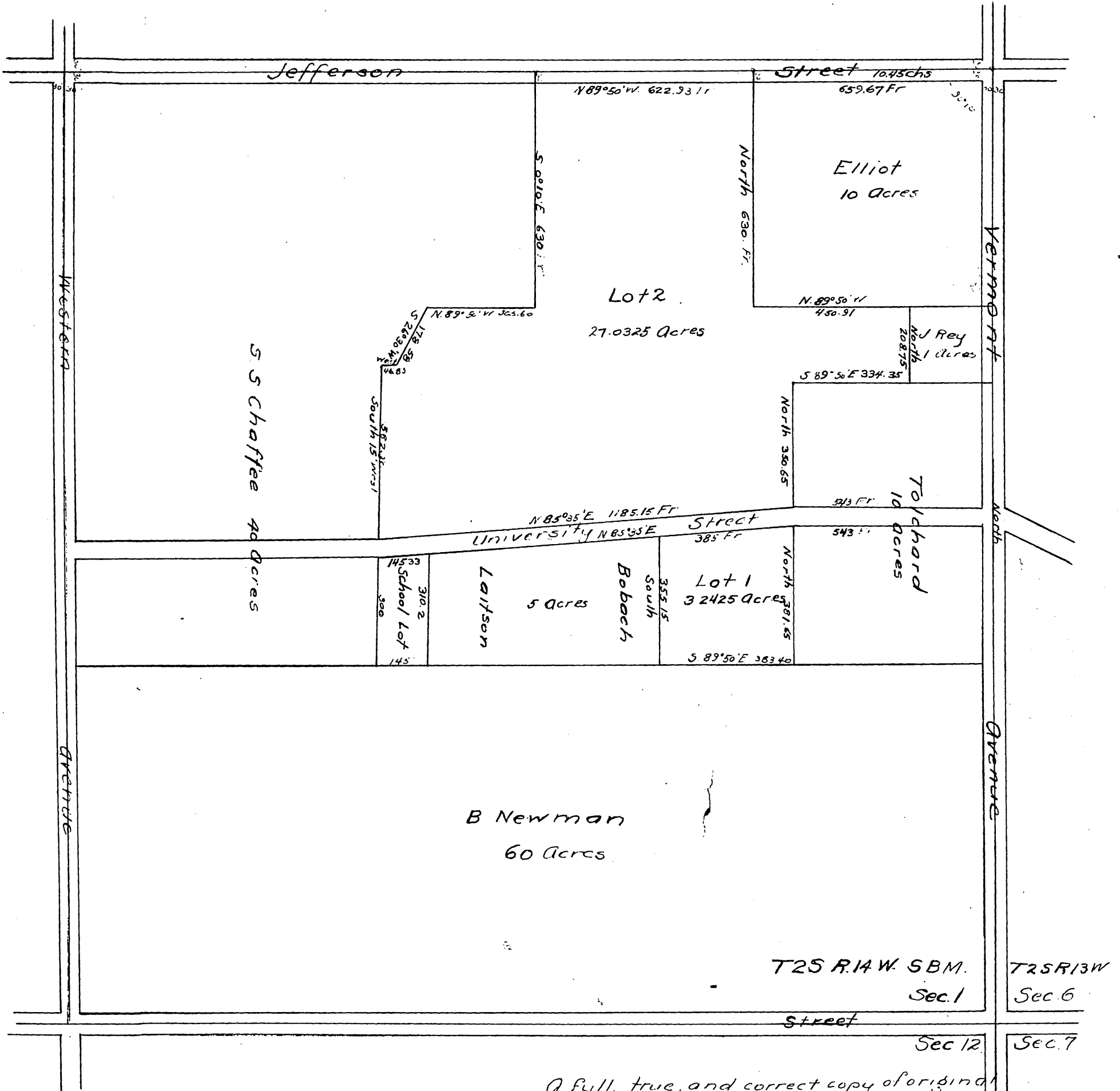




Plat showing that certain  
Tract of Land belonging to  
**THE ESTATE OF MARY NEWMAN**  
situated in the S.E. 1/4 of Section 1, T.  
2S. R. 14 W S B.M, designated as lots  
1 and 2 upon said plat.

Surveyed in March 1892  
by J. D. Bernal



A full, true, and correct copy of original  
(scale reduced to 300 feet to one inch)  
recorded Mar. 12 1892 at 36m in post 2 P. 177  
at request of S. M. White

J. O. Kelly County Recorder  
By W. W. Mello Deputy