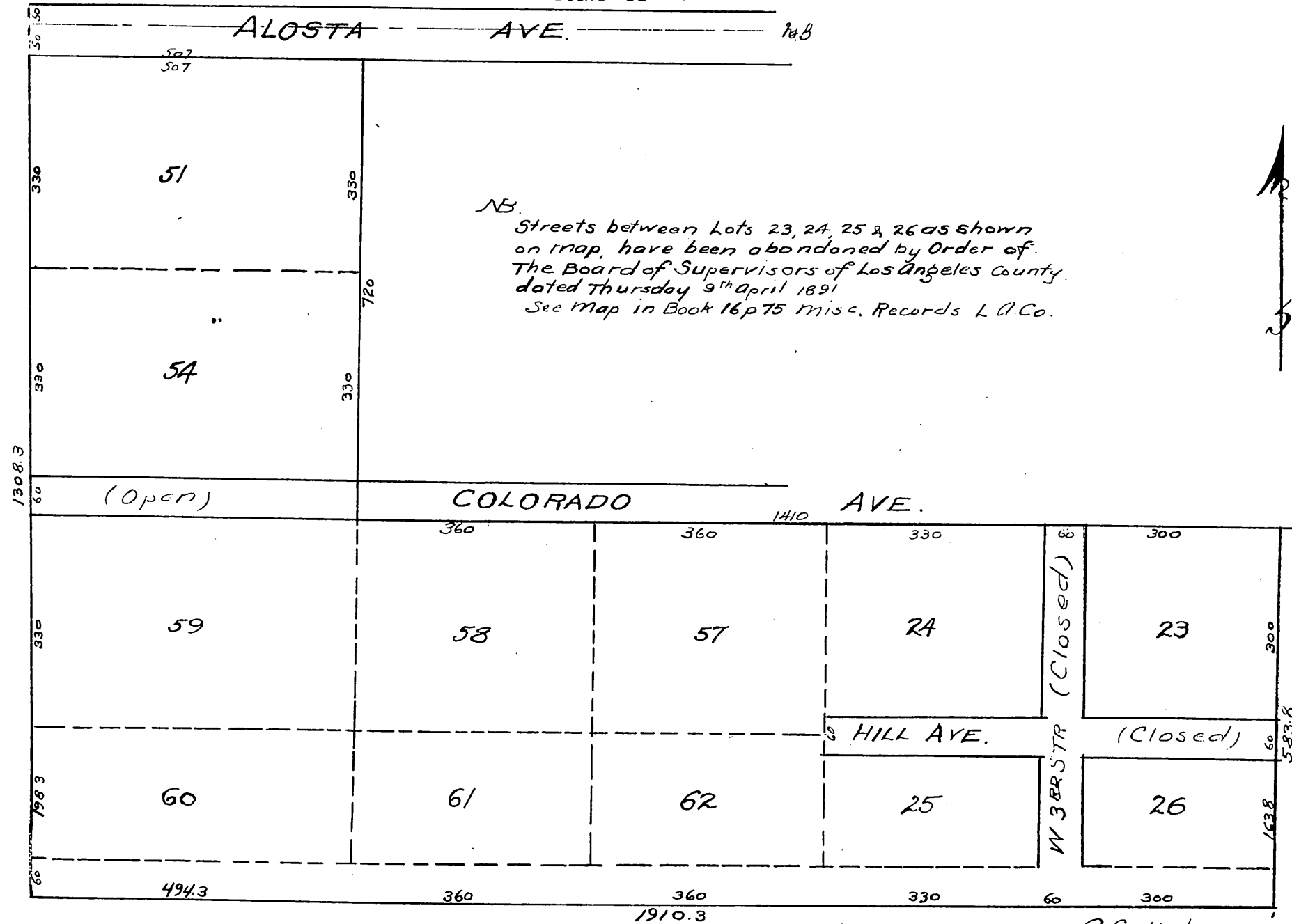


RE-PLAT

of Lots 23 to 26, 51, 54 & 57 to 62 inclusive, of
LE MARS' ADDITION
to Alosta

Scale 200ft. = 1in.



A full, true and correct copy of original recorded Mar 19, 1892 at 9 min past 11 am at request of J. P. and Wm F. Hanes
J. A. Kelly County Recorder
By W. W. Mills Deputy