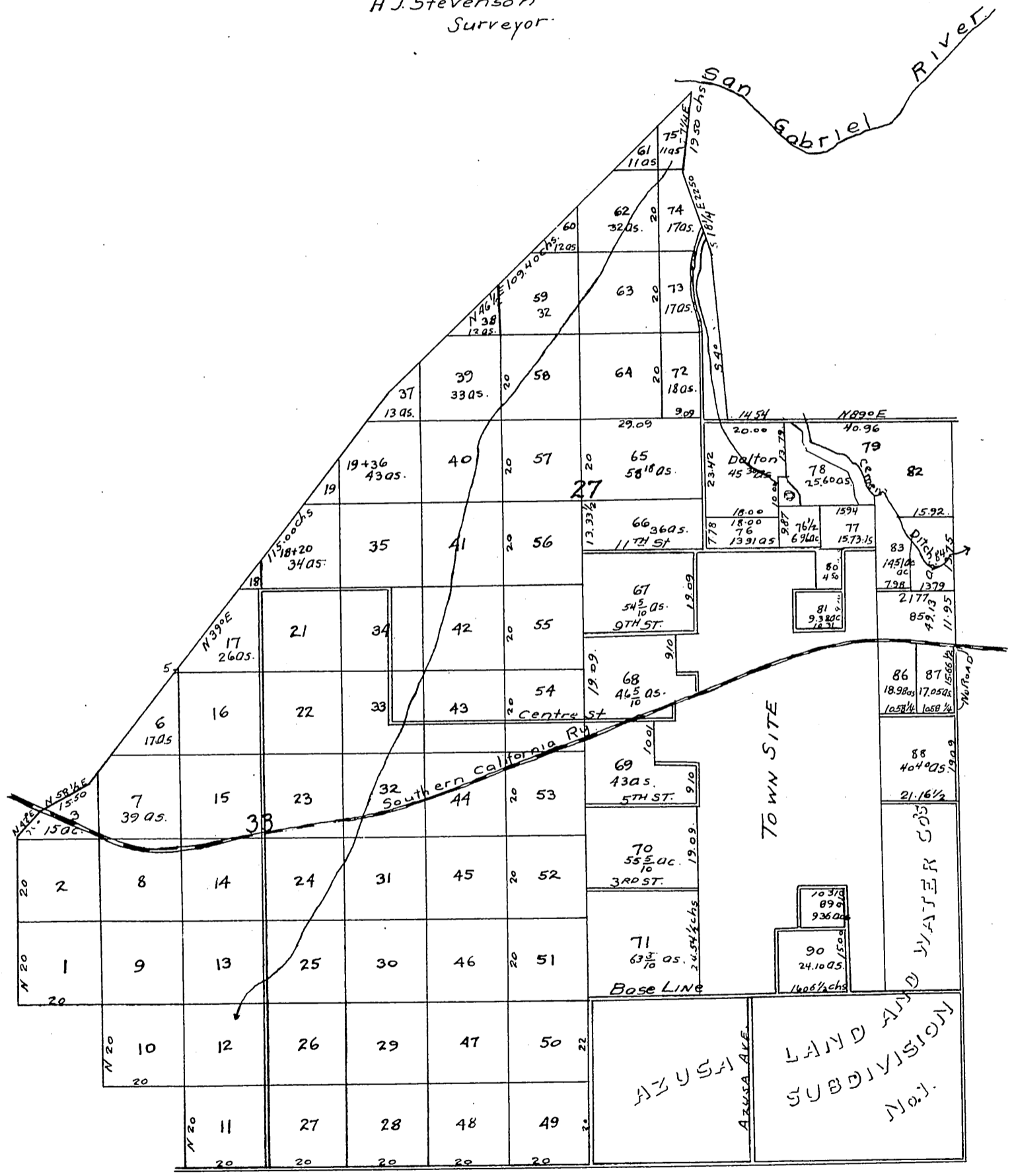


MAP OF  
SUBDIVISION NO 2  
Azusa  
Land and Water  
Co.  
Los Angeles Co. Cal.

1892  
Scale 20 chs = 1 Inch.  
H.J. Stevenson  
Surveyor.



A full, true, and correct copy of original  
scale reduced to 30 chains to one inch,  
recorded Mar 24 1892 at 44 min past 2 PM  
at request of Azusa Land & Water Co  
J. A Kelly County Recorder  
By W. W. Mills Deputy