



# Miller and Herrioll's Addition

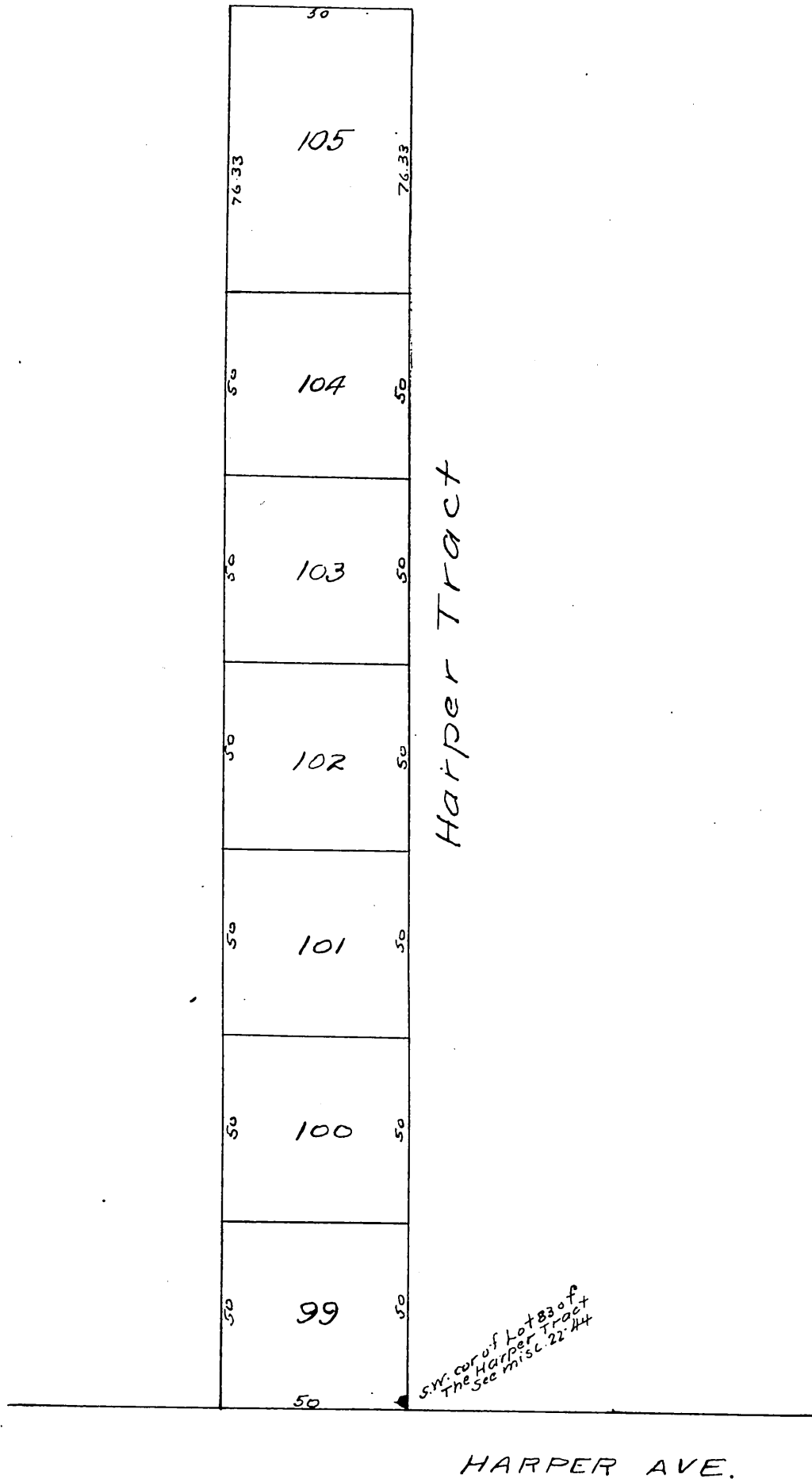
98

TO THE

## HARPER TRACT:

Being a subdivision of the East 50 feet of a tract of land deeded by Milton Lindley, by deed recorded in Book 75 page 370, office of Los Angeles Co Recorder, California

Scale 40' = 1"



A full true and correct copy of original recorded Apr 2 1892 at 35 min past 9 a.m. at request of Los Angeles Abstract Co. J. A. Kelly County Recorder By W. N. Mills Deputy.