

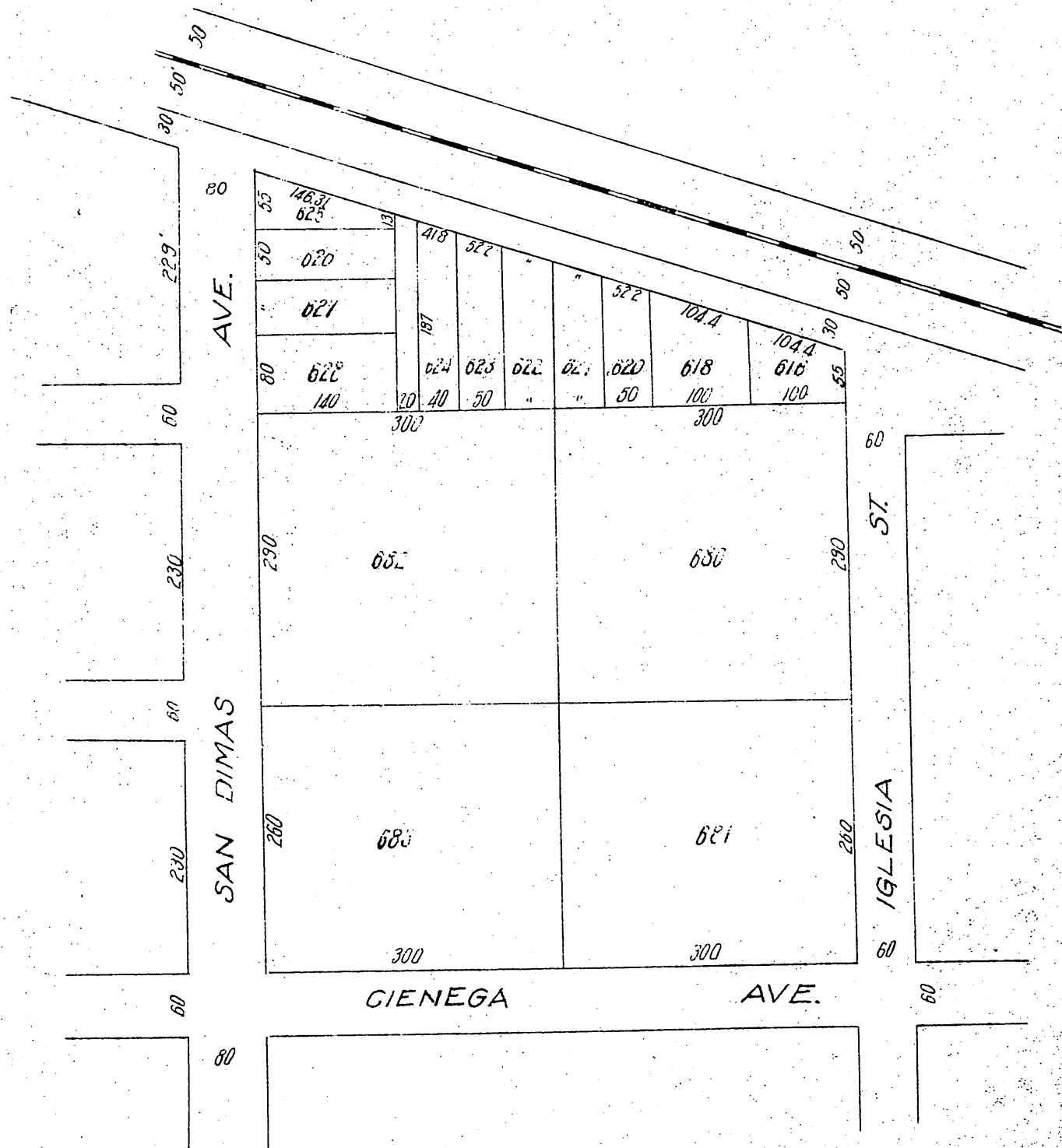
MAP

—OF PART OF THE—

TOWN OF SAN DIMAS,

after vacation of part of Commercial St. by order of the Board of Supervisors Dec. 28, 1891.

Scale 150' to 1"



Recorded at request of J. G. Millard Feb 23, 1892.

Handwritten notes and signatures in the bottom right corner, including the word "COMP" and some illegible initials.