

MAP

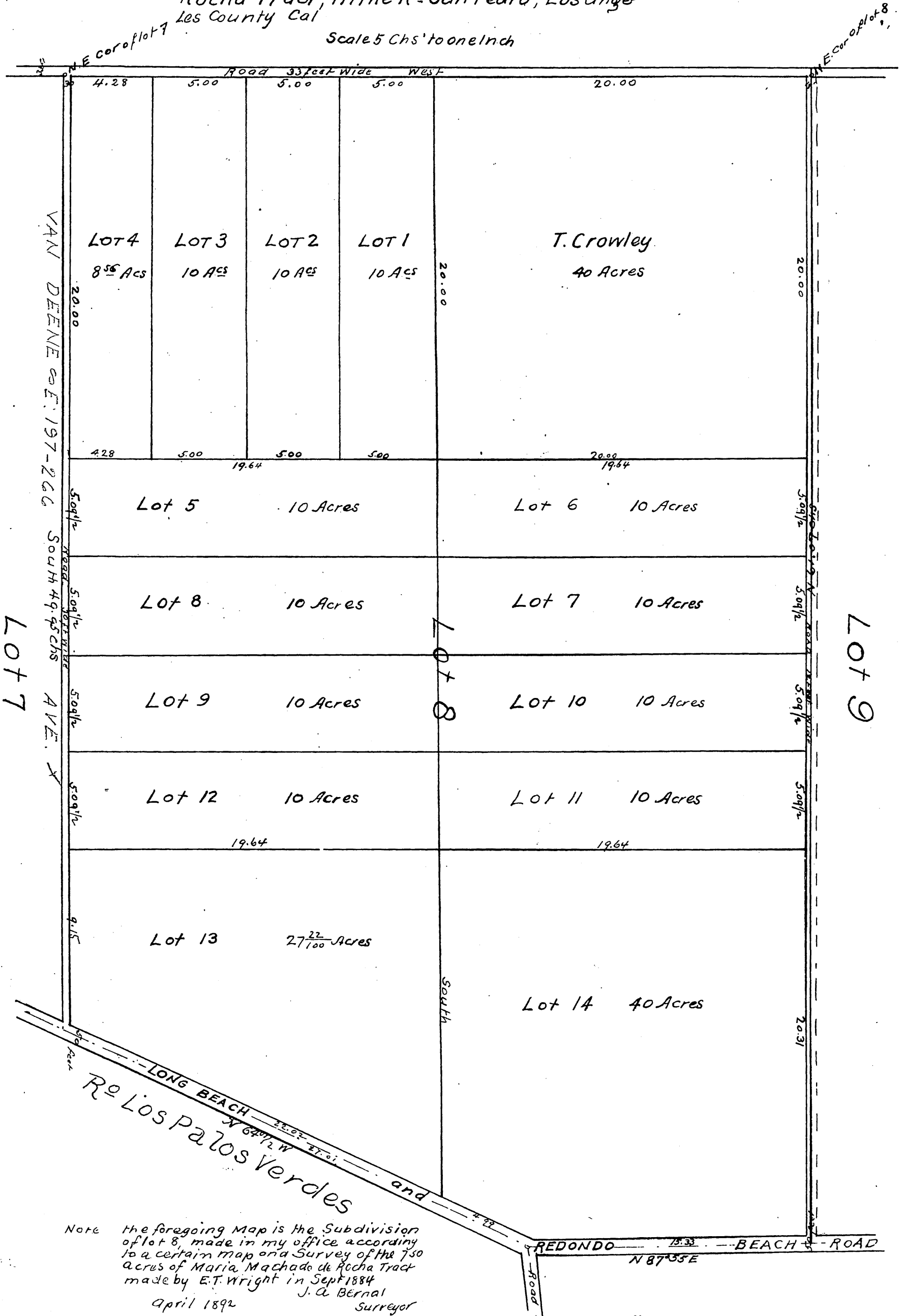
OF

E. N. McDonald's Subdivision

3

of Lot 8 of the 750 acres Maria Machado de Rocha Tract, in the R^o San Pedro, Los Angeles County Cal

Scale 5 Chs' to one Inch



Note the foregoing Map is the Subdivision of lot 8, made in my office according to a certain Map or a Survey of the 750 Acres of Maria Machado de Rocha Tract made by E.T. Wright in Sept 1884 made by E.T. Wright in Sept 1884
 J. A. Bernal
 April 1892
 Surveyor

A full true and correct copy of original recorded Apr 21, 1892 at 32 min past 2 p.m. at request of Bank of San Pedro
 J. A. Kelly County Records
 by W. W. Miller Deputy