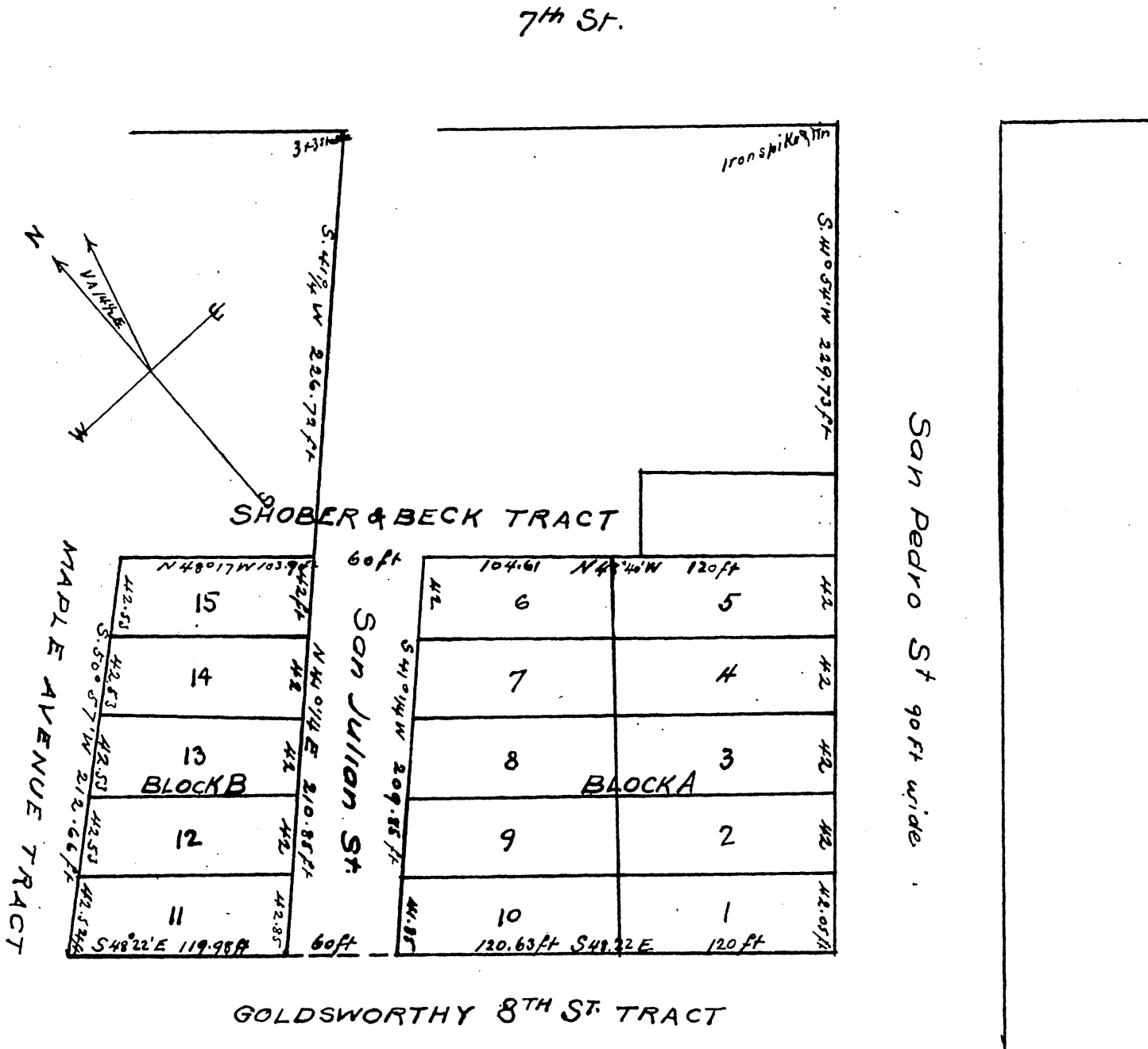


# Map of the WALSH ESTATE TRACT

Situated on San Pedro and San Julian  
Streets between 7<sup>th</sup> and 8<sup>th</sup> Streets in  
the City of Los Angeles Cal  
Surveyed Sept 3<sup>rd</sup> 1891 by John Goldsworthy  
Dep U.S. Surveyor

True Courses  $V. 14\frac{1}{2} E$  Scale 40 ft.



A full, true and correct copy of original  
(scale reduced to 80 feet, to one inch)  
recorded May 6 1892 at 36 min past 11 am  
at request of J. A. Baskerville  
J. A. Kelly County Recorder  
By W. W. Mills Deputy