

MAP OF EAST SAN PEDRO

Being a portion of Rancho San Pedro in Los Angeles County, Calif

SCALE 200 FEET TO 1 INCH

Surveyed subdivided and platted for LOS ANGELES TERMINAL LAND COMPANY May 1892 by J. C. Mc Clellan C.E.

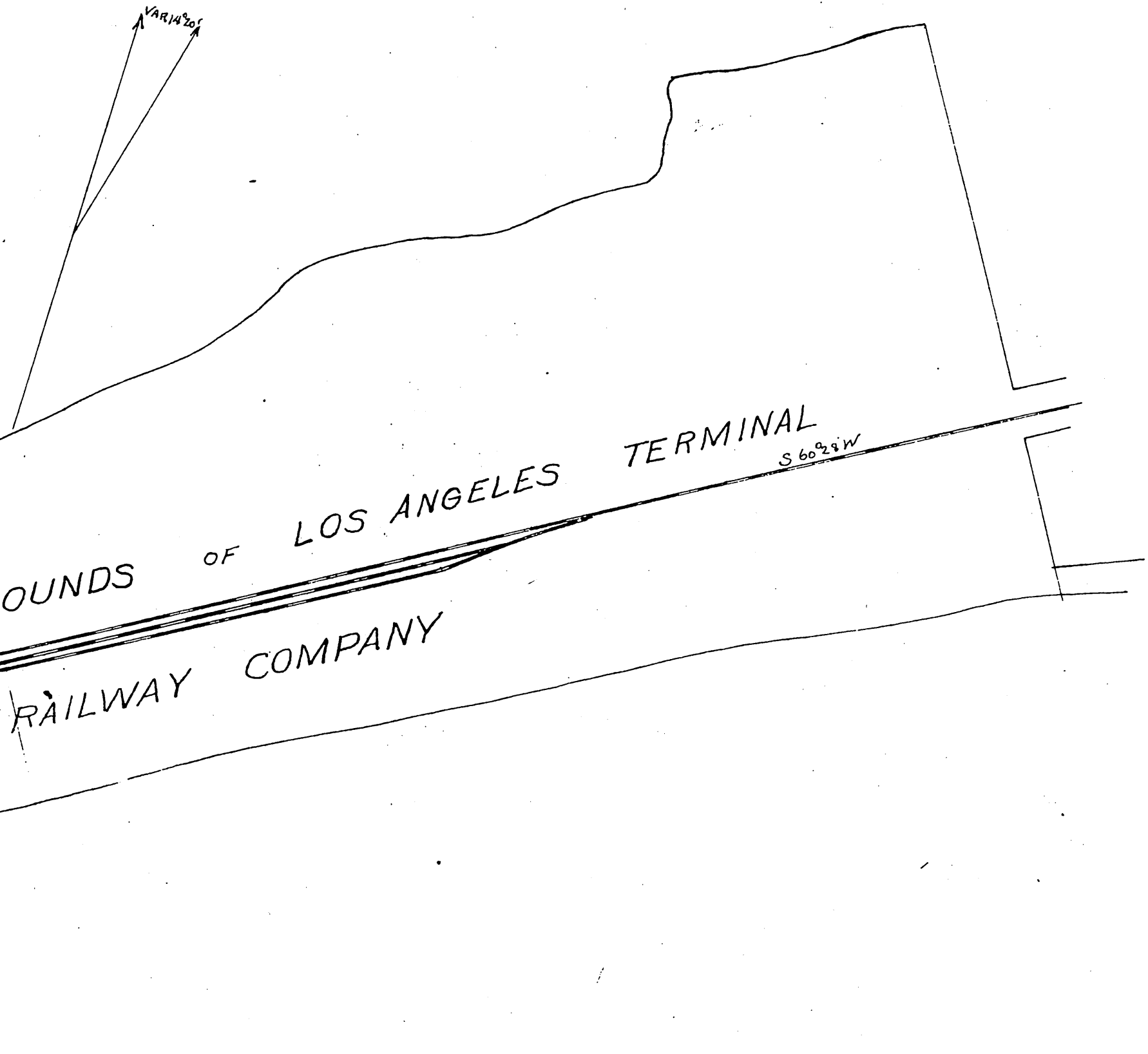
VARIATION

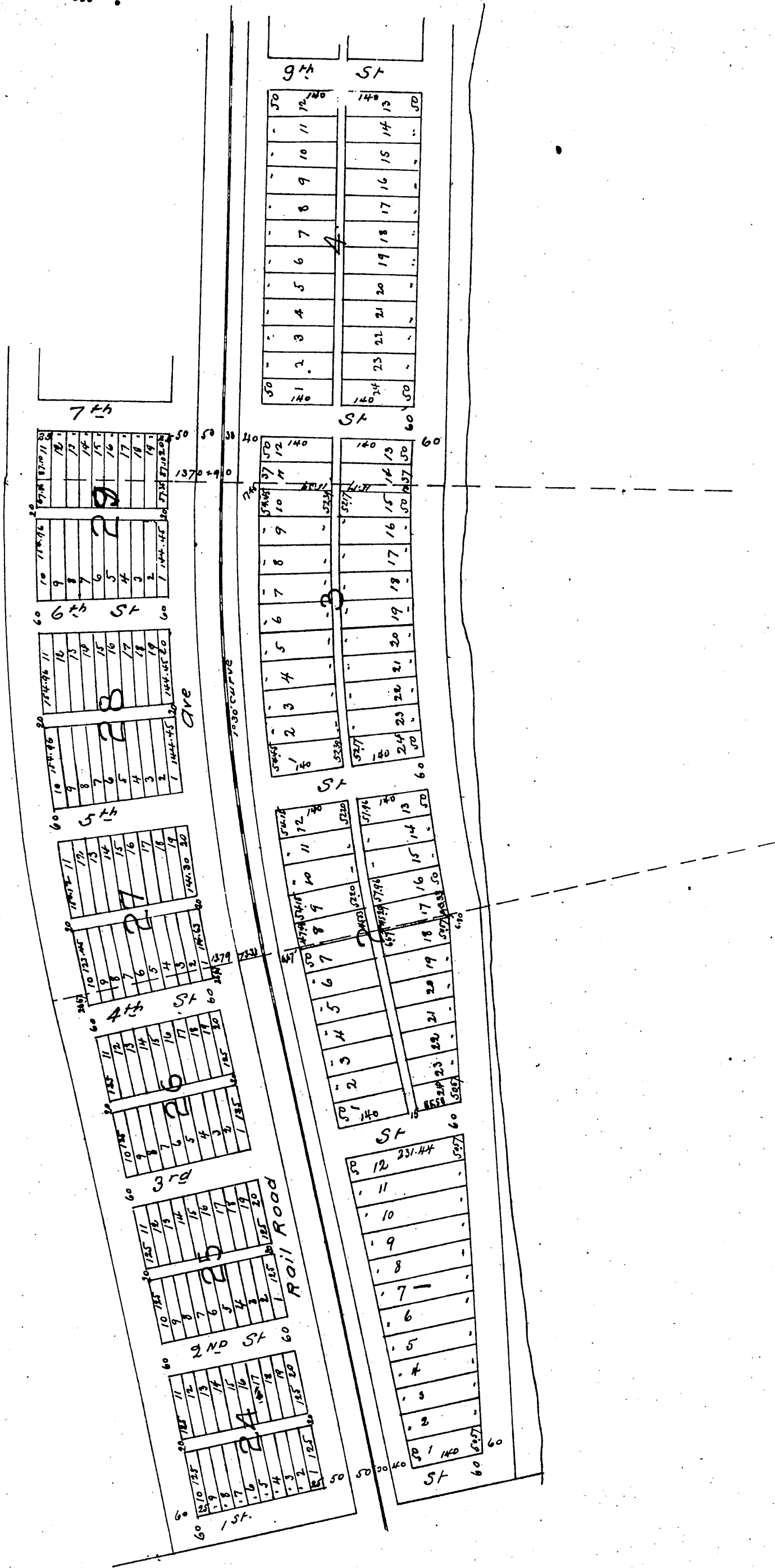
STATION GROUNDS OF LOS ANGELES RAILWAY COMPANY TERMINAL

S 60° 29' W

TURN TABLE

Government Breakers for

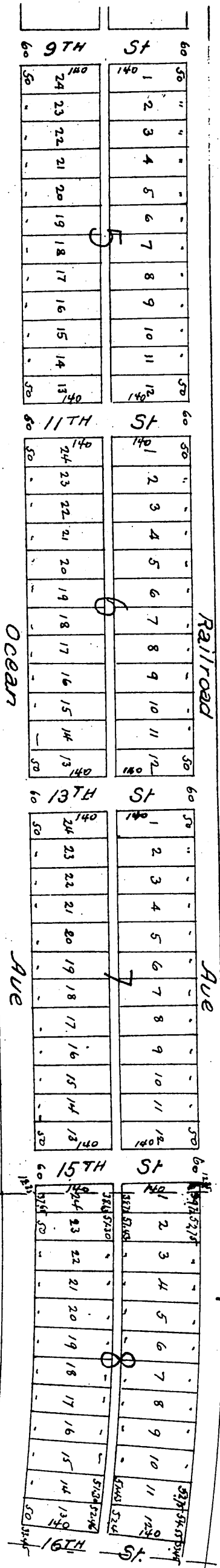




50' 50' 50' 50' 50'

PACIFIC

High Tide line



1322+90

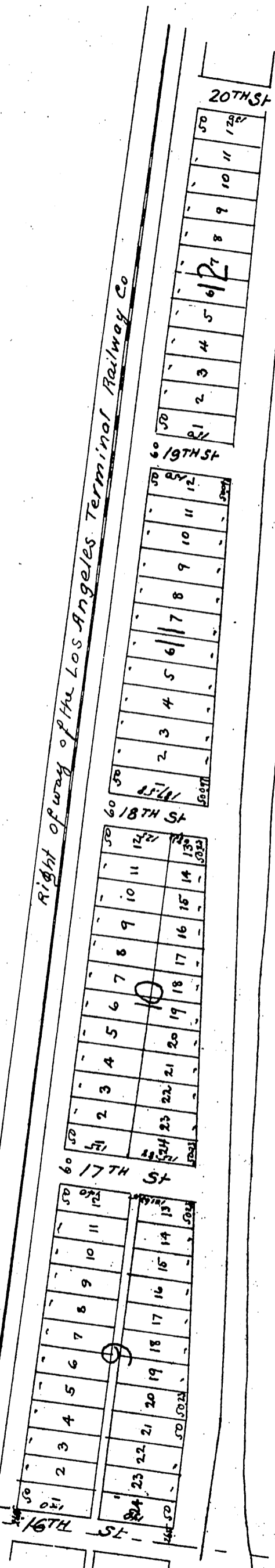
10 CARVE

1326+26.66

Radius to center of Track 5739.6 ft

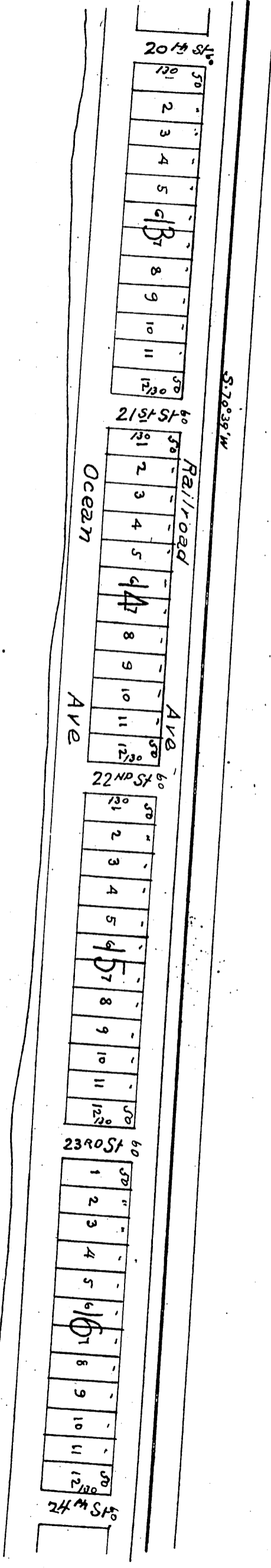
NOTE: Stations B and C with which connections are made as shown on this map are stations of Leconte's Survey commonly known as Town of Wilmington and officially entitled Map of the Rancho of New San Pedro showing the proposed subdivision. Surveyed and drawn by Frank Leconteur Oct 21st 1862. Filed with the report of the referees Oct 31st 1862 in Case No 877 District Court of First Judicial District State of California.

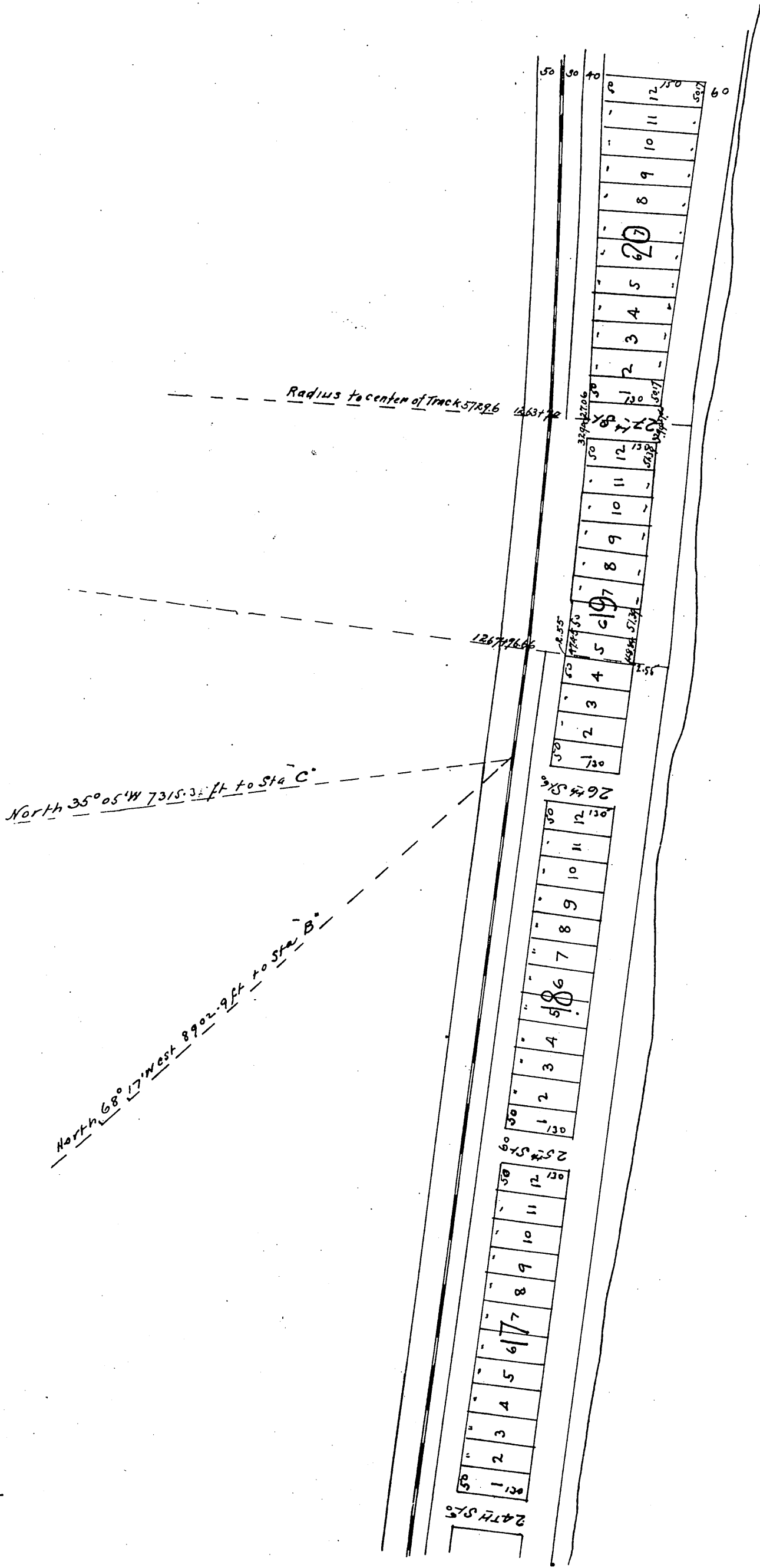
North 13° 54' East 841.95 ft to Sta C
 North 20° 26' West 588.26 ft to Sta B



O C B A IV

1000





A full true and correct copy of original
 recorded May 19 1892 at 56 min past 10 am
 at request of L.A. J. Land Co
 J.A. Kelly County Recorder
 By W. W. Mills Deputy