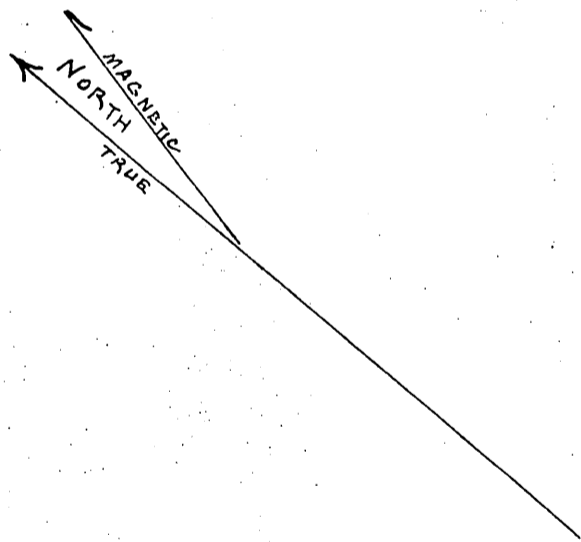
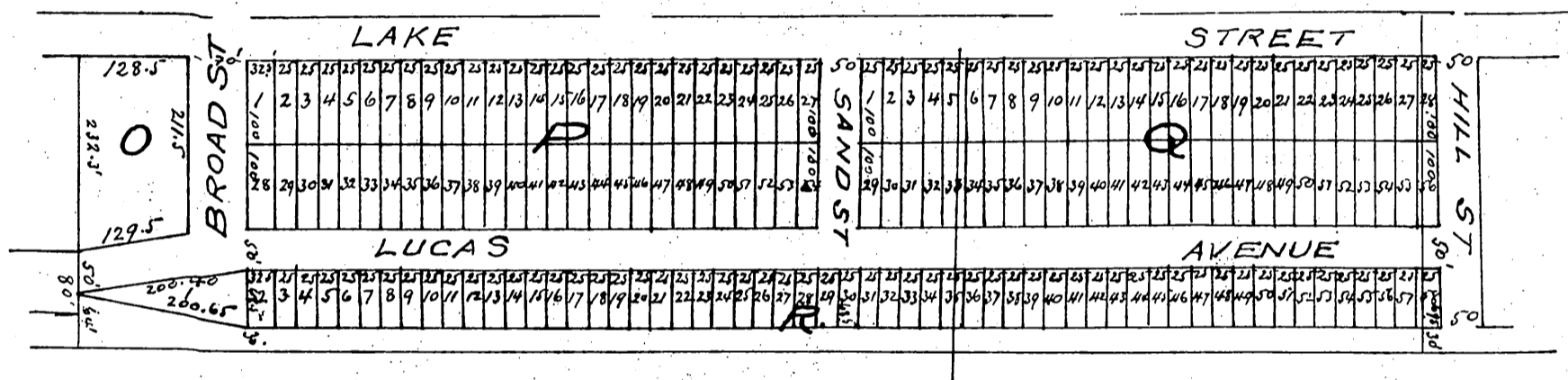


MAP OF SANTA MONICA COMMERCIAL CO'S TRACT

Being a subdivision of Blocks "D," "E," "F," and
part of "G" of Vawter's Subdivision of Blocks
6, 7, 8, 9, 10, 11, 12 and 13 of Lucas Tract Santa
Monica, Cal

April 1892.
Geo W Zacharias
Civil Engineer

Scale 100 feet to one inch



A full, true and correct copy of original
(scale reduced to 200 feet to one inch) recorded
June 6 1892 at 25 min past 11 am at request
of Santa Monica Commercial Co
J. K. Kelly County Recorder
By W. W. Mills Deputy