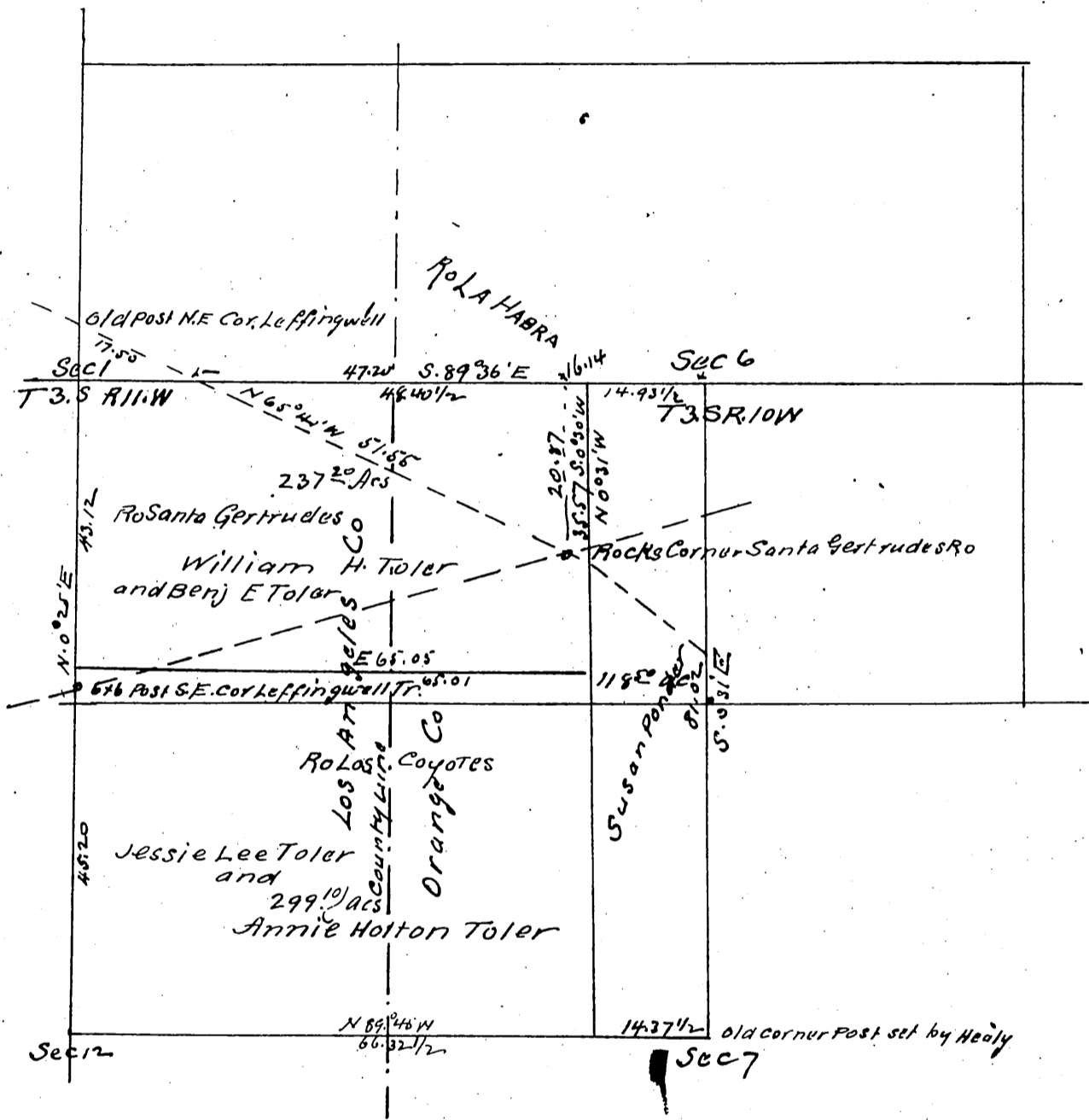


Plat of the TOLER TRACT

Los Angeles and Orange Counties
as per deed dated and recorded 27th
day of July 1881 Surveyed by Wright
& Nicholson May 1892

Scale 10chs 1 in



A full true and correct copy of original
{Scale reduced to 40chs to one inch.
recorded June 6-1892 at 34 min past 2 P.M.
at request of L.A. Abst Co.

J.A Kelley County Recorder.
By W.H. Mills Deputy.