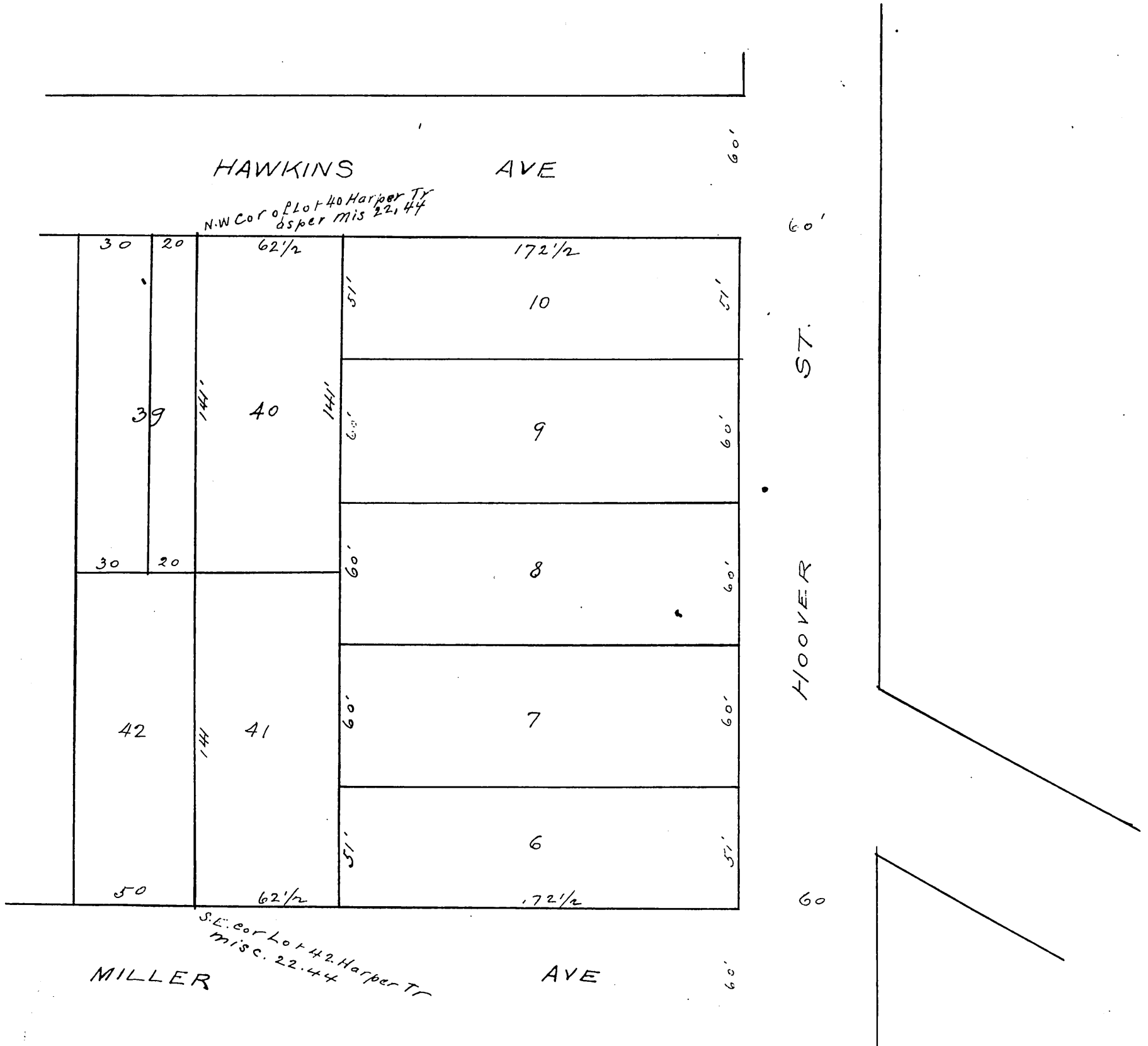


Re-plat
of Lots 6, 7, 8, 9, 10, 40 & 41
OF
Miller and Herriotts
Subdivision
OF THE
Harper Tract
SCALE 50' = 1 INCH

Note, This plat is made to show the size of lots 6, 10, 40 & 41 as increased by addition of an alley which alley was duly vacated by order of the Board of Supervisors of Los Angeles Co. Califa. and recorded Nov 4th 1891, in Road Book 3 page 399 records of said Supervisors Office Los Angeles Cal.



A full, true and correct copy of original recorded Sep. 14. 1892 at 11 min past 9 a.m. at request of J. Kelly Co. J. A. Kelly County Recorder by W. W. Mills Deputy.