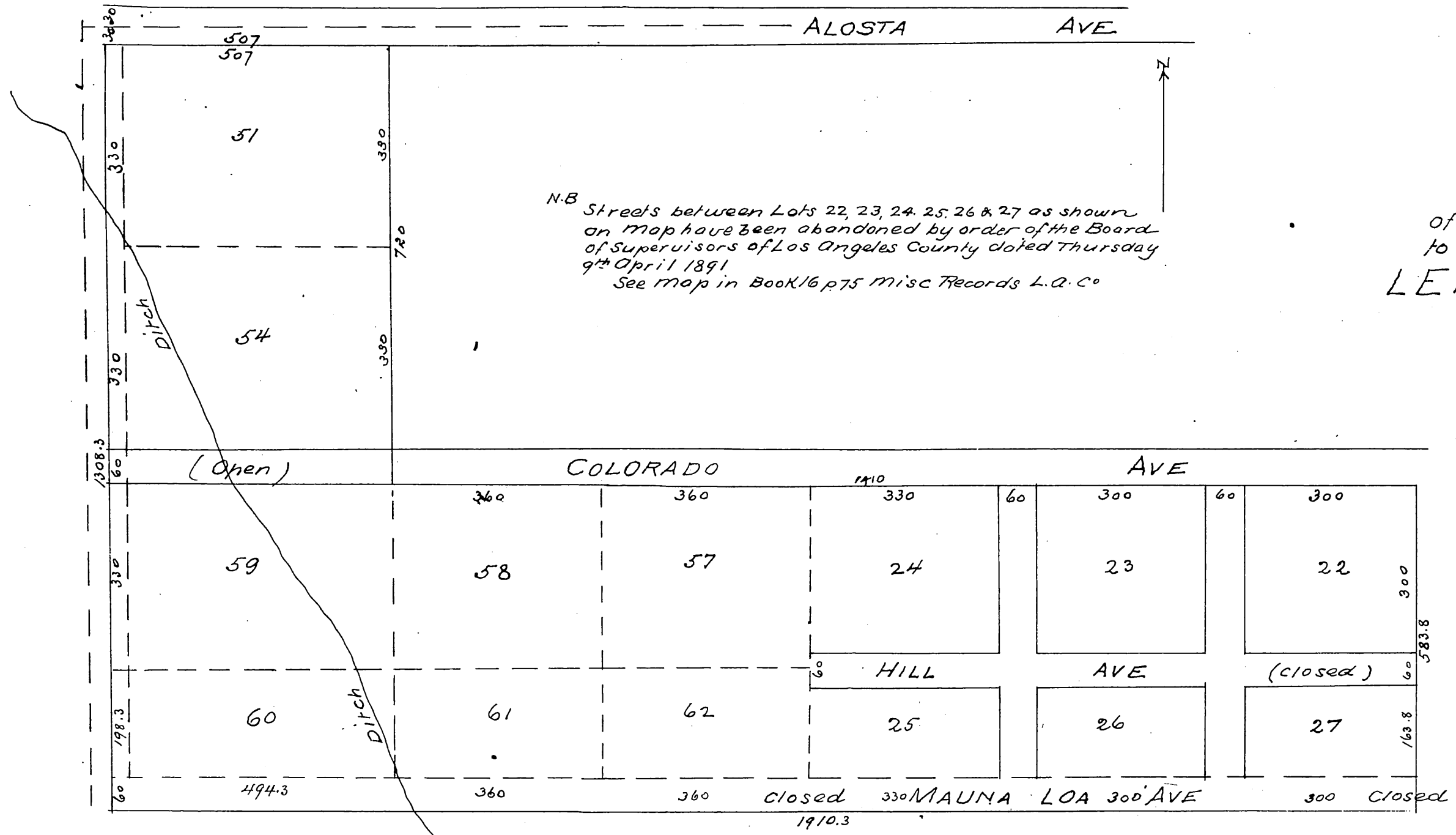




Replat  
of Lots 22 to 27, 51, 54 & 57  
to 62 inclusive of  
**LEMAR'S ADDITION**  
TO  
**ALOSTA**  
Scale 200 Ft. = 1 In

N.B. Streets between Lots 22, 23, 24, 25, 26 & 27 as shown  
on map have been abandoned by order of the Board  
of Supervisors of Los Angeles County dated Thursday  
9th April 1891  
See map in Book 16 p. 75 Misc Records L.A. Co



A full, true and correct copy of  
original recorded Oct 24 1892 at  
37 min past 10 am at request of  
J. P. Deanes  
J. A. Kelly County Recorder  
By W. W. Mills Deputy