

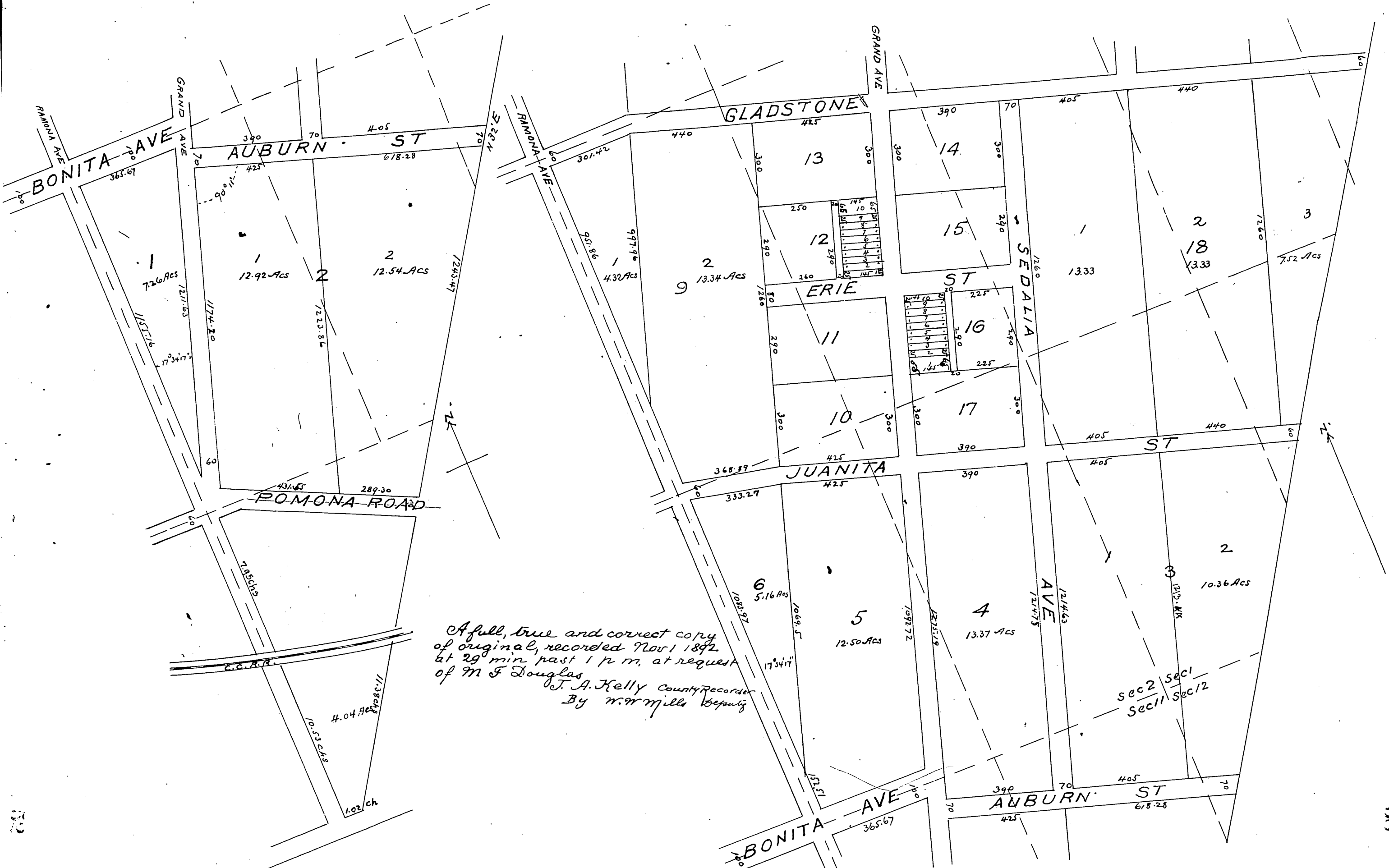
MAP OF THE LA VERNE TRACT

Being a subdivision of
the northeast portion of
the San Jose Ranch, Los
Angeles County, Calif.

Scale 300 feet to 1 inch.

W. E. Moant & C. E. Draughtsman

note the area of all lots includes
to the center of streets



A full, true and correct copy
of original, recorded Nov 1 1892
at 29 min past 1 p m, at request
of M F Douglas
J. A. Kelly County Recorder
By W. W. Mills Deputy

