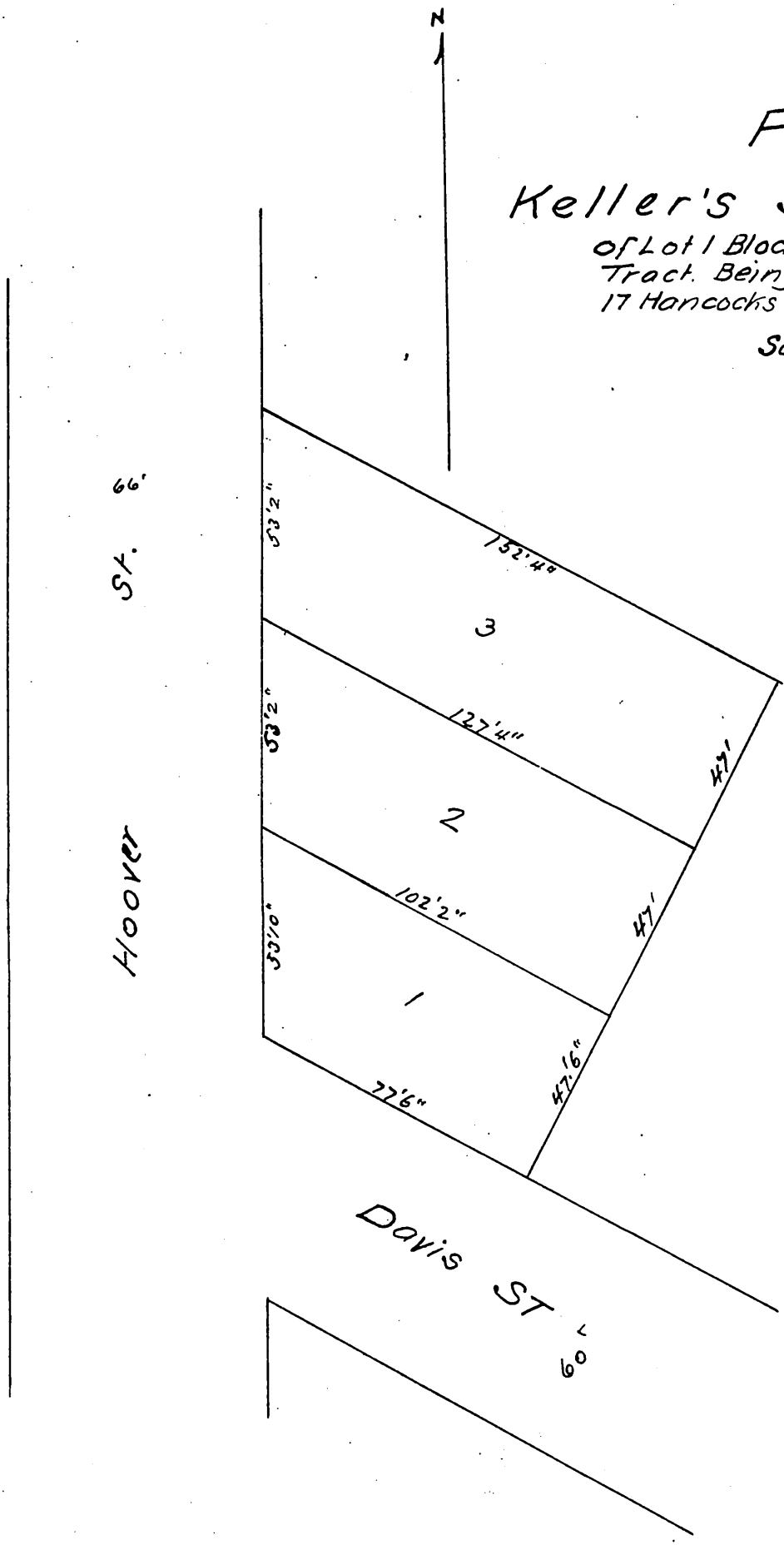


Plat of Keller's Subdivision

of Lot 1 Block 2 of the C.M. Wells
Tract. Being a part of Lot 6 Block
17 Hancock's Survey Los Angeles City Cal

Scale 40' = 1"



A full, true, and correct copy of original
recorded Jan 11 1893 at 55 min past 9 am
at request of Arthur Keller
Arthur Gray County Recorder
By W. W. Miller Deputy