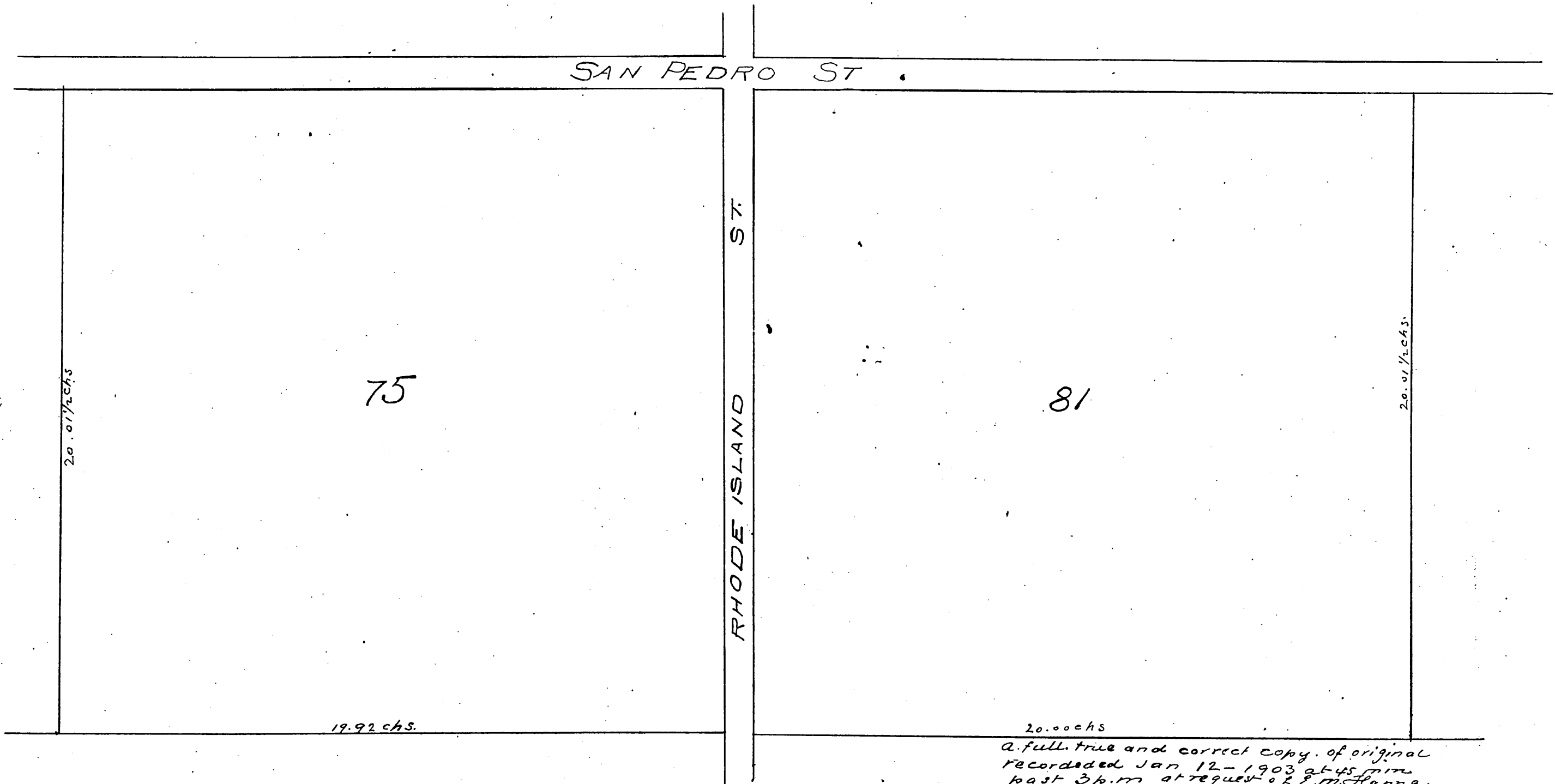


# Map of Blocks 75 and 81 of the McDonald Tract

Recorded by order of the Board of Supervisors of Los Angeles County of date January 11<sup>th</sup> 1893 abandoning the streets within the exterior limits of said blocks 75 and 81 appearing upon the map of McCoy's Addition to Broadacres (excepting Rhode Island and San Pedro streets) and restoring said blocks 75 and 81 to their original form as part of the McDonald Trt, according to map recorded in Vol 15 p 21 Misc Rec of Los Angeles County



20.00 chs  
A full, true and correct copy of original recorded Jan 12 - 1903 at 45 min past 3 p.m. at request of E. M. Hanna

Arthur Gray County Recorder  
Ray. W. W. Mills Deputy