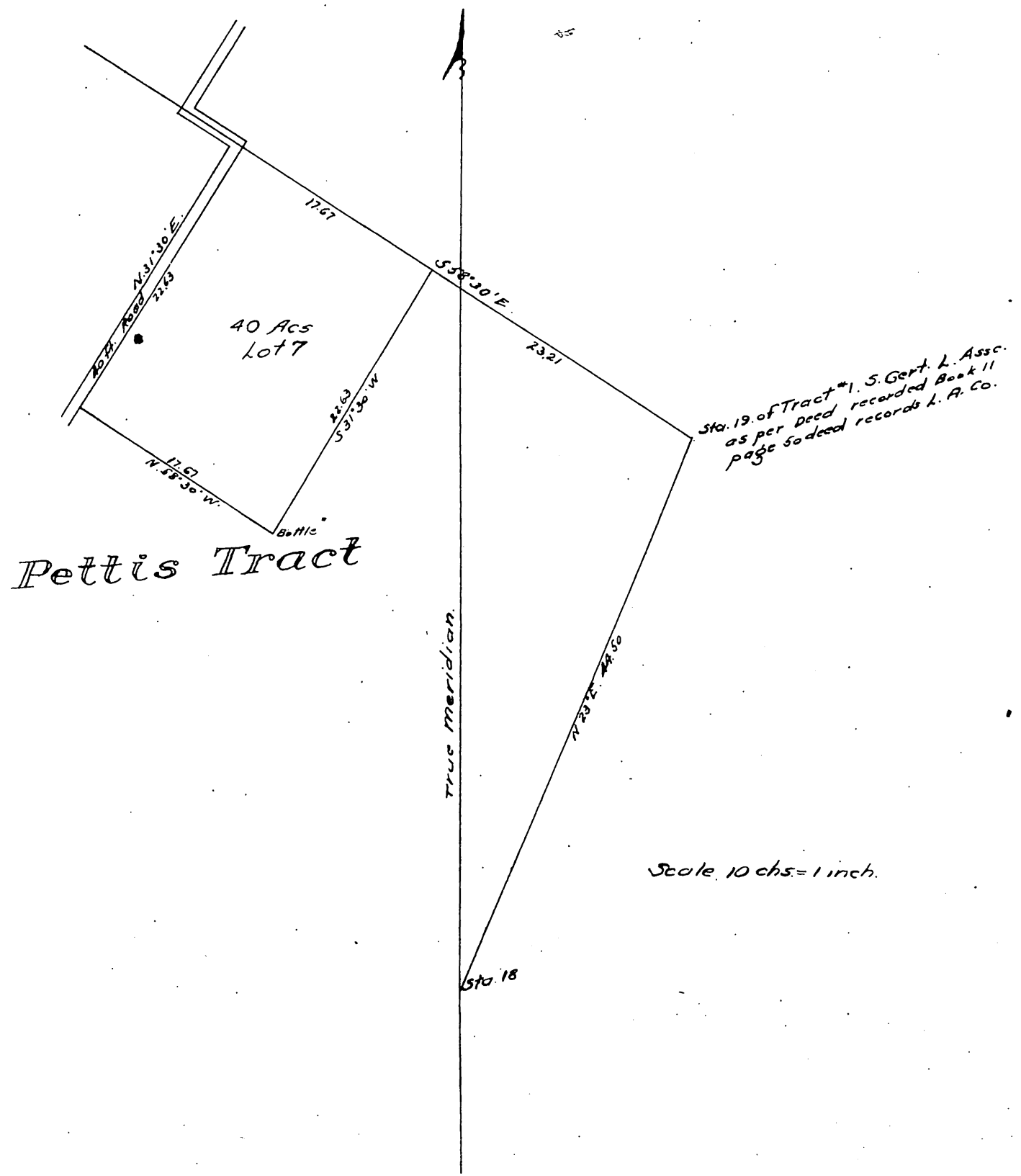


5270

Showing Lot 7 of  
 Baldwin's Survey of  
 the  
 Pettis Tract  
 R<sup>o</sup> Santa Gertrudes, L. A. Co. Califa.



A full, true and correct copy  
 of original, recorded Jan. 14 1893  
 at 37 min. past 3 p.m. at request  
 of L. A. Obst. Co.  
 Arthur Bray County Recorder  
 By W. W. Mills Deputy