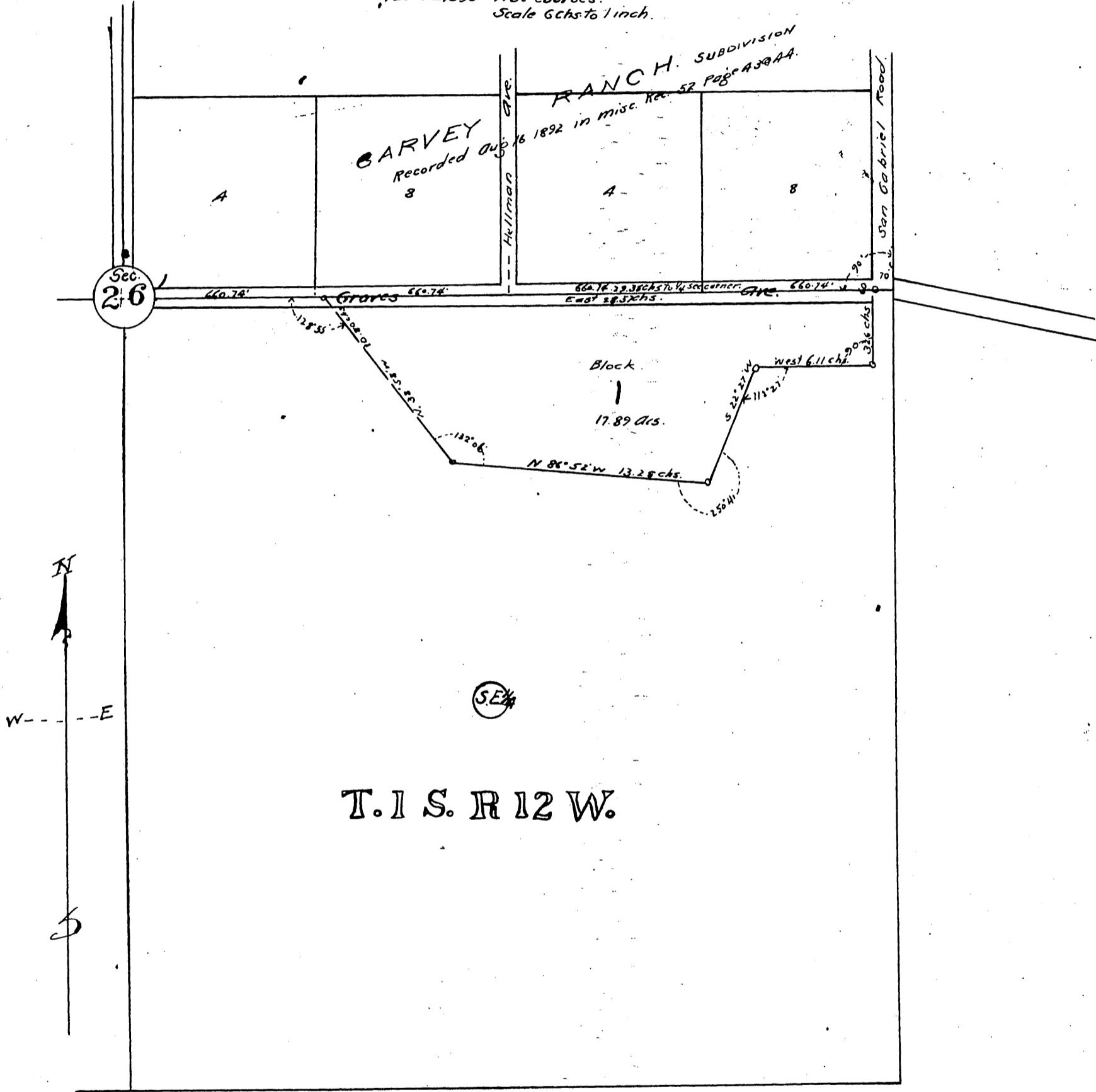




MAP
OF
ADDITION NO. 1
to the tract known as
THE
GARVEY RANCH

LOS ANGELES CO. CAL.
The plat of which is recorded in
the Recorder's Office of said County
in Miscellaneous Record No. 52,
pages A3 and A4.

4 Surveyed by John E. Jackson C.E. 3
Feb 27th 1893 True Courses.
Scale 6 chs to 1 inch.



A full, true, and correct copy of
original Recorded Feb 27 1893 at
42 min past 1 p.m. at request of
Richard Garvey Arthur Bray.
County Recorder
W. W. Milla Deputy.