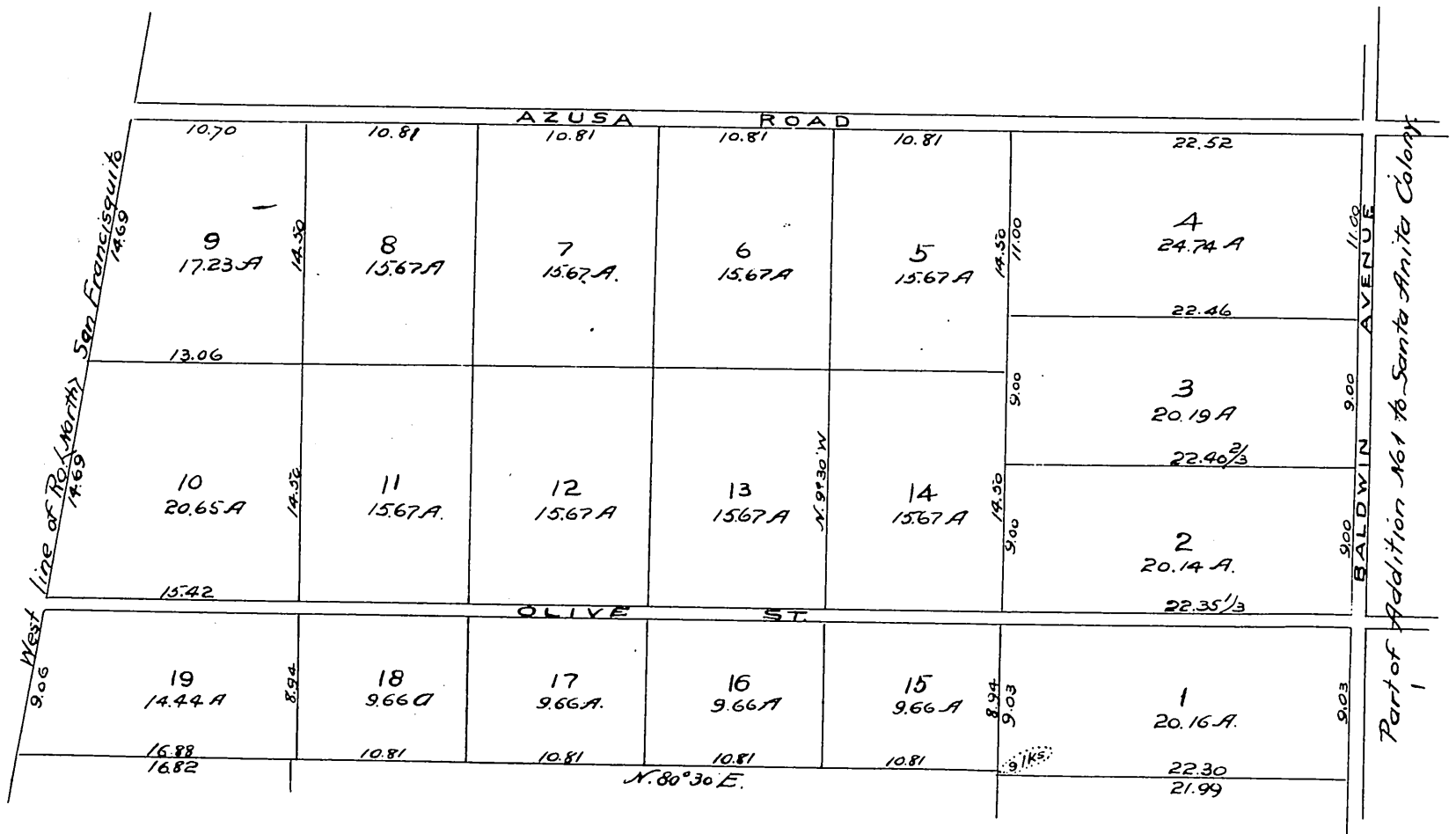


E. J. BALDWIN'S ADDITION NO 2 TO SANTA ANITA COLONY

*A Subd. of Lots 1, 2, 3, 4 and part of
5 of Goldsworthys Plat of the westerly
2/3 of Rancho San Francisquito as per
Map in Mis. Rec. 42 pages 93 & 94.*

*H. J. Stevenson Sur.
Scale 10 chs. per inch.
Feb. 1893.*



*A full, true, and correct copy of
original, recorded Mar 10 1893 at
20 min past 11 a.m. at request of
S. A. Abst Co. Arthur Peary County Recorder.
By W. H. Mills. Deputy.*