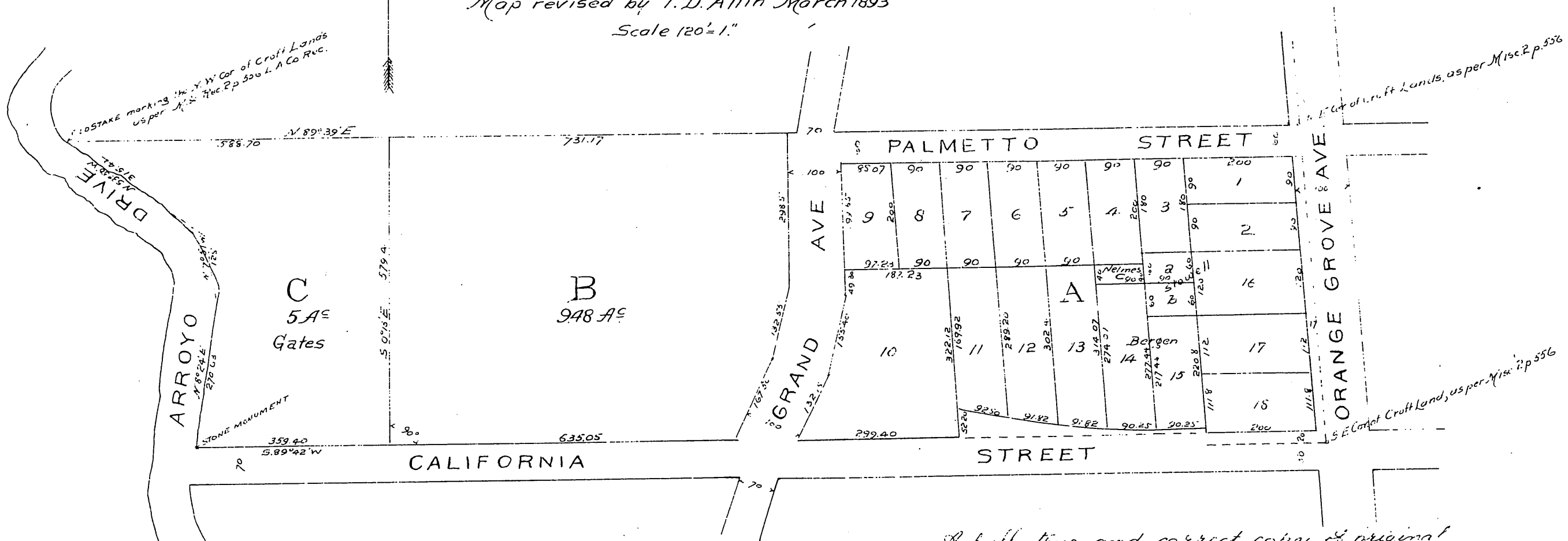


MAP OF GLEN ROSA

Property of Tho^s Nelmes
Being a subdivision of Lands marked "Croft"
in Division D of Lands of the San Gabriel Orange
Grove Assn PASADENA CAL. surveyed by Place
and Pieper C. Es. Nov 1887.

Map revised by T.D. Allin March 1893

Scale 120' = 1"



A full, true, and correct copy of original
{ scale reduced to 200 feet to one inch }
recorded Mar 23 1893 at 10 min past 4 p.m.
at request of J. A. Abst & Co.
Arthur Gray County Recorder,
By W. H. Mills Deputy.