



# COLEGROVE

PART OF RANCHO LA BREA

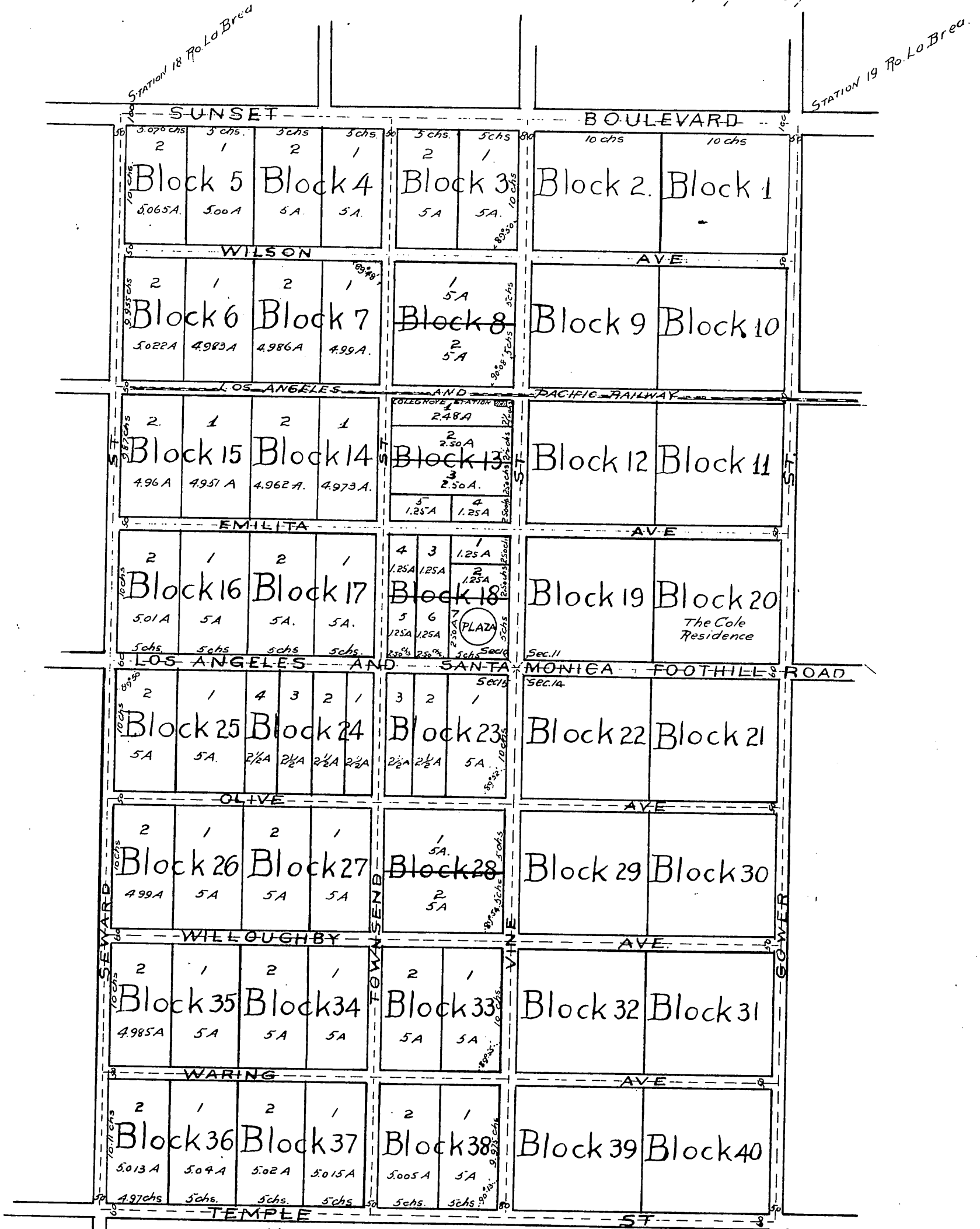
in Sec. 10, 11, 14, 15. T. 1 S. R. 14 W. S. B. M.

## CAHUENGA VALLEY

Los Angeles County.

True Courses --- Var. 14° 15' E ... Scale 4 Chs. to an Inch.

John Goldsworthy  
U.S. Deputy Surveyor.



NOTE: All measurements made to center of streets.

A full, true, and correct copy of original  
 (scale reduced to 8 chs. to an inch).  
 recorded Mar 25 1893 at 52 min. past  
 4 p.m. at request of Los Angeles Abstract Co.  
 Arthur Bray County Recorder  
 By W. W. Mills Deputy.