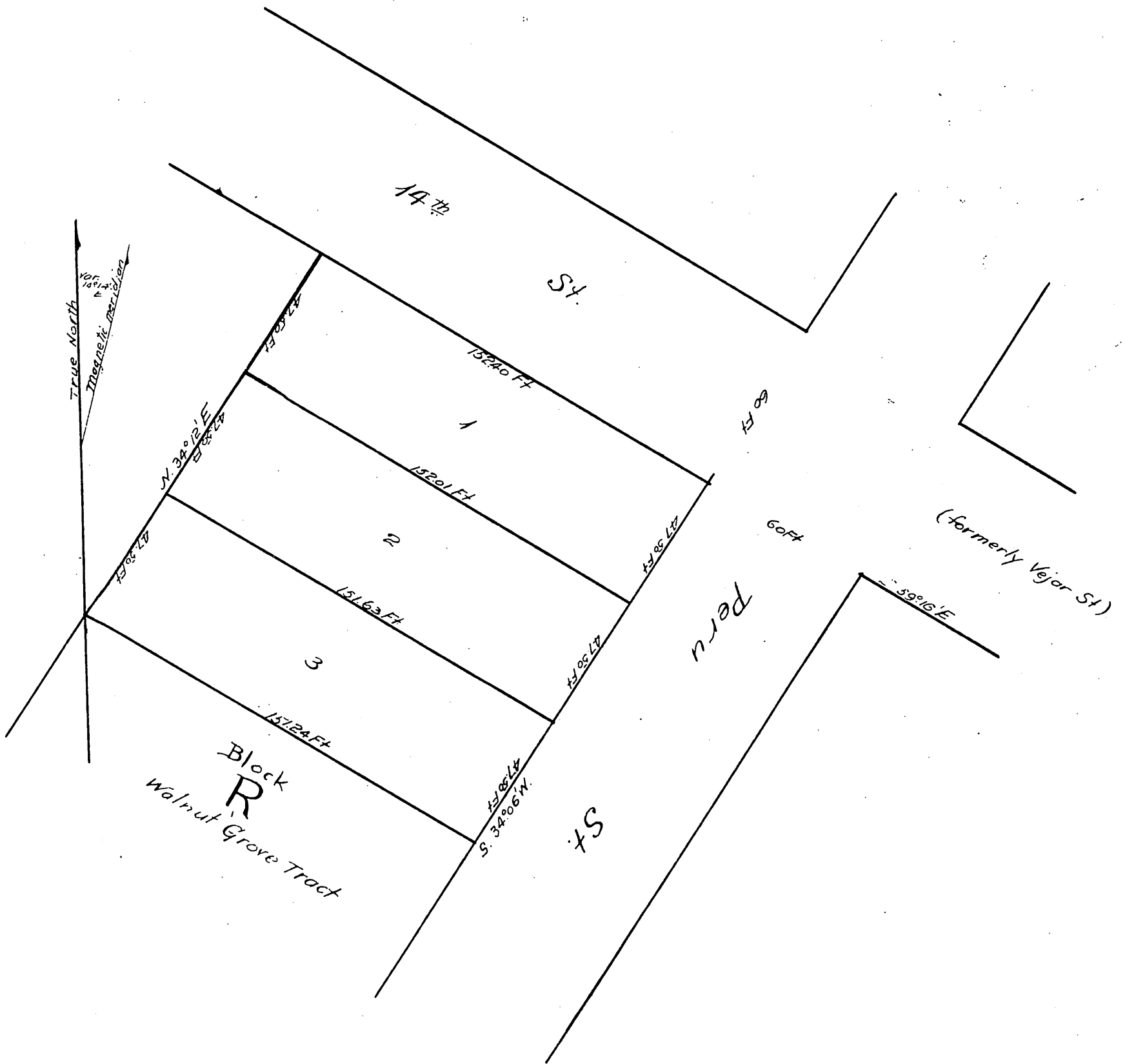


MAP
of
A. B. STAFFORD'S
Subdivision of Lots 1, 2, and 3
of Block R, Walnut Grove Tract.
Los Angeles, Cal.

Scale 40 Feet to 1 inch.



A full, true, and correct copy of Original
recorded Mar 30 1893 at 20th min past 10
a.m. at request of Frank S. Gibson
Arthur Gray
County Recorder.
By W. W. Mills, Deputy.