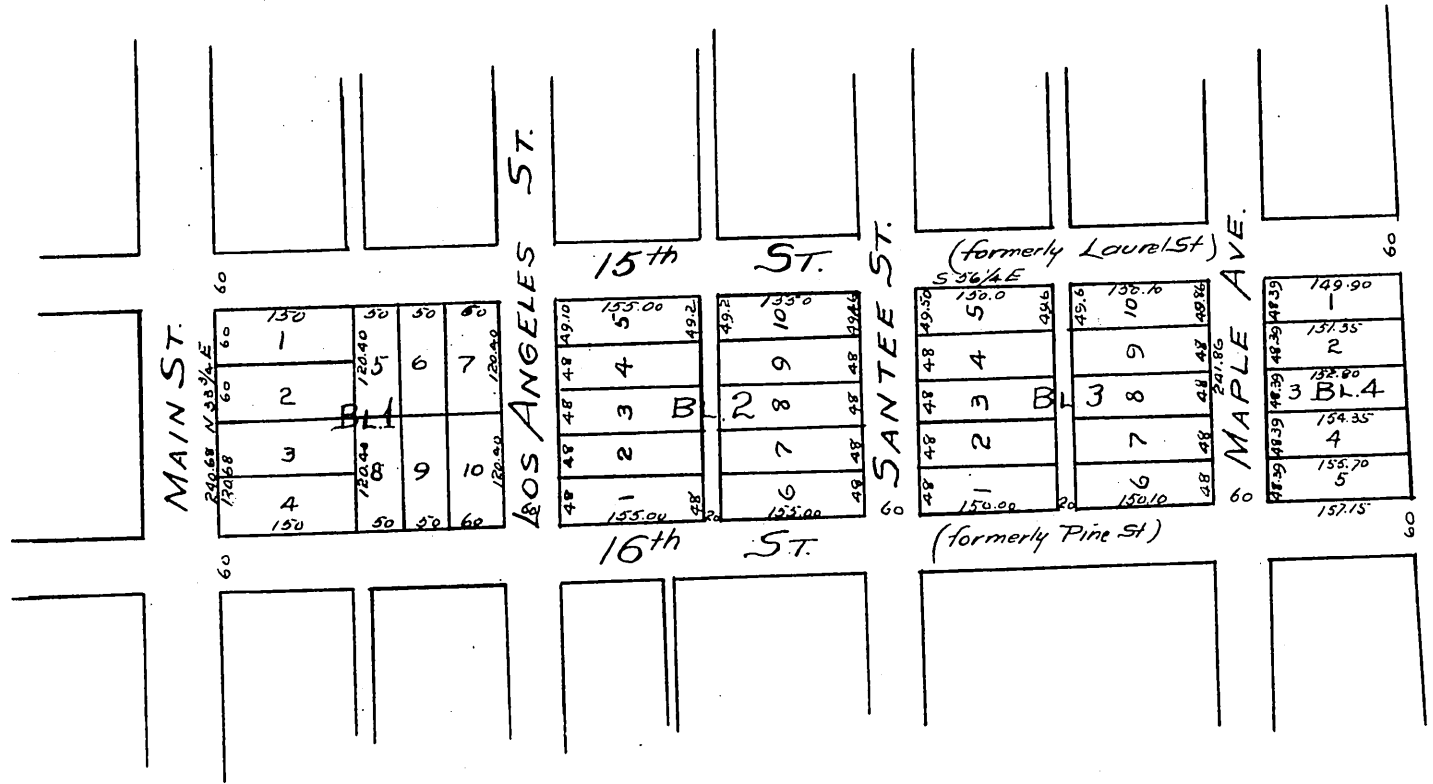


MIGUEL SUBDIVISION

part of the
Celis Vineyard Tract
 in Los Angeles City Cal
 Surveyed by Joseph H. Smith Mar 24.25.1893

TRUE COURSES SCALE OF 1 INCH TO 100 FEET.



A full, true and correct copy of the original (scale reduced to 200 feet to 1 inch) recorded Apr. 15 1893 at 5 min past 11 am. at request of C. F. de Celis.
 Arthur Gray,
 County Recorder.
 By W. W. Mills Deputy.