

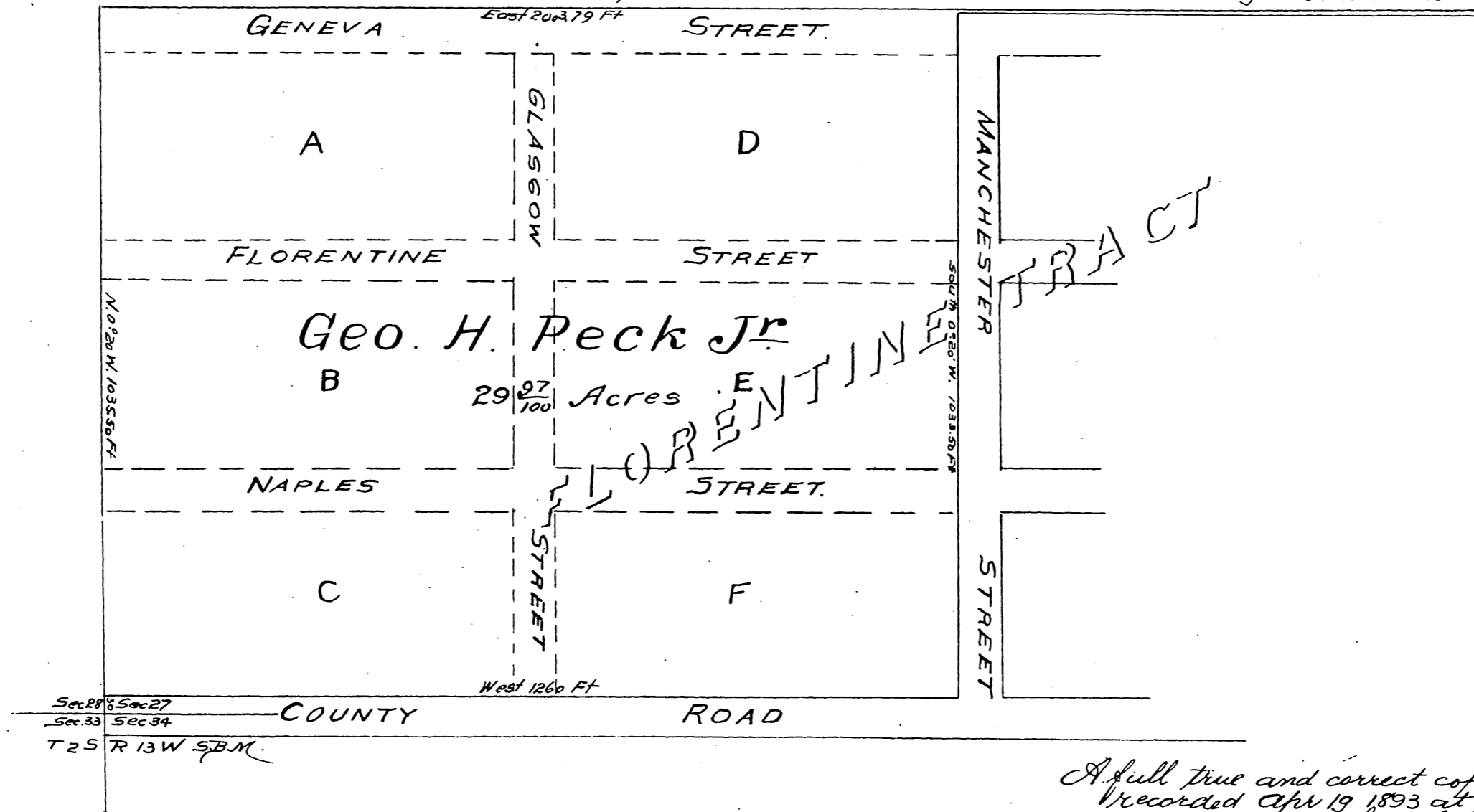
REPLAT
of a portion of the
FLORENTINE TRACT

as per map recorded in Book 28 page
57 Records of Los Angeles County Cal-
ifornia showing the

VACATIONS

OF BLOCKS AND STREETS West of MANCHESTER STREET and NORTH of COUNTY ROAD.
per Order of the Board of Supervisors in their meeting of Jan. 11th 1893

J. A. Bernal.
Sur.



A full true and correct copy of original.
Recorded Apr 19 1893 at 50 min. past 9 a.m.
at request of Geo. H. Peck Jr.
Arthur Gray
County Recorder.
By W. W. Mills Deputy.