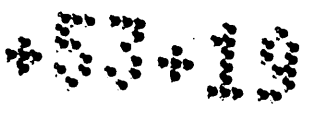


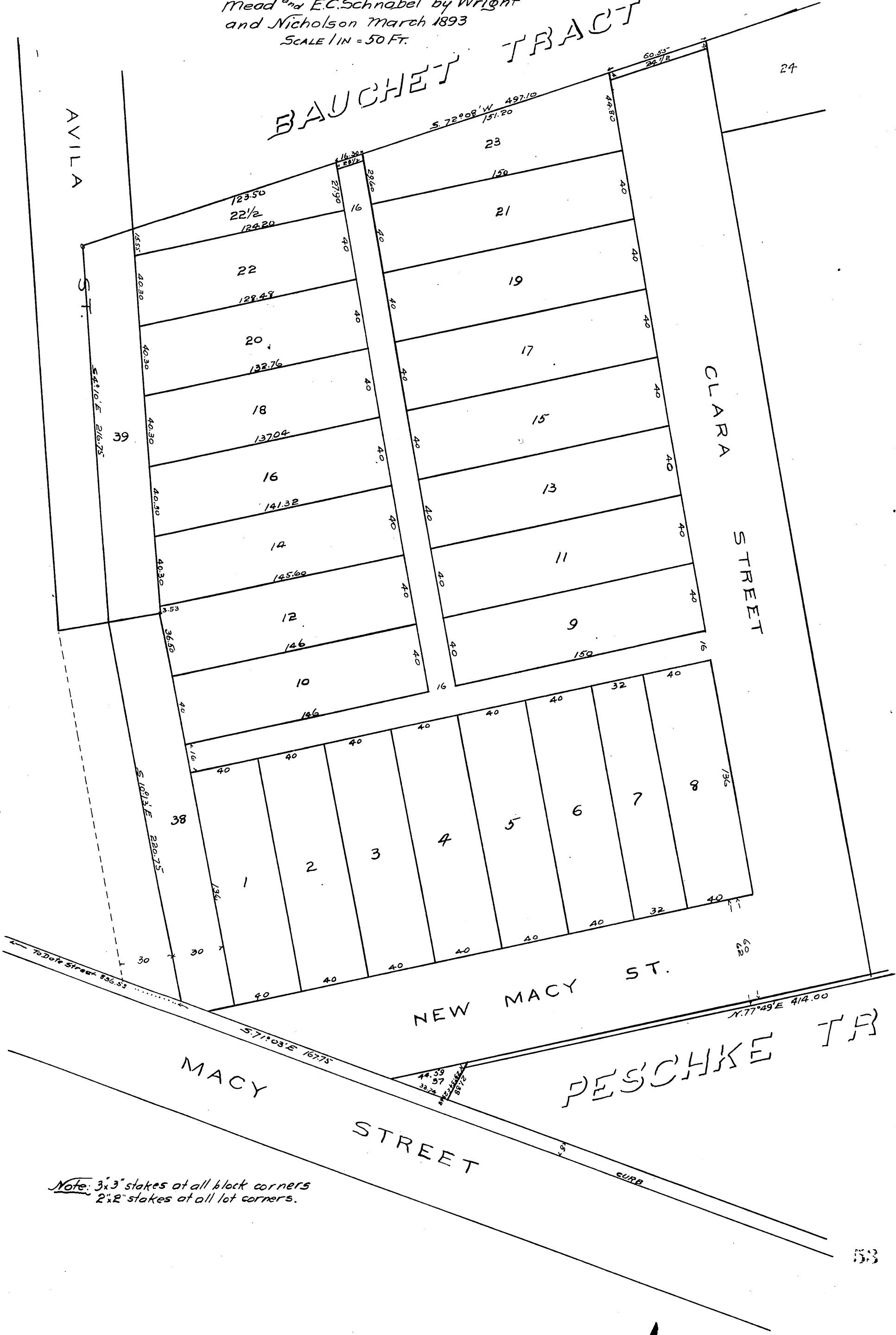
MAP of



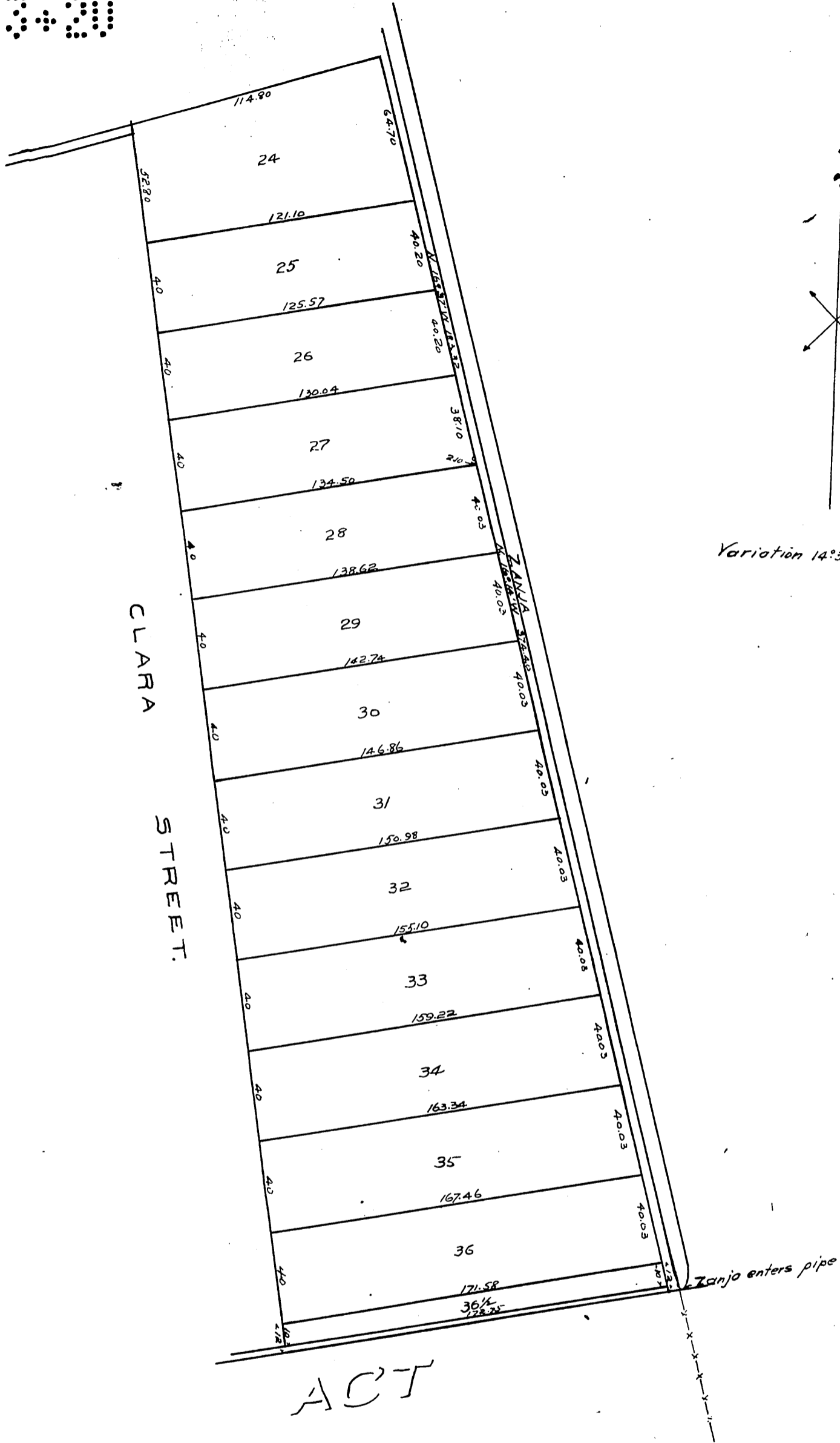
MACY STREET TRACT

being that portion of the
 AVILA ESTATE lying north of MACY STREET
 subdivided at request of William
 Mead and E.C. Schnabel by Wright
 and Nicholson March 1893
 SCALE 1 IN = 50 FT.

BAUCHET TRACT



Note: 3x3 stakes at all block corners
 2x2 stakes at all lot corners.



Variation 14°30' East.

ACT

A full, true and correct copy of original
 recorded Apr. 22 1893 at 24 min past 3 p.m.
 at request of Mead and Schrybnel.
 Arthur B. Kay
 County Recorder.
 By W. W. Mills Deputy.