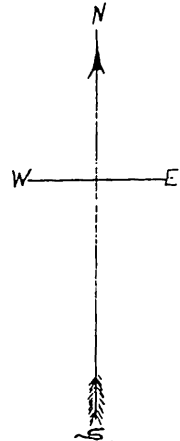
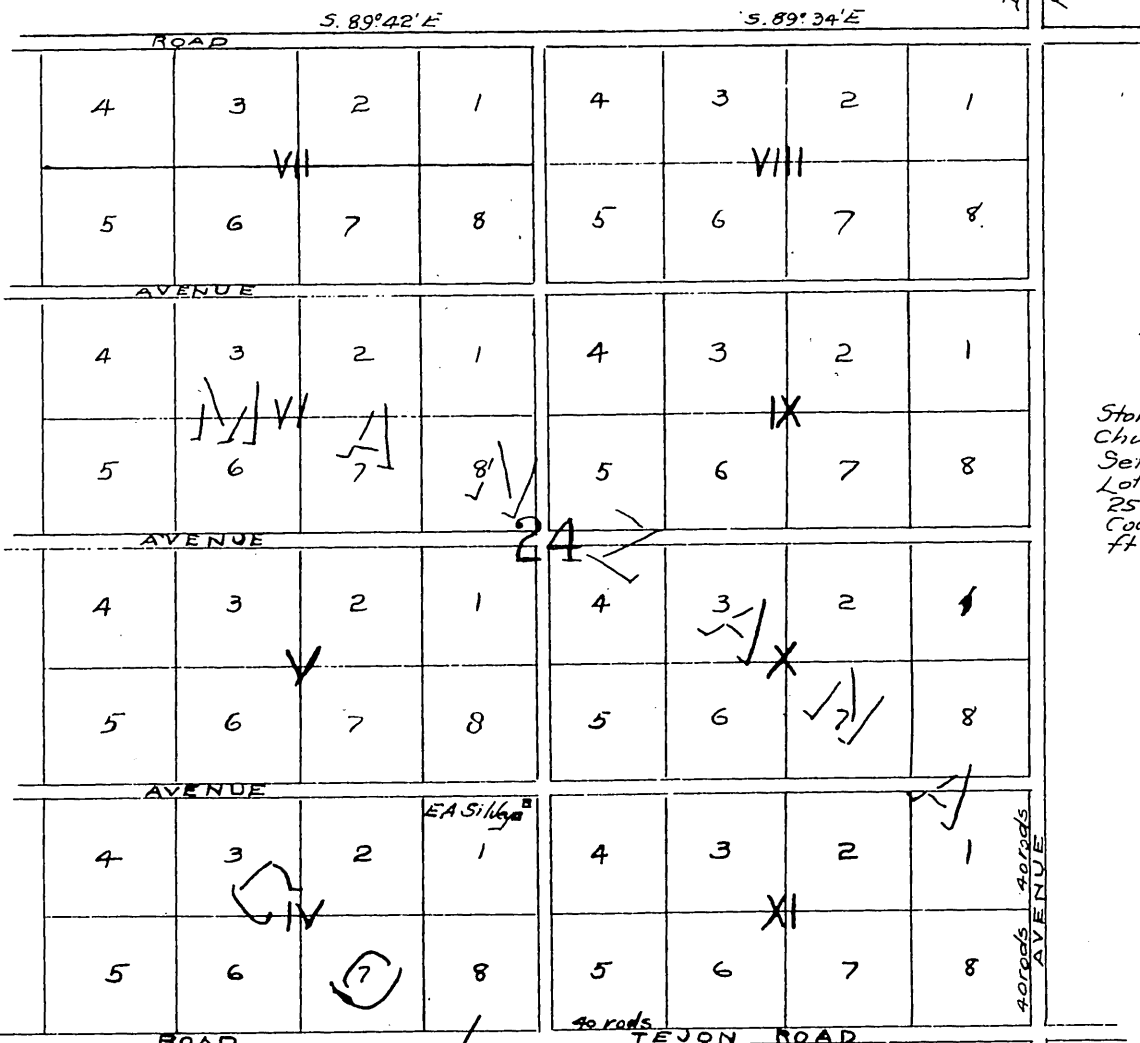


Map of MANZANA COLONY

comprising Sec's 23, 24 & 25
T8N. R.16W. S8M.
and other lands
LOS ANGELES CO. CAL.

Distance 2 1/2 Miles to
Projected Santa Fe R.R.



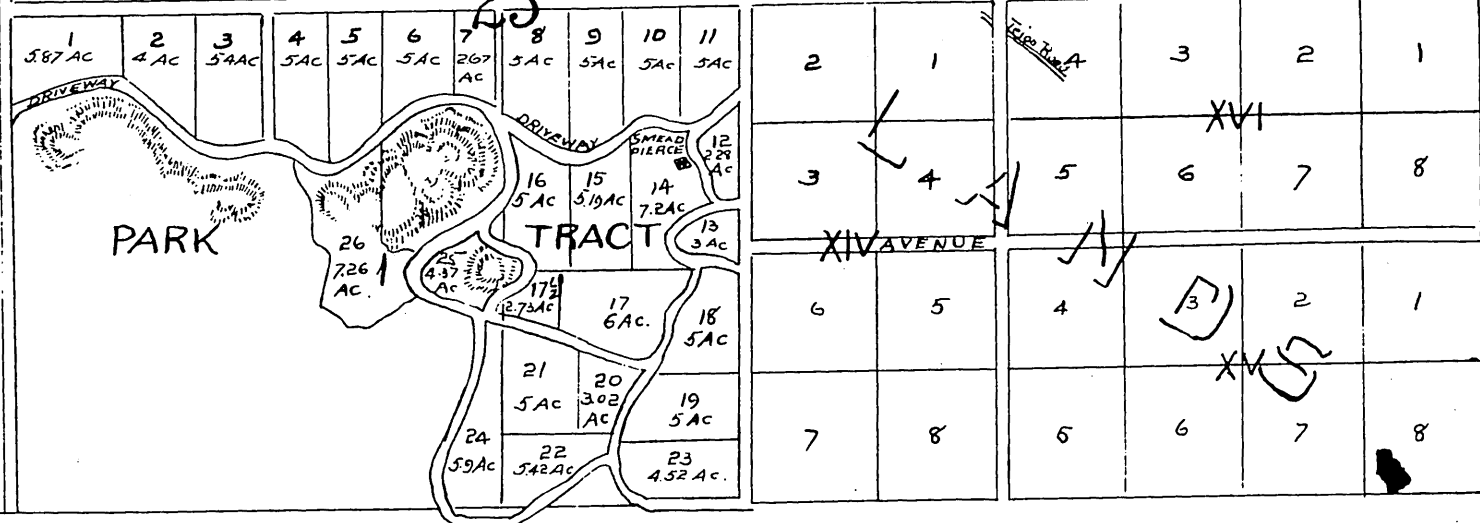
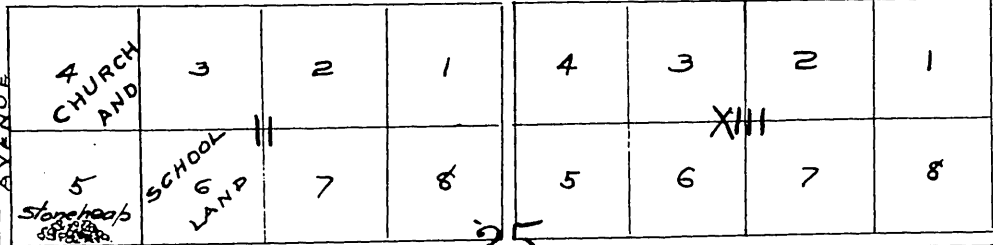
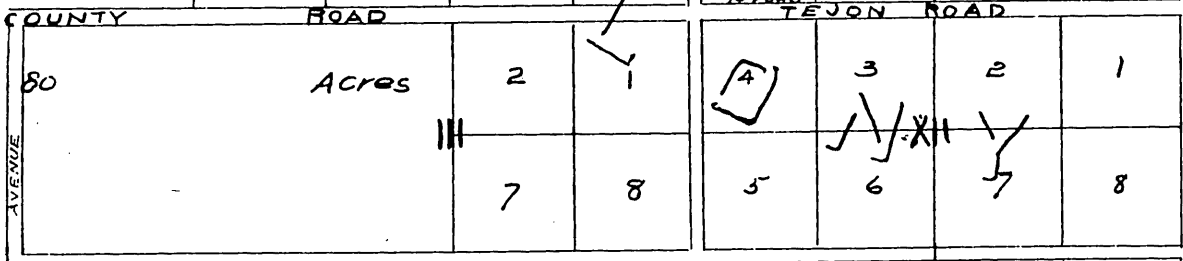
Scale: 1 inch = 10 chs April 1893

NOTE.
Stone heap about 25 ft high to be used for building Church and Schoolhouse and for foundations for Settlers Houses; see Lot 5 Block 11. Lots in Sec. 23 contain 5 Acres each; in Secs 24 & 25, 10 Acres each. County Roads are 60 ft wide; other Roads are 30 ft wide.

OFFICERS.
Elihu Smead President
E. W. Edson Genl Manager
E. A. Gilvey V. President & Orchard Mgr.
A. A. Smead Secy & Treas.
Thos. W. Baskins Colonizing Supt

DIRECTORS
Elihu Smead
L. L. Pierce
A. A. Smead
E. A. Gilvey
O. L. Livesey
E. W. Edson
J. W. Baskins. D.D.

C. A. Ensign
J. C. McClure
Civil Engineer & Surveyors.
April 1893 Los Angeles
California



A full, true and correct copy of original
(scale reduced to 15 chains to one inch)
recorded May 6 1893 at 28 min past 3 p.m.
at request of Elihu Smead
Arthur Bray
County Recorder.
By W. W. Mills Deputy.