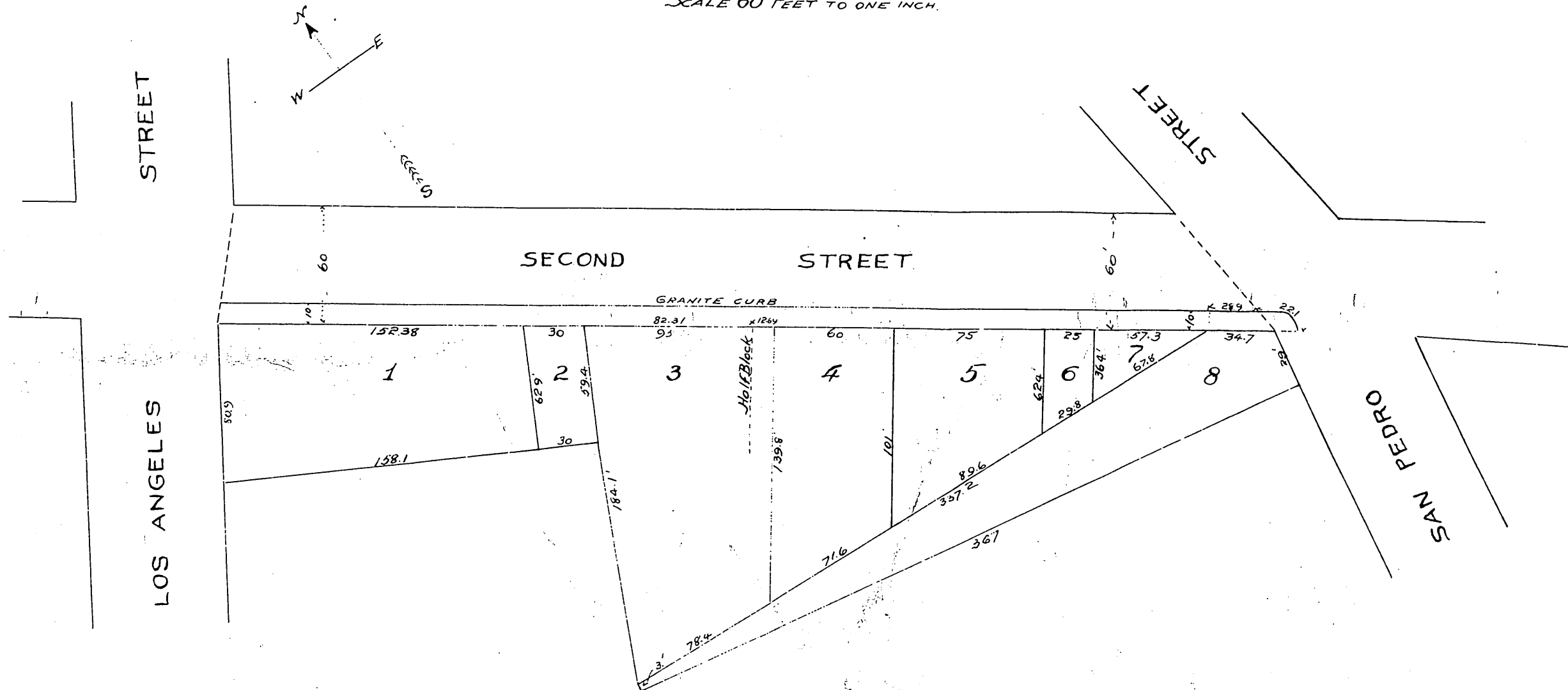


Map of that portion of the block of land in the City of Los Angeles, State of California, bounded by Los Angeles, Second, San Pedro, and Third Streets, showing property fronting on said Second Street.

SCALE 60 FEET TO ONE INCH.



NOTE

Portion colored Blue shows cement sidewalk.  
 The mark ' means feet. Figures in block ink next  
 to property lines show each the length of said lines in feet.  
 I hereby certify that this diagram is correct.  
 J. H. Dockweiler.  
 L. A. Cal. May 29 1893 City Engineer.

A full true and correct copy of  
 original, recorded May 29 1893 at  
 41 min. past 11 a.m. at request of  
 J. H. Polk.  
 Arthur Brian  
 County Recorder.  
 By W. W. Mills, Deputy.

