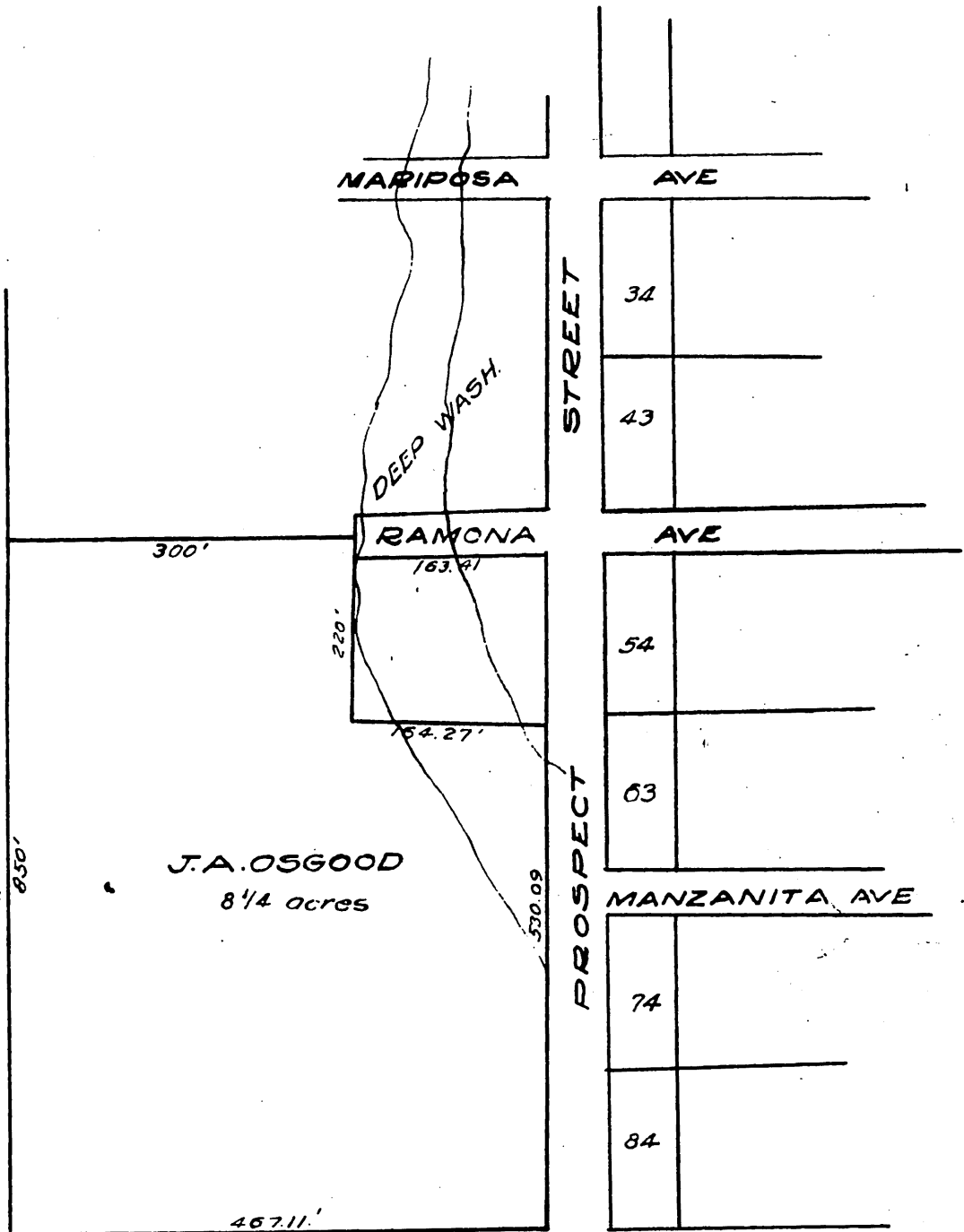


53

Map of a part of the Prospect Tract, Sierra Madre, Los Angeles County, Cal. And being that portion of said Tract reverted to acreage, and that portion of Manzanita Avenue, abandoned by the Board of Supervisors, Aug. 17, 1892, as shown by map in Book 53 page 5, Miscellaneous Records. Also that portion Ramona Avenue abandoned by said Board April 20, 1893. Map of said Prospect Tract rec. Bk 14, pg. 37 M. R. Road Book 4, page 265.



Recorded - October 7, 1893  
 At request of J.A. Osgood.