

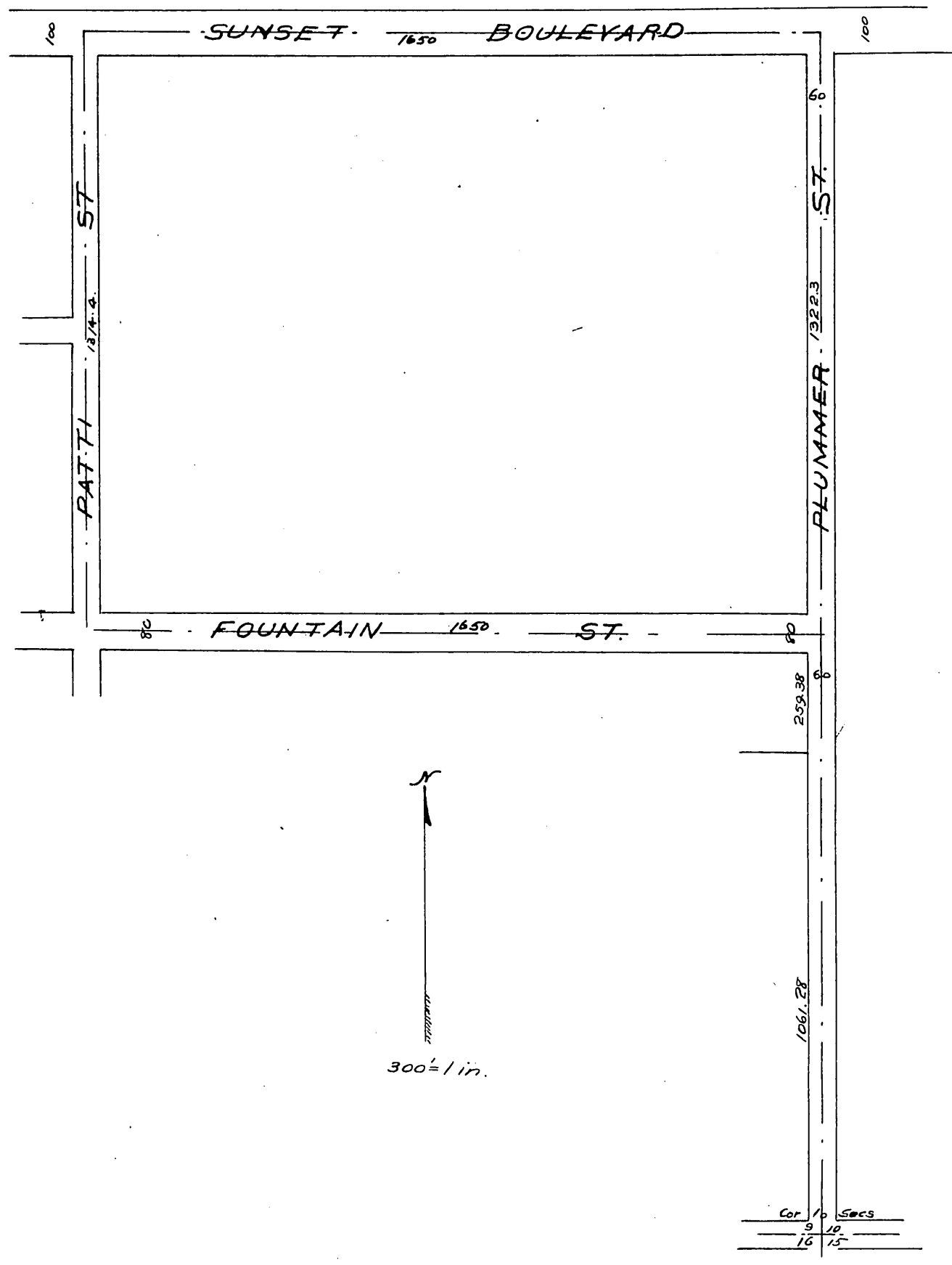


RE-PLAT

OF
Lots 1 to 6 inclusive,
13 to 24 inclusive,
and 31 to 36 inclusive.
of

PLUMMER'S SUBDIVISION

of the N 1/2 of the SE 1/4 of Sec. 9 T. 1 S. R. 14 W. S. B. M. as recorded in Miss. Records of Los Angeles Co. Cal. Book 30, Page 32
Said Lots being VACATED and REVERTED back to ACREAGE per Order of Board of Supervisors hereto attached



IN RE VACATION OF STREETS PLIMMERS SUB.

Upon the filing of statement as to ownership of property affected by the proposed vacation herein and upon motion of Supervisor Forrester, duly heard and carried it is ordered that Wilson Avenue between Patti and Plummer St. and Sara Street as designated upon Map of "Plummers Subdivision" be and the same are hereby declared vacated and abandoned upon the filing for record in the Office of the County Recorder of a map of all property as affected by said vacation.

State of California }
County of Los Angeles } s.s.

No.
I, T. H. Ward County Clerk, and ex-officio Clerk of the Superior Court, do hereby certify the foregoing to be a full, true and correct copy of the Original Order of the Board of Supervisors vacating Wilson Avenue between Patti and Plummer Streets and Sara Street as designated upon a map of "Plummers Subdivision" recorded in Book 4 Page 311 on file in my office, and that I have carefully compared the same with the original.

In Witness Whereof I have hereunto set my hand and affixed the seal of the Superior Court this 17th day of October 1893
T. H. Ward County Clerk
By A.W. Seaver Deputy.

A full true and correct copy of original recorded Oct 18 1893 at 22 min. past 11 a.m. at request of E. C. Harrington.
Arthur Gray
County Recorder.
By W.W. Mills Deputy.