

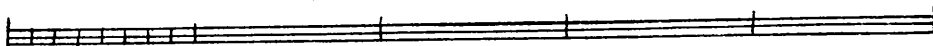
# PLAN de LA CIUDAD DE LOS ANGELES

Surveyed & Drawn by  
E. O. Cord L<sup>t</sup> USA &  
W<sup>m</sup> R. Hutton Asst  
August 29<sup>th</sup> 1849

*Explanation of the signs*

Plough <sup>d</sup> Ground	
GARDENS	
ROAD	
SANJA	
HEDGE	
POLE FENCE	
CORN	
VINES	

SCALE OF 10 INCHES TO THE MILE



Compass course of Main Street from corner opposite Jose Ant<sup>o</sup> Carillos House S. 24° 45' W.  
Compass course of Main St North of the Church N. 9 1/2° E.  
Variation of the Needle 12° 44' E