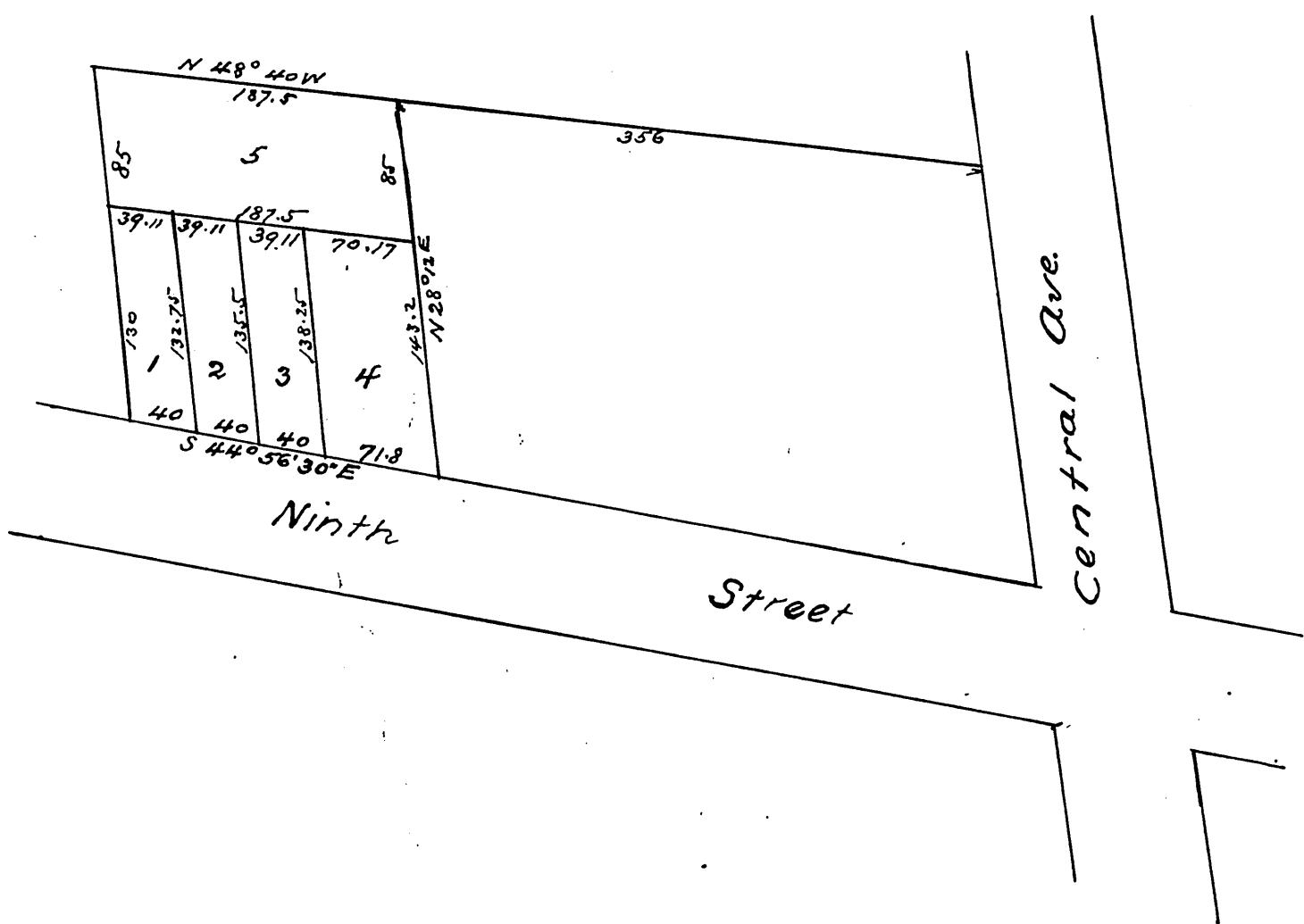


Map  
 OF  
 M<sup>c</sup>Quilkin's Re-Plat  
 of  
 Lots 6-7-8-9 and 10 Contreras and Reyes Subdivision  
 Scale 60 Ft. to 1 in



Owners John McQuilkin  
 Kate McQuilkin

A full true and correct copy of the original (scale reduced to 100 feet to one inch) recorded Feb. 20 1894 at 10 min past 2 p.m. at request of John Quilkin  
 Arthur Bray Co. Recorder  
 by W. W. Mills Deputy