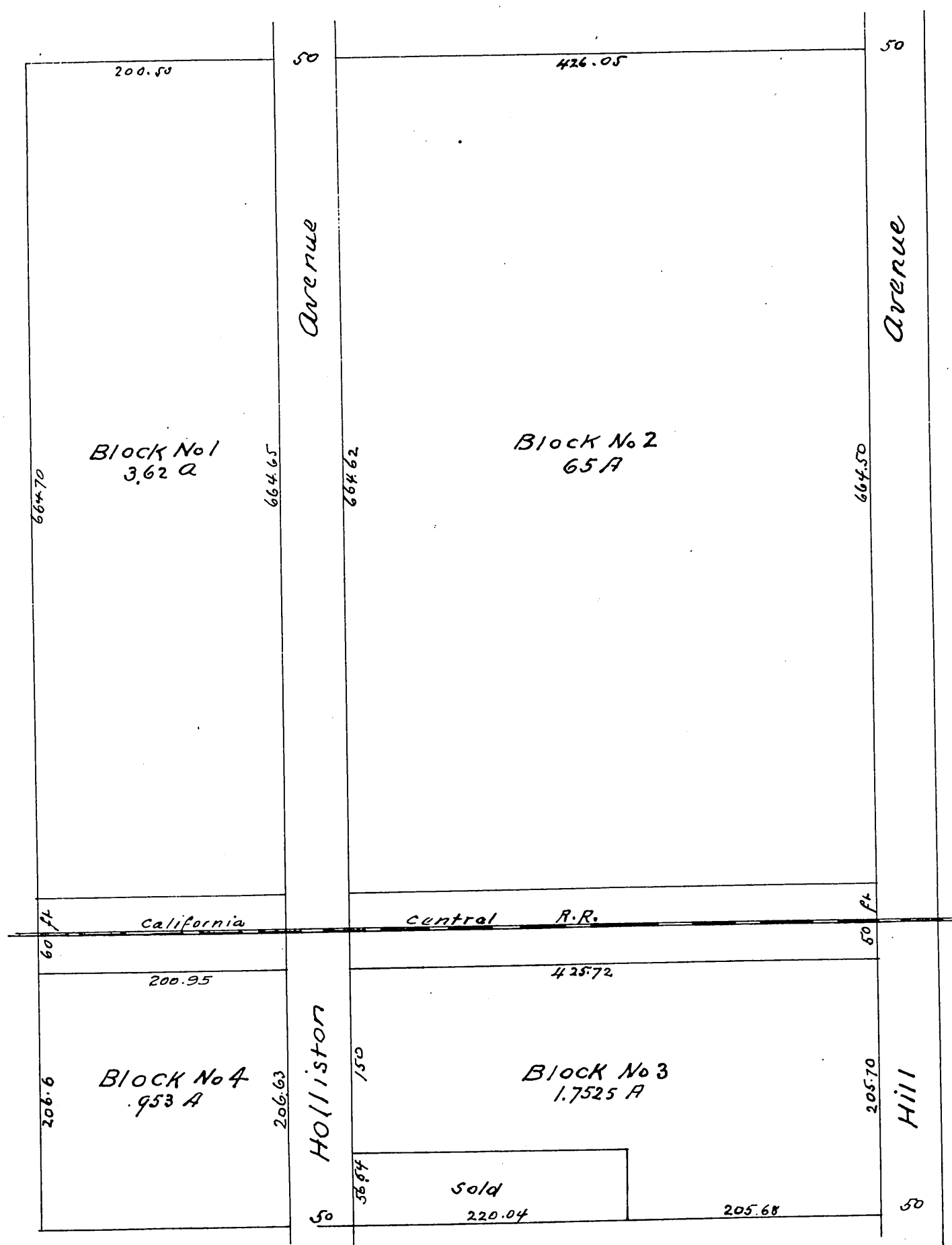


J. S. Bartlett's amended Plat of the Abilene Tract

original recorded in Book 324 page 135 of deeds of Los Angeles Coun Cal
Pasadena
Cal

Scale 60 feet = 1 inch



A full true and correct copy of original
recorded Feb 27 1894 at 30 min past 12 m
at request of J. S. Bartlett (Scale reduced
to 100 feet to one inch) Arthur Bray Co Rec.
by NW Mills Deputy.