

# Map of a Subdivision of Lot 1 Block F

as shown on

"Official Map No 3 of Los Angeles City on file in the office of the County Recorder of Los Angeles County in Book 1 of pages 465-466 Mis. Rec. The lands shown on the above described record are commonly known as the

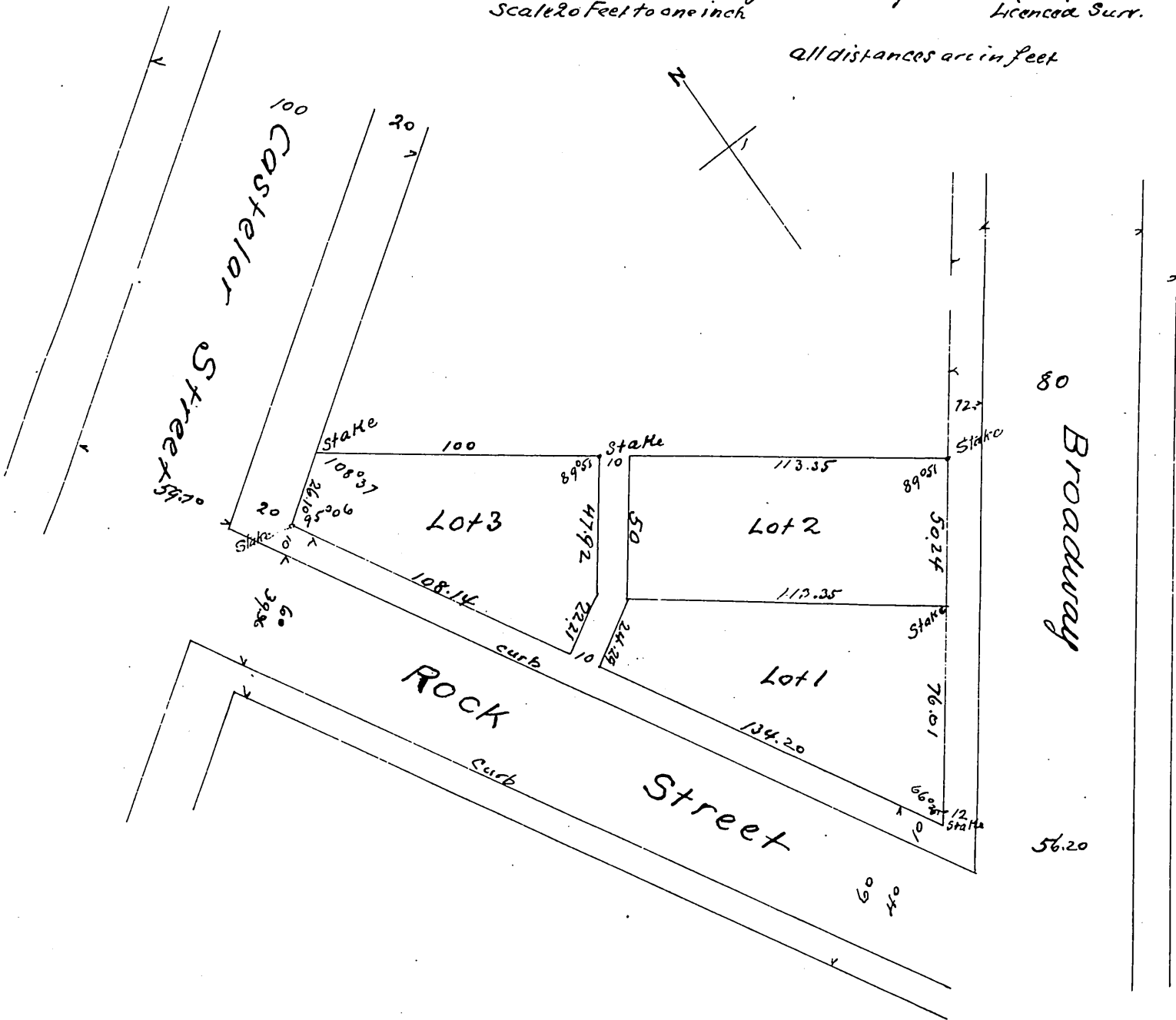
## Fort Hill Tract

City of Los Angeles California

Surveyed at request of Geo H Smith May 18<sup>th</sup> 1892 by Valentine J. Rowan Licenced Surr.

Scale 20 Feet to one inch

all distances are in feet



Owner Geo S. Patton

A full true and correct copy of the original (Scale reduced to 50 feet to one inch, surveyors certificate placed above owner's certificate) recorded Mar 3 1894 at 50 min past 2 P.M. at request of Geo. S. Patton

Arthur Bray Co Rec  
by W. W. Mills Deputy