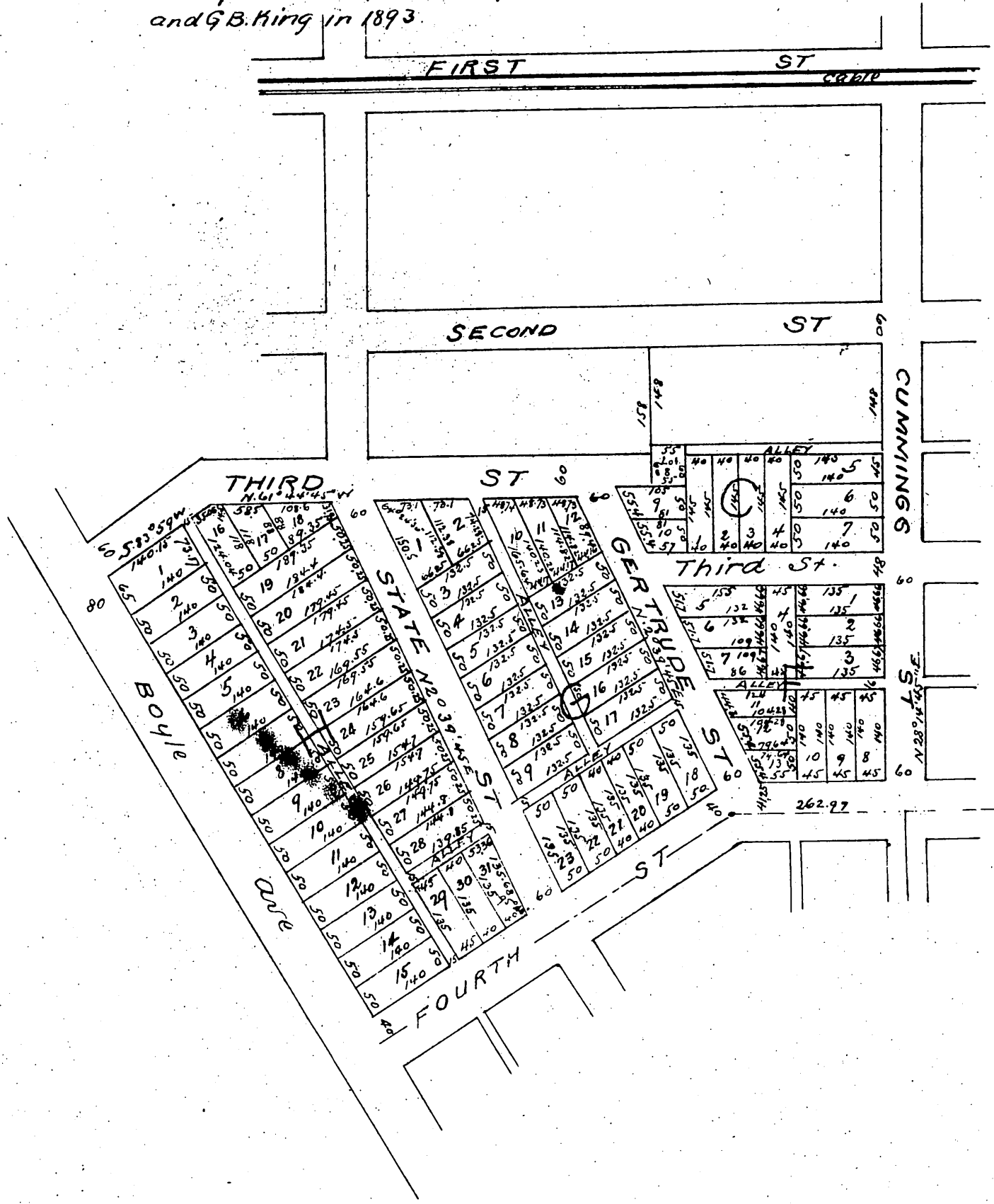


Map of the Workman Park Tract Boyle Heights Los Angeles Cal

Scale 100ft to 1 in.

Note
Blocks South of Fourth Str. were surveyed and subdivided
by G.B. King in 1893
Dimensions of Blocks north of Fourth St are calculated
from surveys made by J. H. Dockweiler in 1887
and G.B. King in 1893.



Owners: W. H. Workman, Henry W. Keller