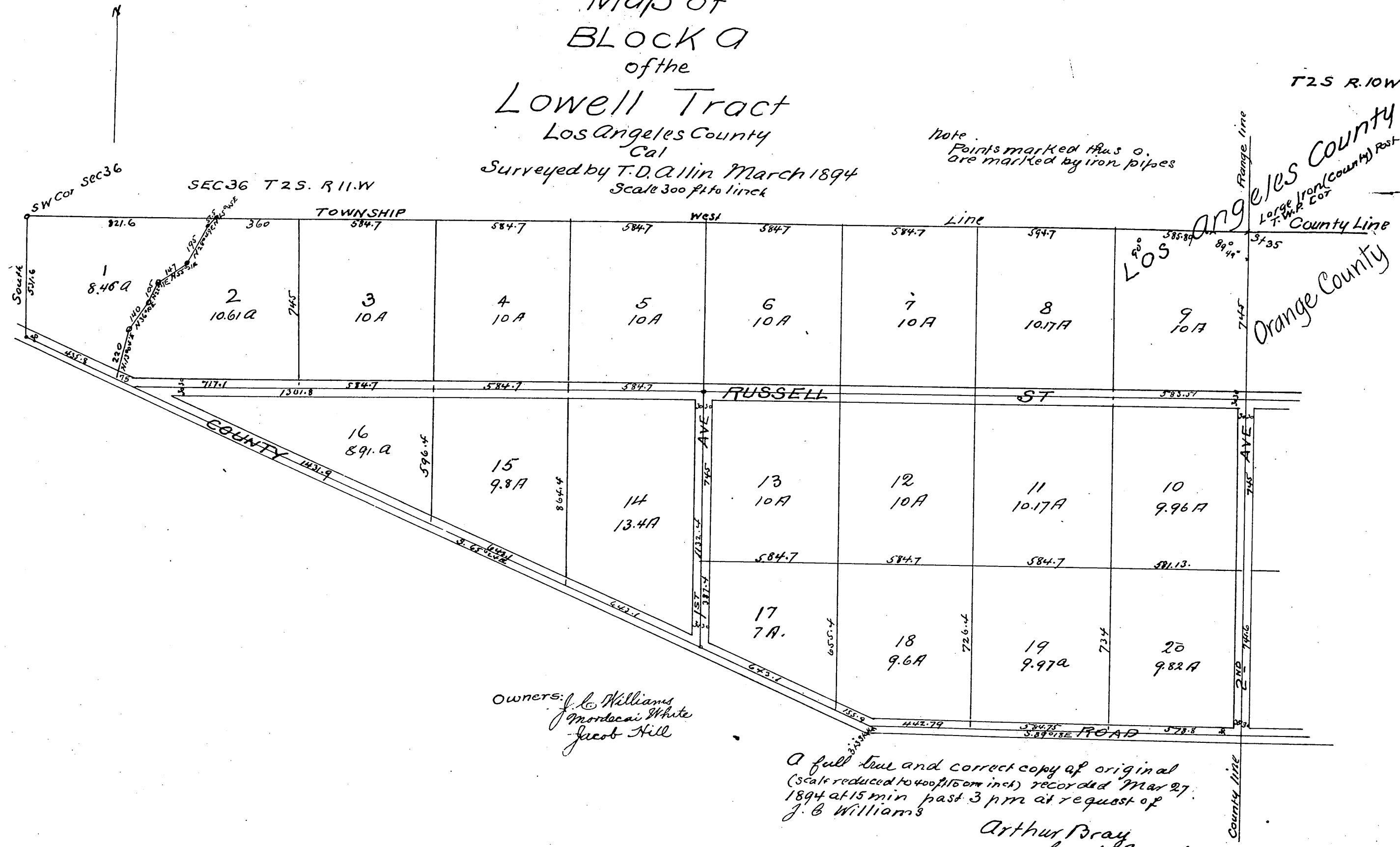




Map of
Block A
of the
Lowell Tract
Los Angeles County
Cal

Surveyed by T.D. Allin March 1894
Scale 300 ft to 1 inch

Note:
Points marked thus o.
are marked by iron pipes



OWNERS:
J. L. Williams
Mordcai White
Jacob Hill

A full true and correct copy of original
(scale reduced to 400 ft to 1 inch) recorded Mar 27
1894 at 15 min past 3 pm at request of
J. B. Williams

Arthur Bray
County Recorder
by W. W. Mills Deputy