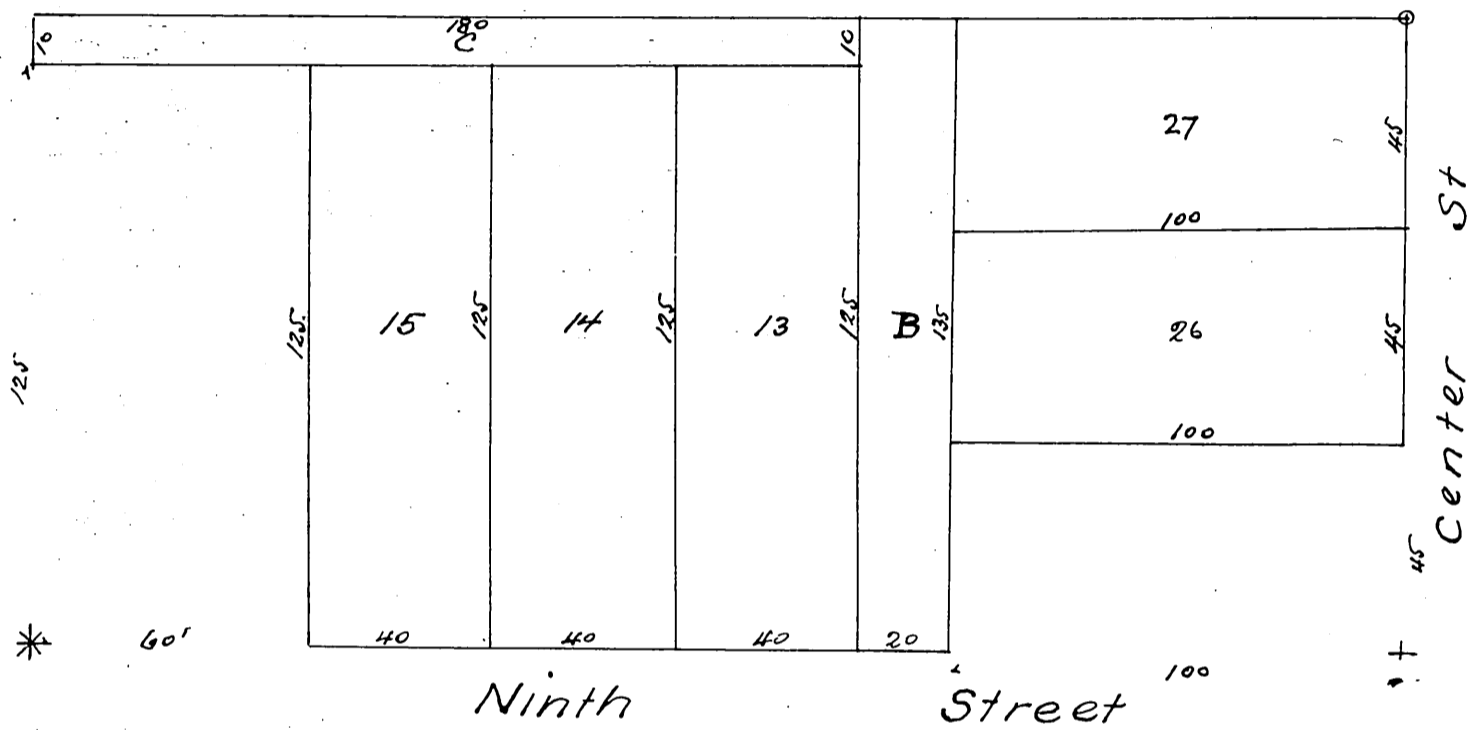
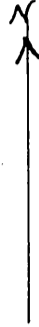


Peck's Subdivision of a portion of the South East quarter (Lot 3) of Block 38 San Pedro Cal

Scale 40 ft. = 1 inch

- o Designates center of East End line Blk. 38
- * Designates center of South side line Blk. 38
- x Designates South East Corner Blk. 38.



owner

Geo H. Peck Jr.

A full true and correct copy of the original
recorded April 13 1894 at 21 min past 10 a.m. at
request of Geo. H. Peck Jr.

Arthur Pray County Recorder
by W. W. Mills Deputy.