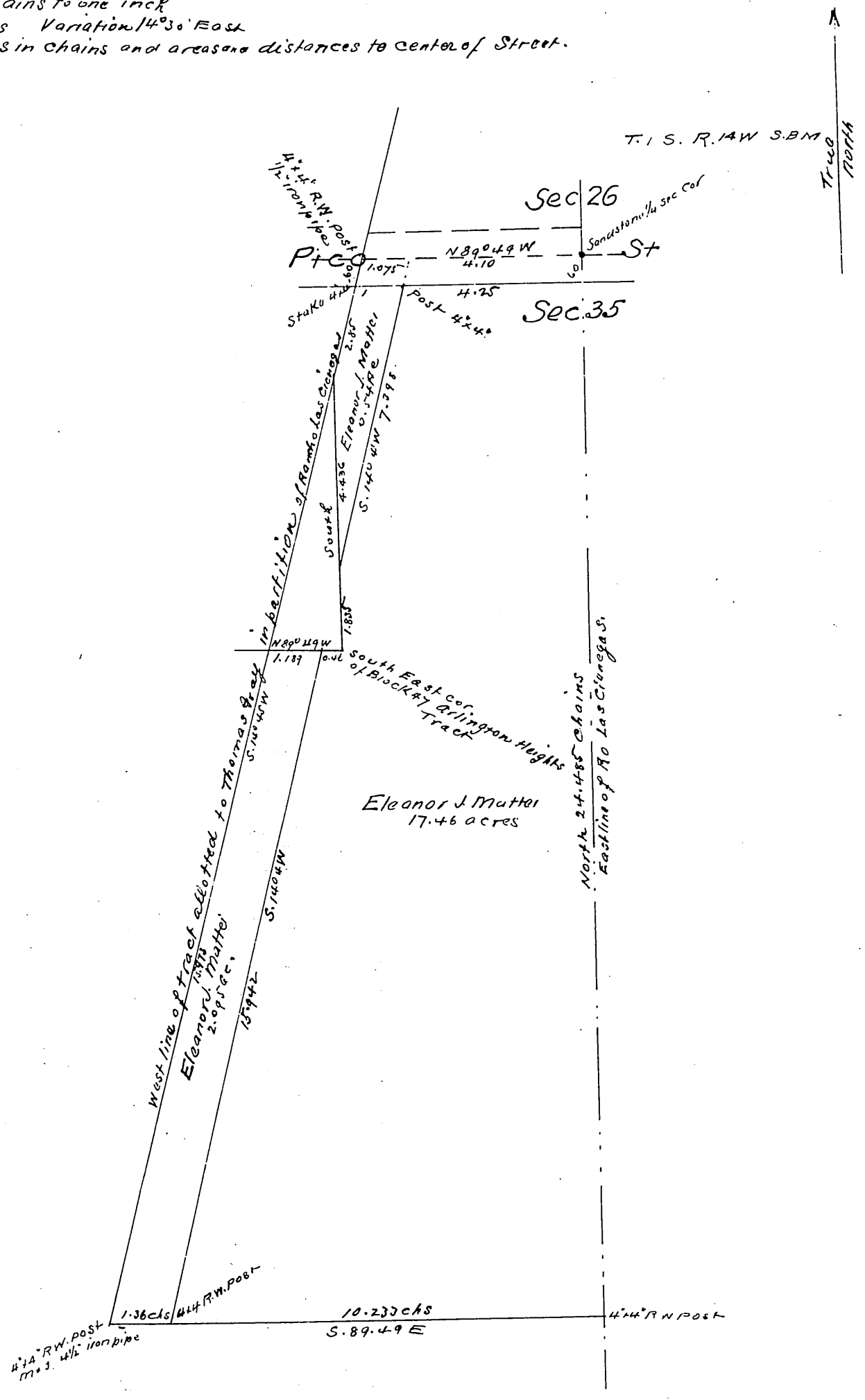


# Plat of a portion of the Rancho Las Cienegas, Los Angeles County California

Surveyed at the request of  
**Eleanor J. Mattei**  
by V. J. Rowan Surveyor  
April 1894

Scale 3 chains to one inch  
True Courses Variation 14° 30' East  
All distances in chains and areas are distances to center of Street.



Owner  
**Eleanor J. Mattei**

A full true and correct copy of the original recorded May  
21. 1894 at 13 min past 3 p.m at request of C. K. Holloway  
Arthur Bray Co Recorder  
by W. W. Mills. Depy.