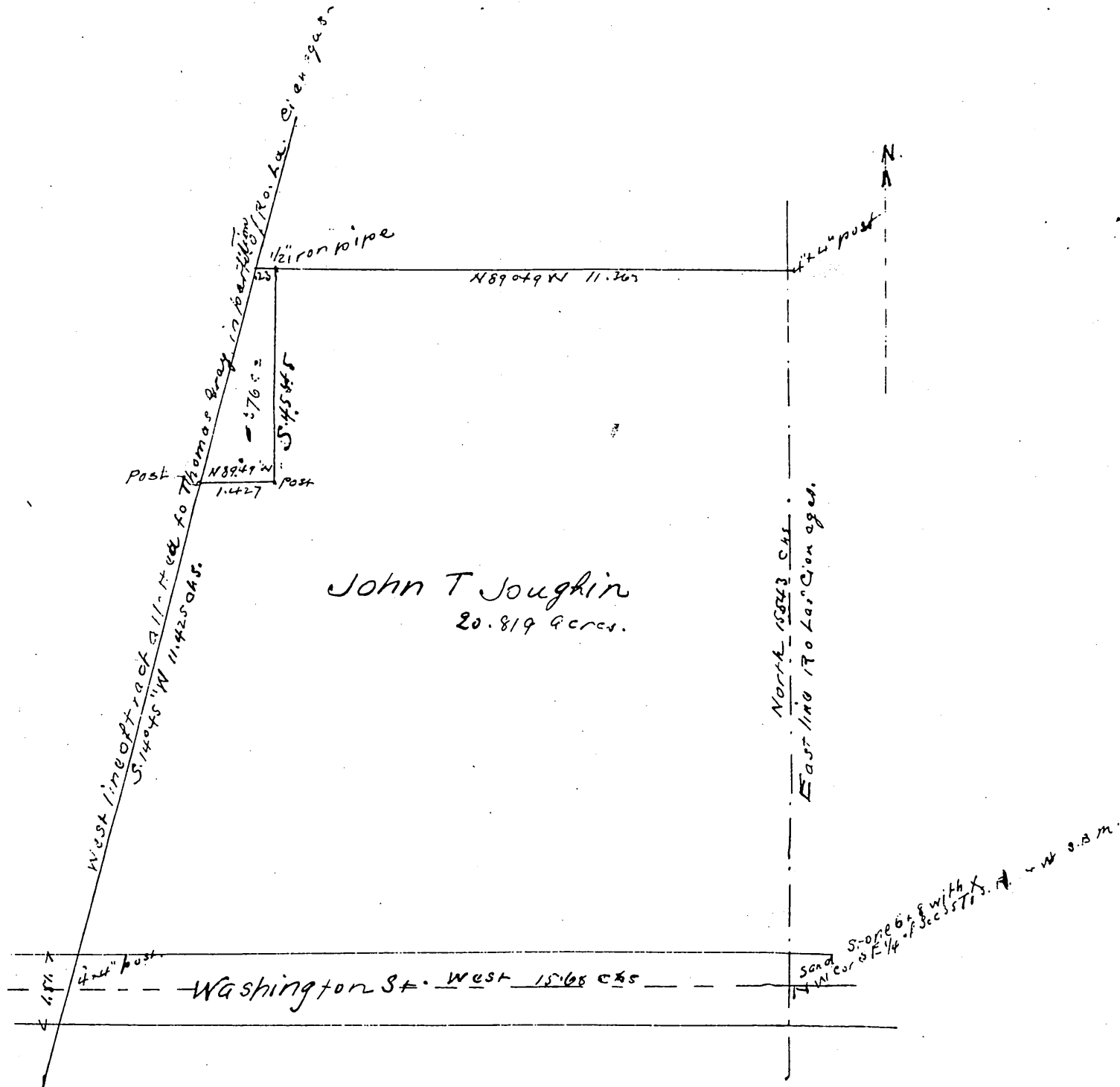


Plat  
of a portion of the  
Rancho Las Cienegas  
surveyed at the request of  
John T. Joughin Esq.  
April 1894  
By V. J. Rowan Surveyor

Scale 3 chains to one inch.  
True Courses Variation 14°30' East  
All distances in chains and to center of street.



John T Joughin  
20.819 Acres.

Owner  
John T. Joughin

A full true and correct copy of the Original  
recorded Jun 13 1894 at 4 + min past 2 pm at request  
of John T. Joughin

Arthur Gray Co Recorder  
by W. W. Miller Deputy