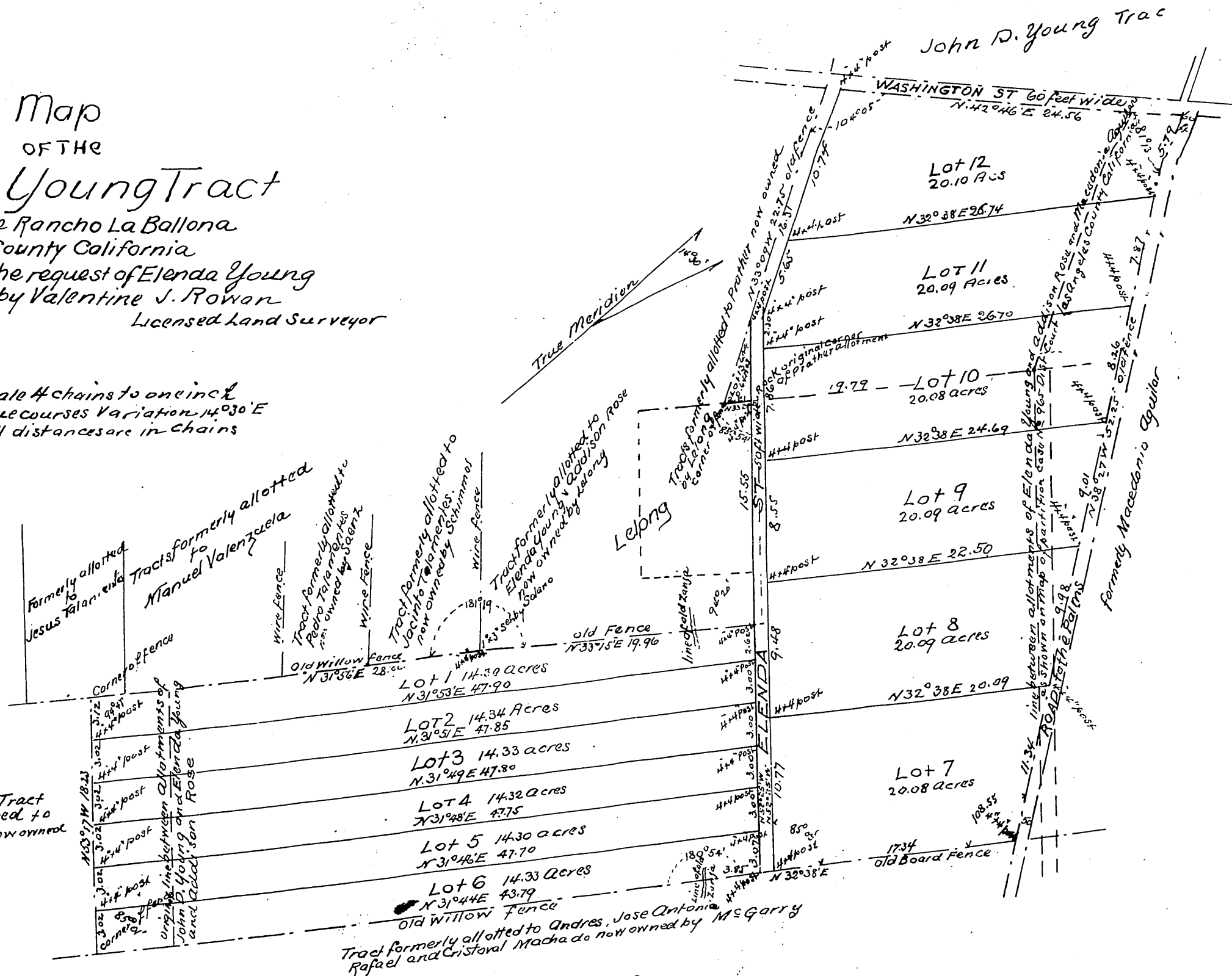


# Map OF THE Elenda Young Tract

situated in the Rancho La Ballona  
 Los Angeles County California  
 Surveyed at the request of Elenda Young  
 in June 1894 by Valentine J. Rowan  
 Licensed Land Surveyor

Scale 4 chains to one inch  
 True courses Variation 14°30'E  
 All distances are in chains

portion of Tract  
 formerly allotted to  
 John D. Young now owned  
 by M. E. Bonald



Owner Elenda Young.

A full true and correct copy of original  
 recorded Jul. 7 1894 at 52 min past 12 m  
 (scale reduced to 8 chains to one inch) at  
 request of Elenda Young.

Arthur Gray Co Recorder.  
 by W. W. Mills Deputy