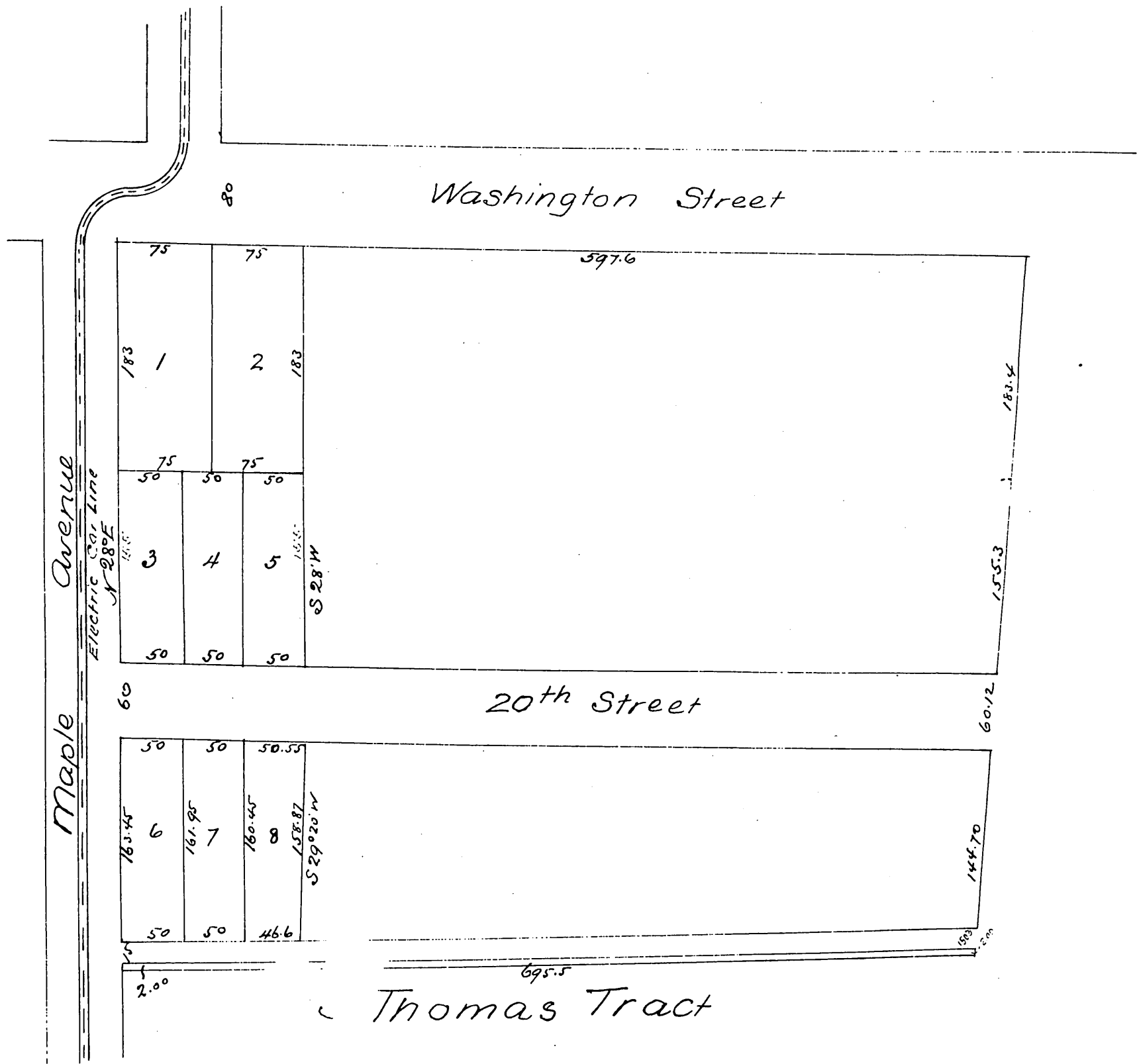


# Plot of Niles Home Tract

Los Angeles City  
Calif

Scale 1 in. = 50 ft



A full true and correct copy of original (scale reduced to 100 feet to one inch) recorded Aug 6 1894 at 17 min past 3 p m at request of N. S. Niles

Arthur Bray Co Recorder  
by W. W. Mills Deputy