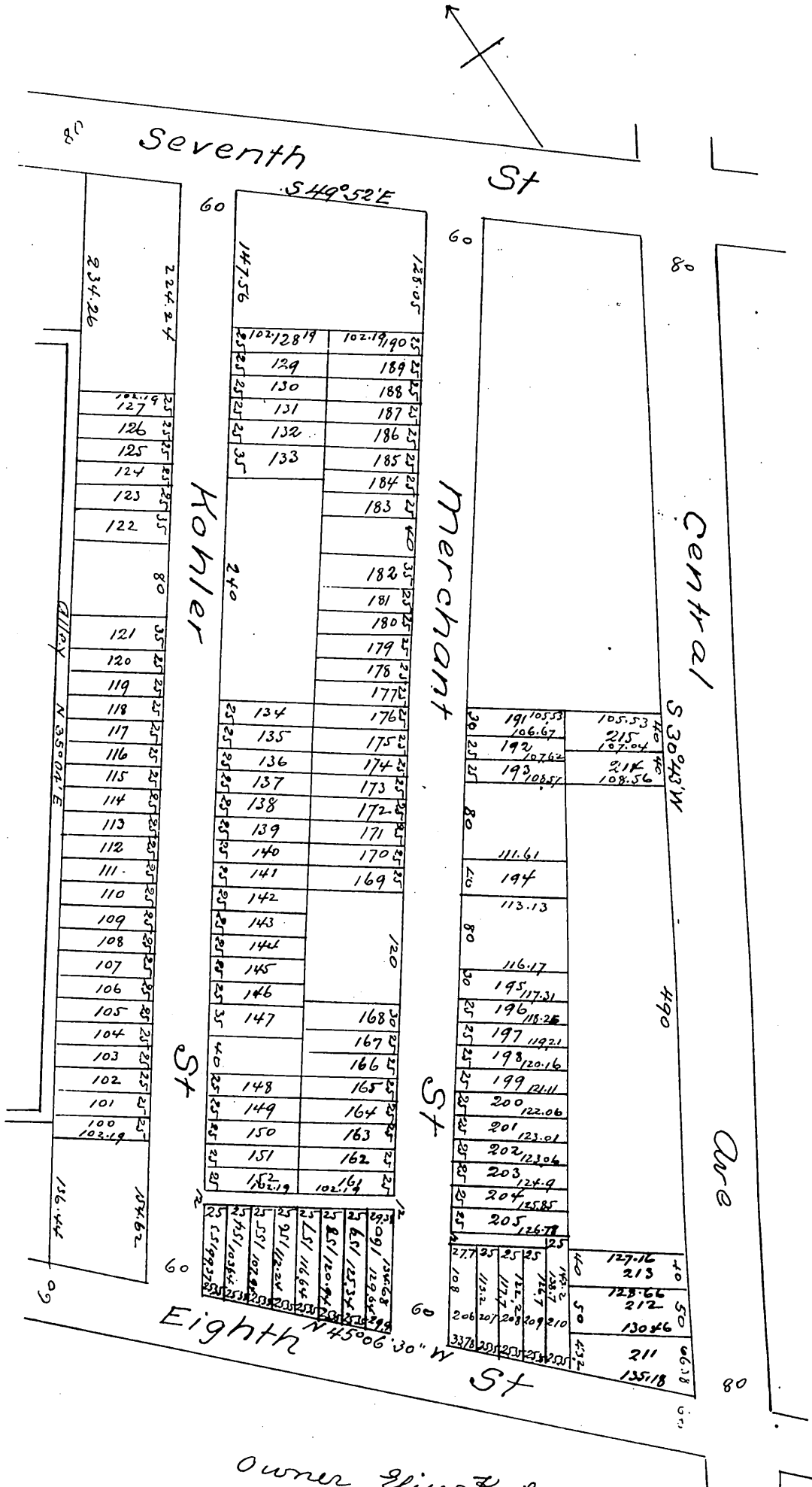


Kohler Tract

Being W.J. Fisher's Re-Subdivision of a portion of the Kohler and Frohling Tract Los Angeles City Calif

Surveyed by E.G. Jones in July 1894
Scale 1 in = 100 ft



Owner Elise Kohler, W.J. Fisher

A full true and correct copy of original (scale reduced to 150 ft to one inch) recorded Aug 9th 1894 at 36 min past 3 p.m. at request of T. I. & T. Co
Arthur Bray Co., Recorder
by W.W. Mills Deputy