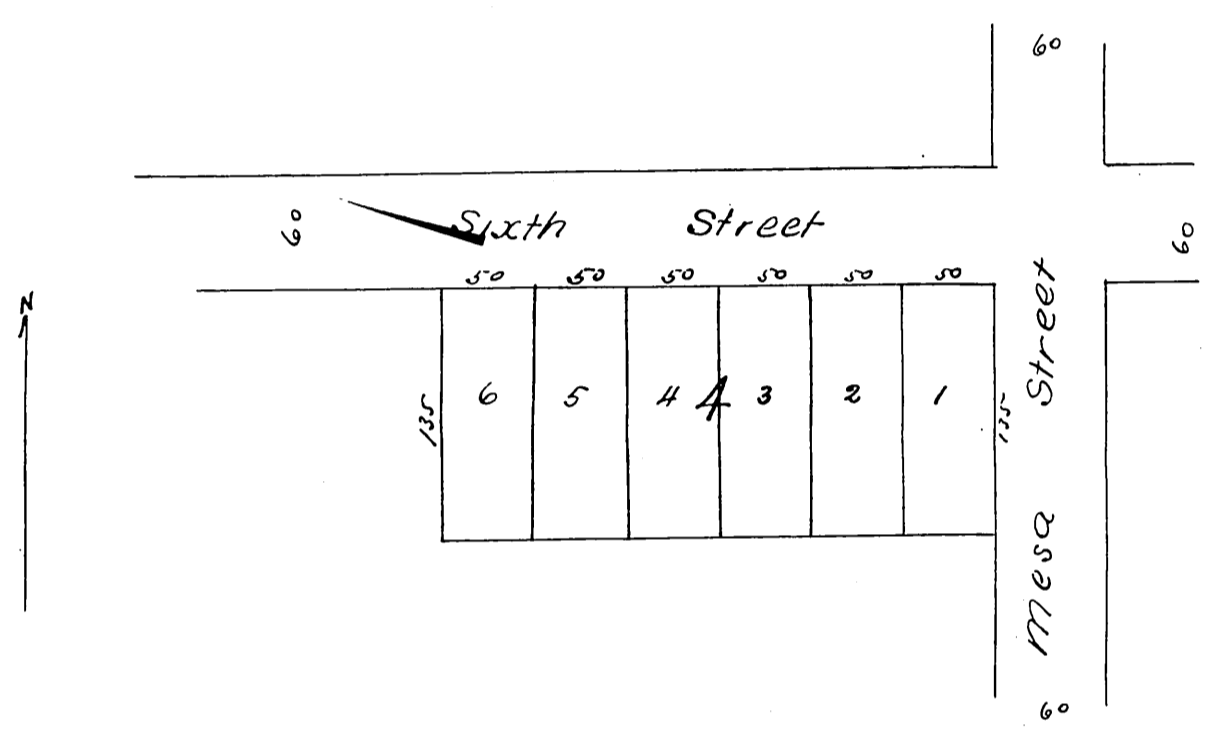


Plat
 OF
 M.E. Sepulvedas Subdivision
 of Lot 4 Block 7
 City of San Pedro
 Healey's Survey

Scale 100ft to 1 inch



Owner M. E. R. Sepulveda

A full true and correct copy of original
 recorded Sept 1. 1894 at 1 min past 9 a.m at
 request of M. E. Sepulveda

Arthur Bray Co Recorder
 by W. W. Mills Deputy