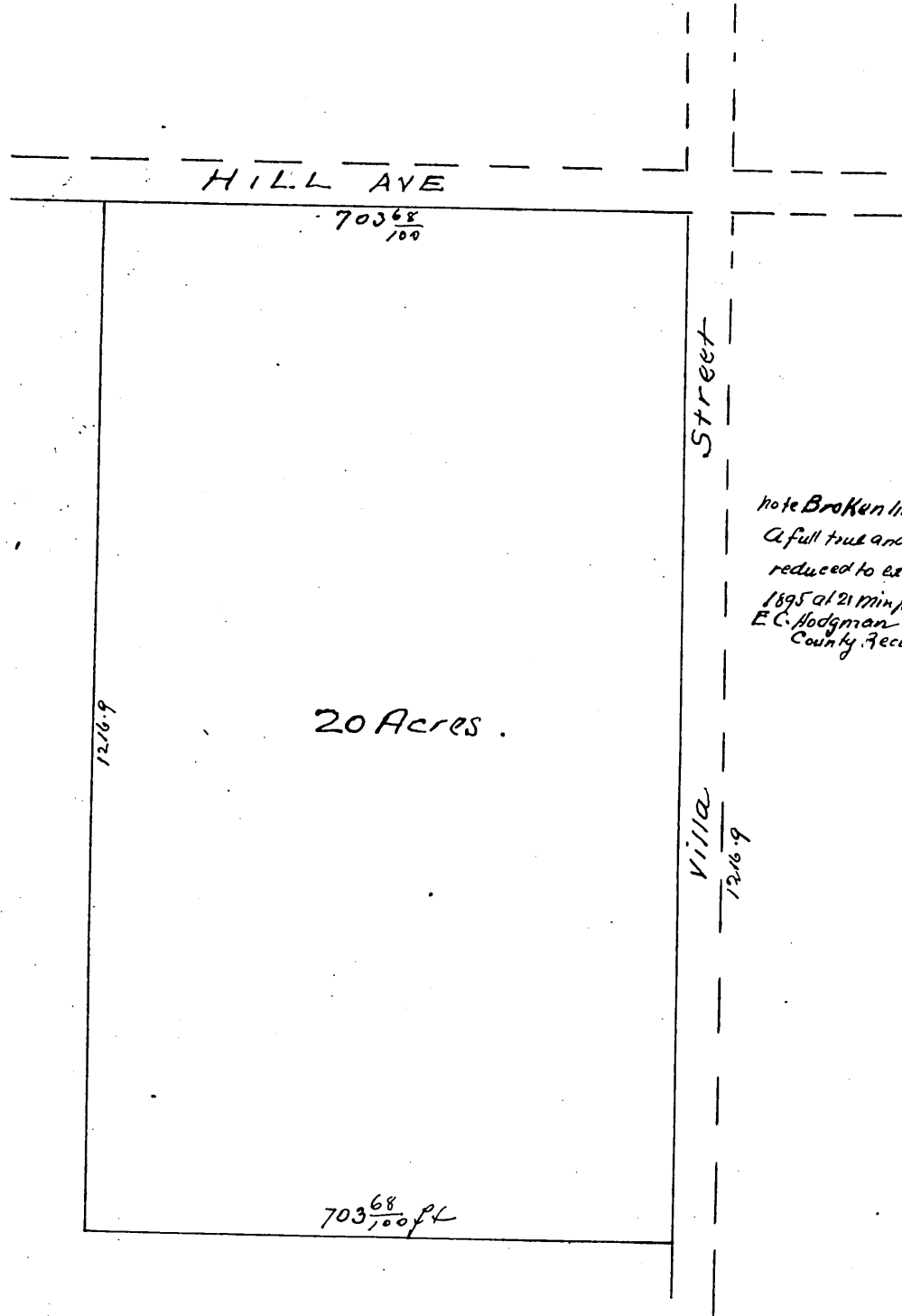


map of
C.W. Stone's Subdivision of Lots 2+3

Linden Place

as recorded in Book 5 page 404 Miscellaneous Records
Los Angeles Co Cal.



Note Broken lines are those shown in pencil on original)
 A full true and correct copy of the original (Scale
 reduced to exact one half size) recorded B626
 1895 at 21 Min past 11 O'Clock at request of S.M. Simpson &
 E.C. Hodgman
 County Recorder by E. J. Wright
 County Surveyor &
 Ex officio Deputy County Recorder

Owner: S. N. Sanford.