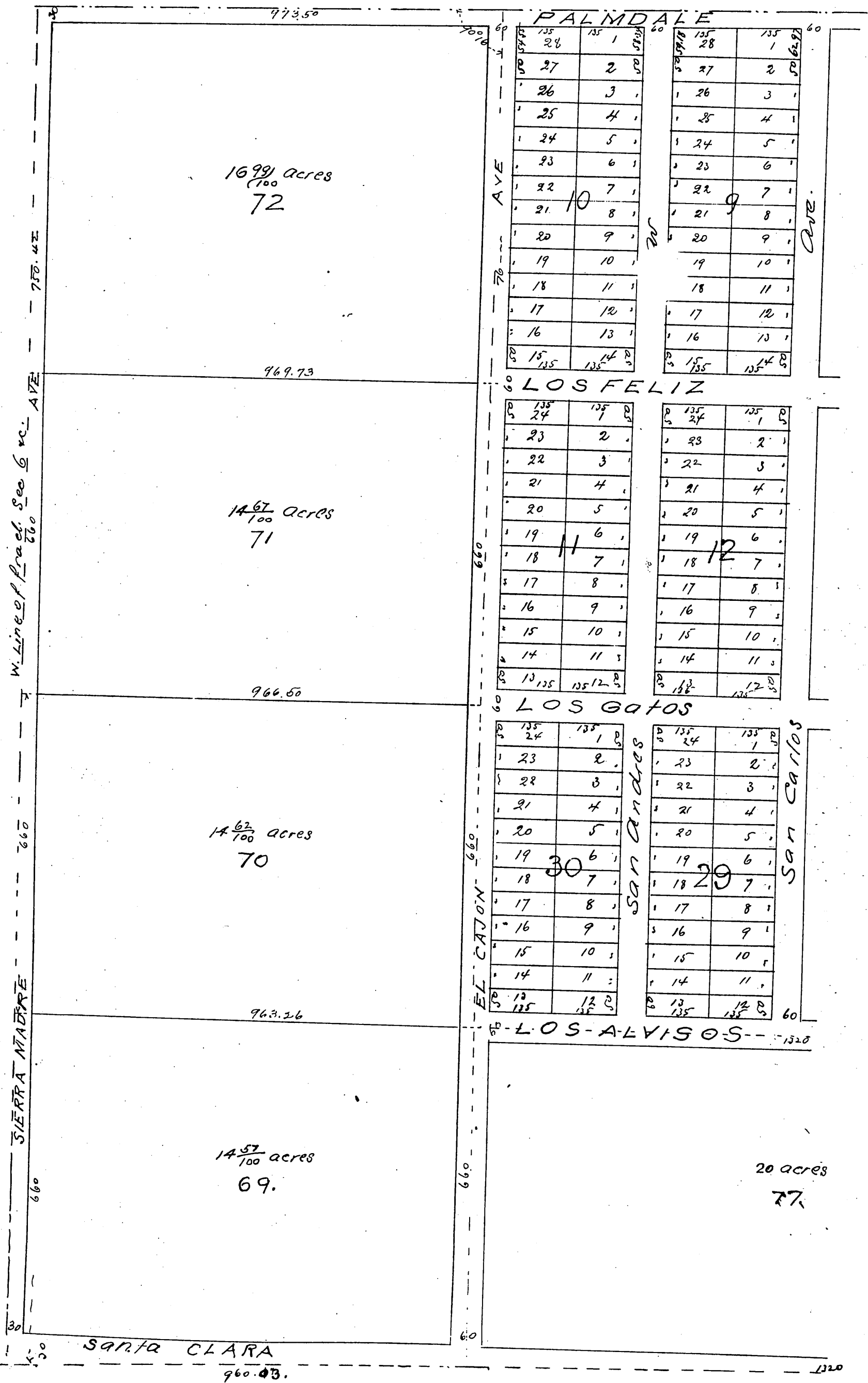


Town
of
Tierra Bonita
Los Angeles County
California

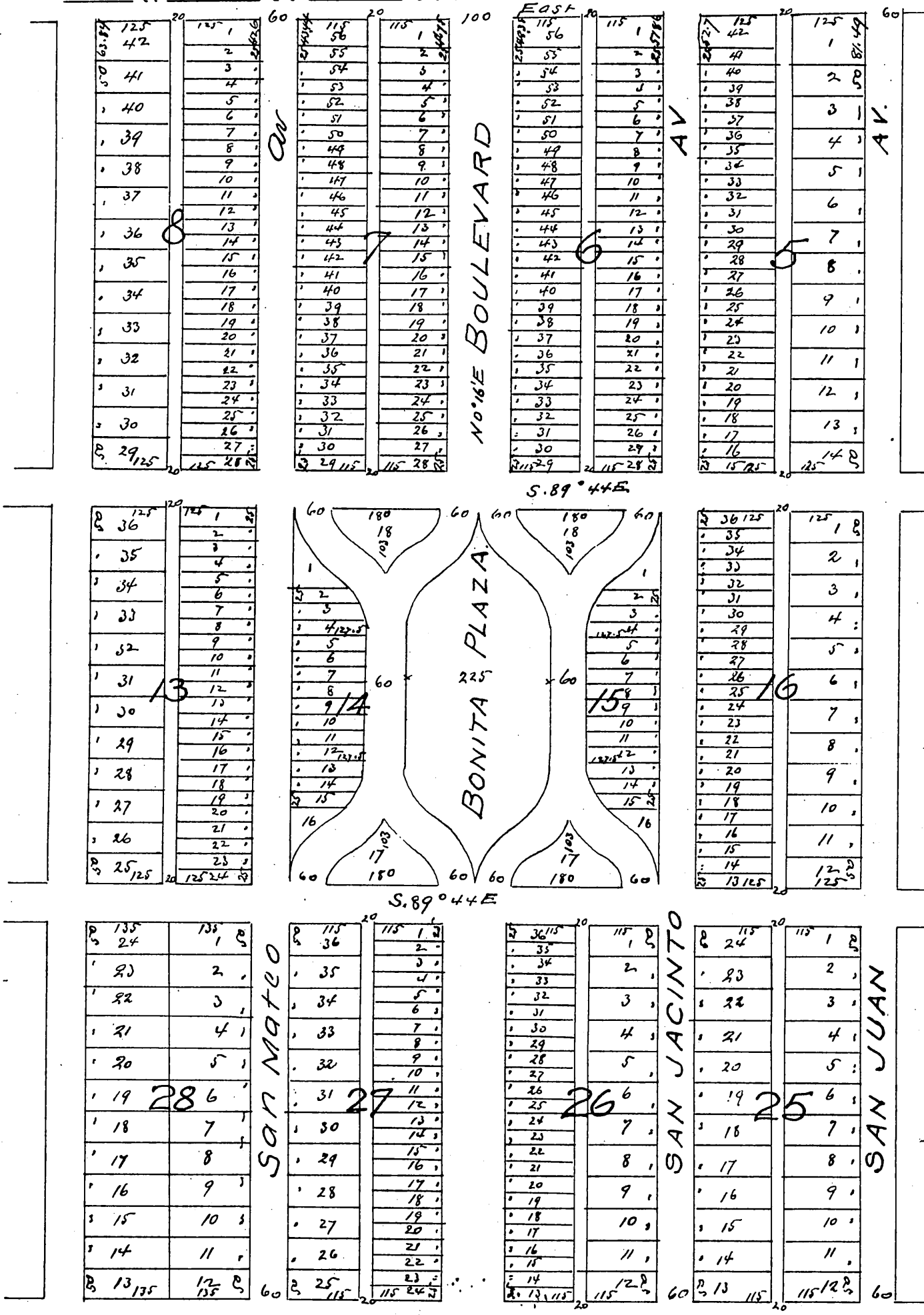




Owners

Truman G. Palmer
Elias C. Chapin

North line of Section 6 T5N. R. 10W of San Bernardino Meridian



20 acs
82

BONITA



BOULEVARD 660

TOWN OF LITTLE ROCK

11 9/100 acres
90

Avenue 870.48

Ave 819.72

ST 60

660

10 acres
89

NORTH 15.16 W

660

ST 60

10 acres
88

SAN PABLO

ST 60

20 ACRES
87

MOJAVE
East line of sec 6 T. 5. N. R. 10. W. OF San Bernardino Meridian

135	135	135	135
24	1	24	1
23	2	23	2
22	3	22	3
21	4	21	4
20	5	20	5
19	6	19	6
18	7	18	7
17	8	17	8
16	9	16	9
15	10	15	10
14	11	14	11
13	12	13	12

135	135	135	135
24	1	24	1
23	2	23	2
22	3	22	3
21	4	21	4
20	5	20	5
19	6	19	6
18	7	18	7
17	8	17	8
16	9	16	9
15	10	15	10
14	11	14	11
13	12	13	12

Surveyed Oct. 1894
Burt Cole Civil Engineer

A full true and correct copy of original recorded Nov. 10. 1894 at 50 min past 4 p.m. at request of Palmer and Chapin Arthur Braylee Rec by W.W. Mills Deputy 54