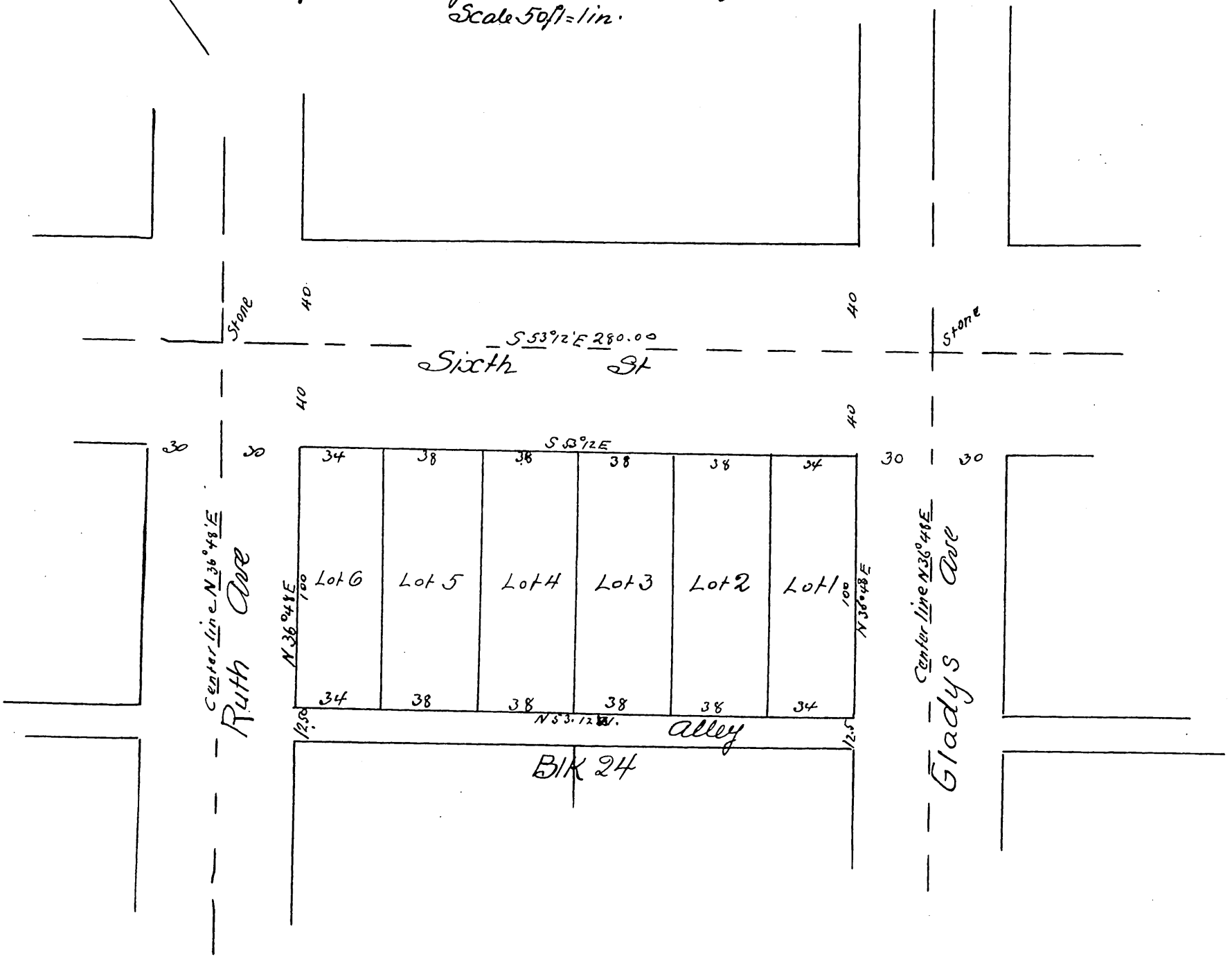


Plat
of
H.C. Halfpennys Resubdivision
of a part of Block 24 of the Wolfskill Orchard Tract
in the
City of Los Angeles California
Resubdivided by J. H. Dockweiler & G. B. King in Feb 1895
Scale 50ft = 1 in.



owner
H.C. Halfpenny.

A full true and correct copy of original
recorded Feb. 28 - 1895 at 25 min past 3 p.m. at
request of H.C. Halfpenny.
E.C. Hodgman Co. Recorder by E.T. Wright County Surveyor
to Ex officio Deputy Co. Rec.