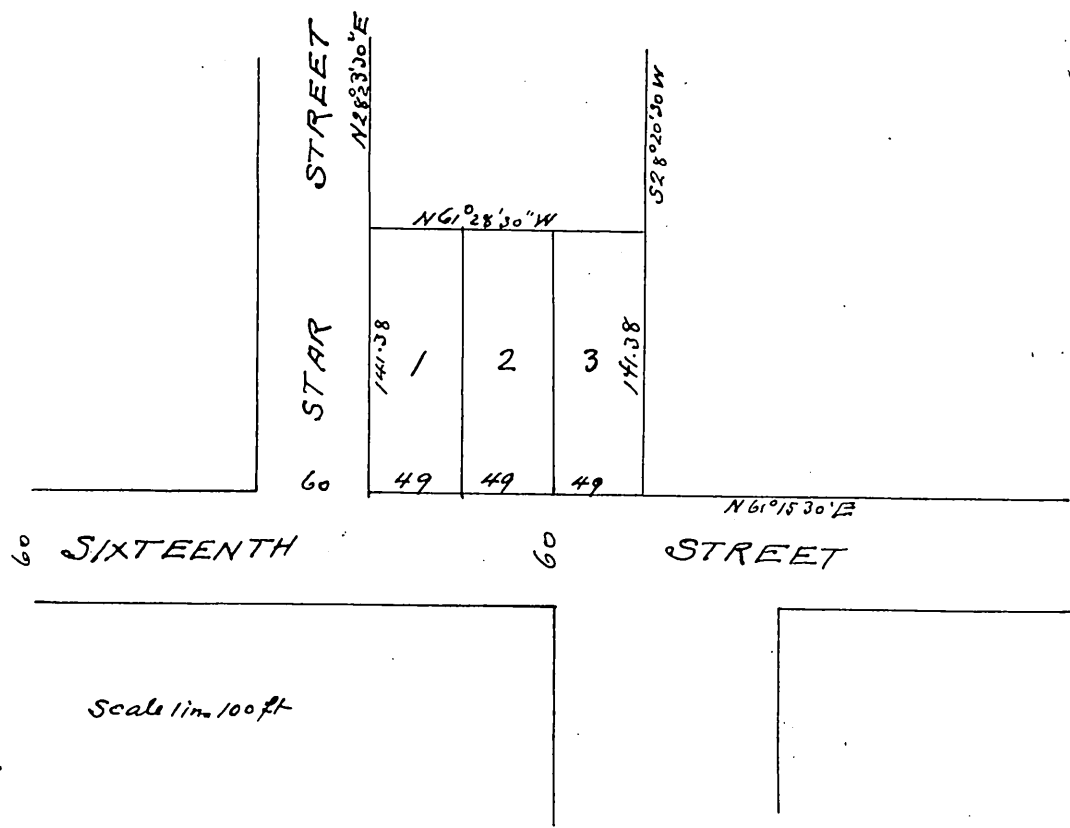




map of  
 Palmers Resubdivision  
 of Lots 22, 23 and 24 Star Tract as per Map of same  
 recorded in Book 13 Page 60 Miscellaneous Re-  
 cords of Los Angeles County.



owner  
 S. R. Palmer.

a full true and correct copy of the original recorded Feb 28 1895 at 29 Min past 3 P.M.  
 at request of S. R. Palmer  
 E. C. Hodgman County Recorder by  
 E. T. Wright Co. Surveyor +  
 Ex Officio Deputy Co. Recorder