

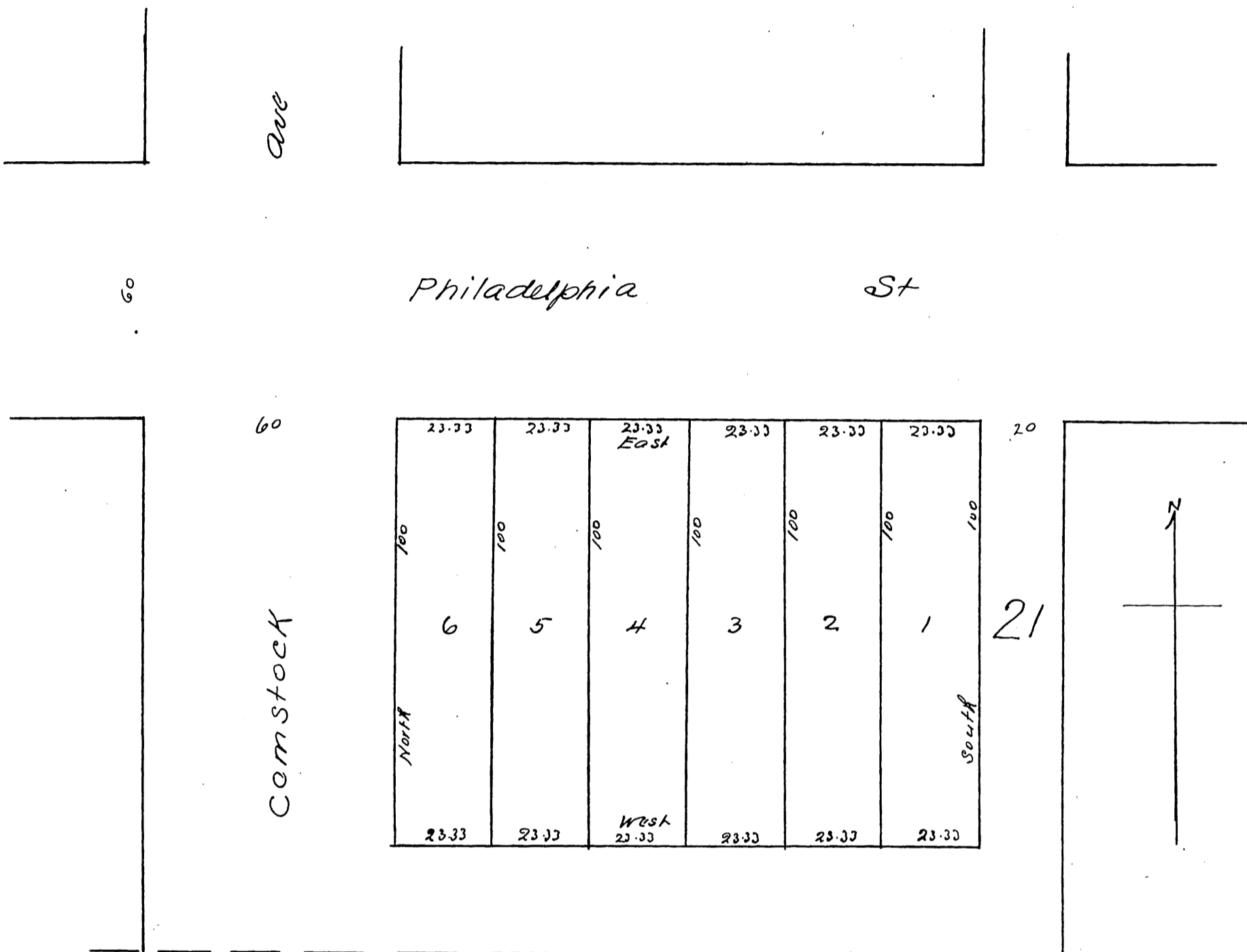
# Nichols Subdivision

## Whittier

Being a Subdivision of Lots 23 + 24 Blk 21 of the  
Pickering Land & Water Company's Subd of the

### John M. Thomas Ranch

Los Angeles County Cal  
Surveyed Nov 1887 by Jessup Reece & Clappitt  
Scale 1 in = 30 ft



Courses and distances on all lines

owner J. B. Nichols.

A full true and correct copy of original recorded  
March 20 1895 at 52 min past 2 p.m. at request of J. B. Nichols  
E. C. Hodgman Co Recorder by E. T. Wright Co. Surveyor  
& ex officio Dep. Co Recorder