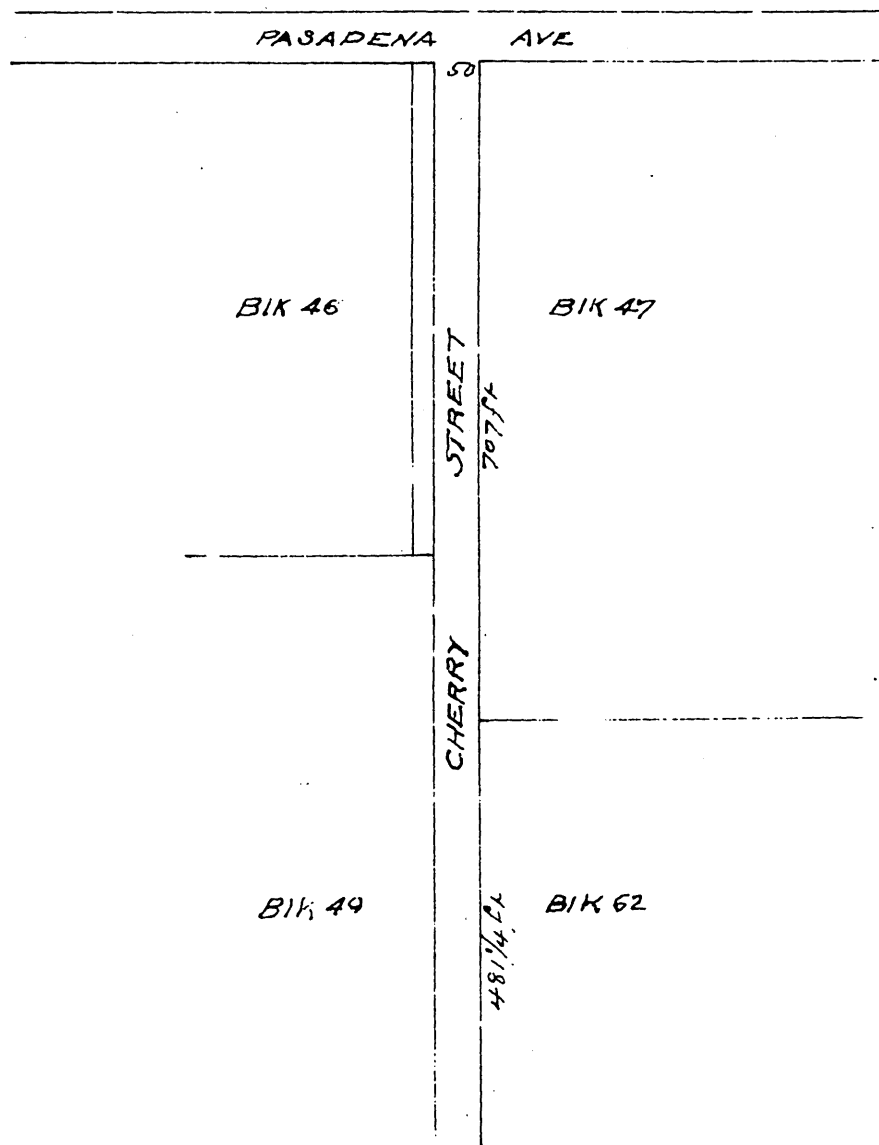


Map of part of Highland Park tract showing property affected by Cherry Street as abandoned by Resolution of the Board of Supervisors Sep. 26 1893 see map of said Tract recorded in Book 6 Page 392+393



A full true and correct copy of the original recorded April 11 1895 at request of I. H. Preston E. C. Hodgman Co Recorder by E. T. Wright Co. Surveyor and ex officio Dep. Co. Recorder