

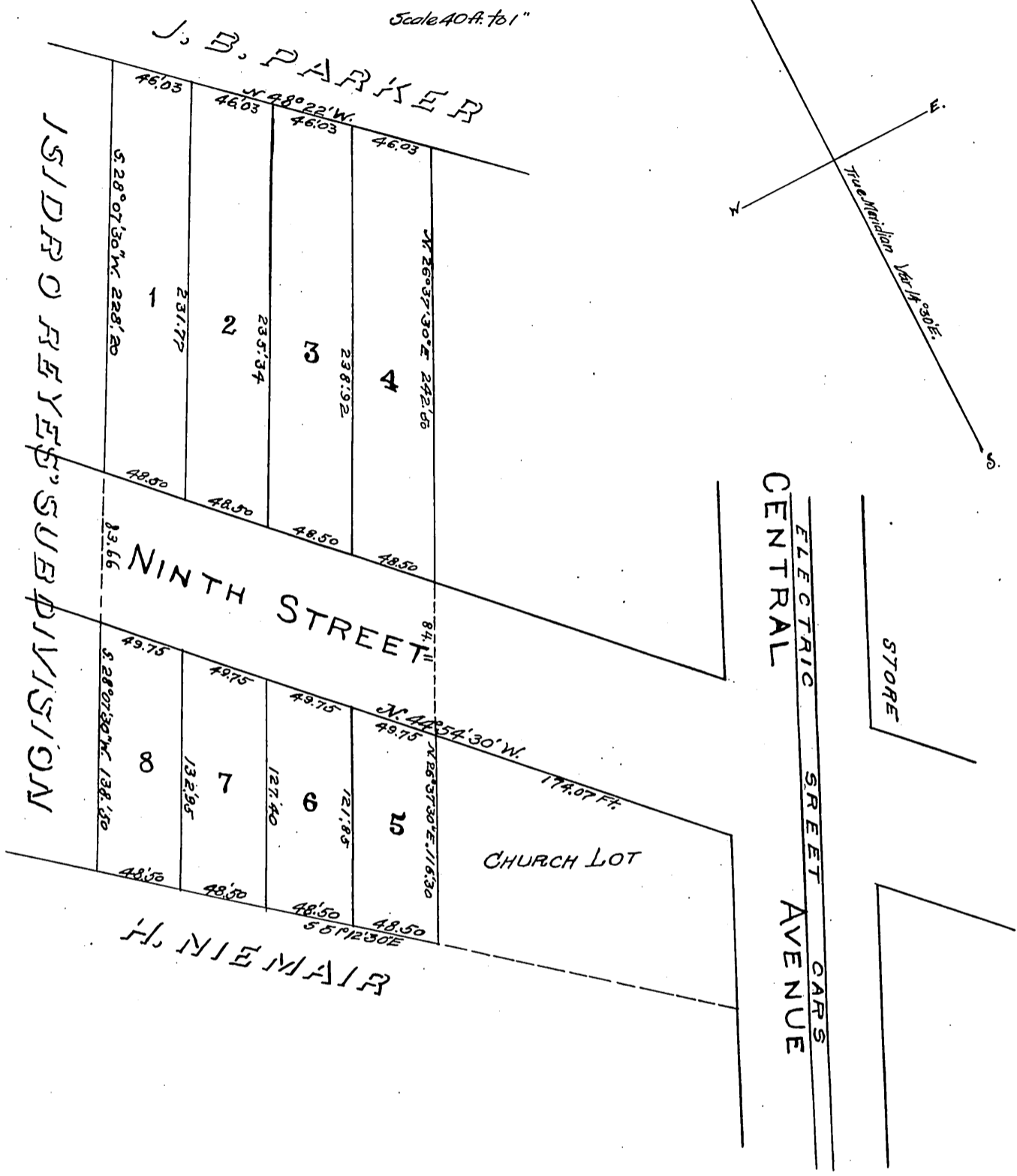
5511

Map OF CORBIN'S SUBDIVISION OF THE SANTA CRUZ TRACT

BEING PART OF THE REYES TRACT
IN THE CITY OF LOS ANGELES
CAL

Surveyed by G.M.D. Fisher
1894

Scale 40 ft. to 1"



OWNER.

J. S. Corbin

Reduced 1/2 size.

Recorded Jan. 8, 1895 at request of J. S. Corbin.

*Copy
Owner*