

5514

Map OF THE WRIGHT & LYNCH TRACT

Being a part of.
LOT 2 BLOCK 37 HANCOCK'S SURVEY.

of the 35 acre tract

IN THE

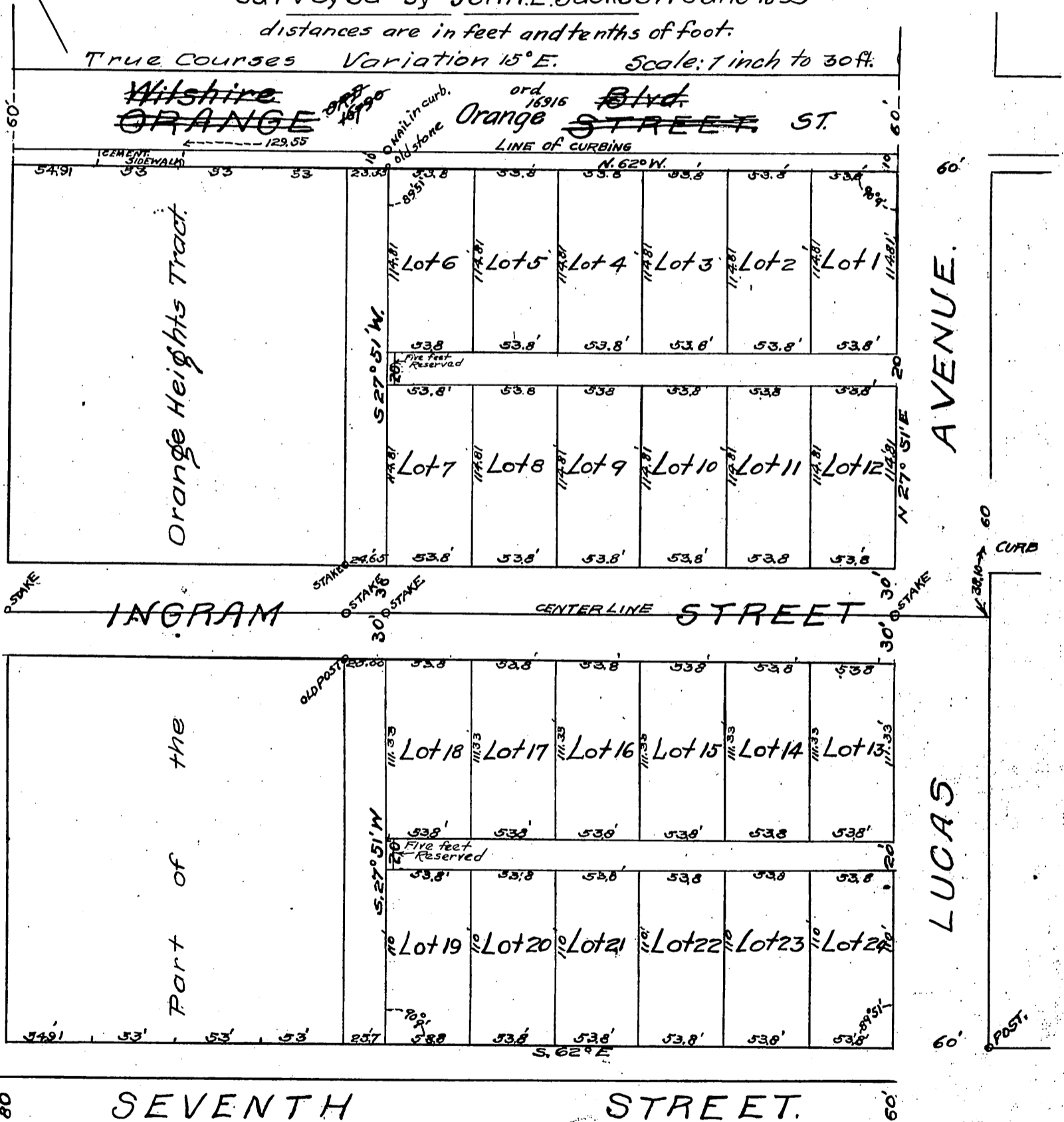
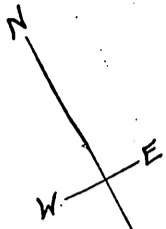
City of Los Angeles. State of California

Reference to a deed from John G. Nichols to Charles M. Wright, recorded in Book 34 page 455 of Deeds, the Records of Los Angeles County

surveyed by John E. Jackson June 1893

distances are in feet and tenths of foot.

True Courses Variation 15° E. Scale: 1 inch to 30 ft.



Vac. of alley - ord 33107
ord 5347

Recorded at request of C. M. Wright Jan 21, 1895
(Scale reduced from 30 feet to 1 inch to the inch)