

WHITCOMBS SUBDIVISION

of North 80 acres of

GLENDORA TRACT

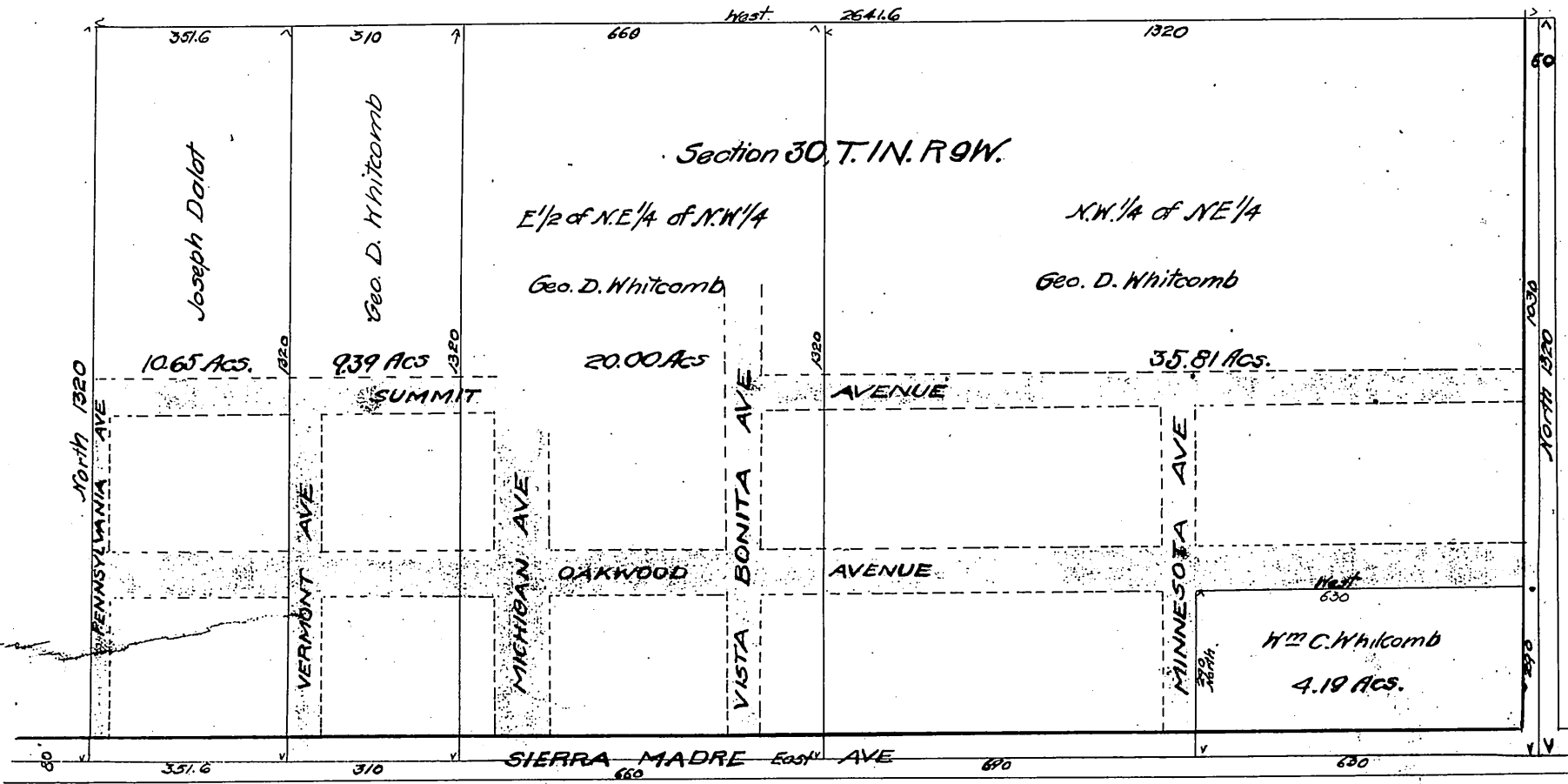
LOS ANGELES CO. CALA.

Showing vacation of Streets by Supervisors

March 21, 1895

Scale 1" to 300 ft.

NOTE: Streets as vacated colored



Recorded Apr. 23 1895, at 44 Min, past 1 P.M. at request of C.S. Whitcomb

Comptd
C.H.E.